

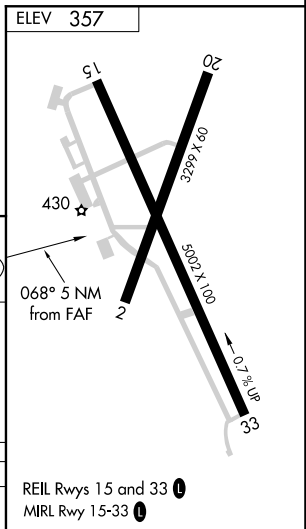
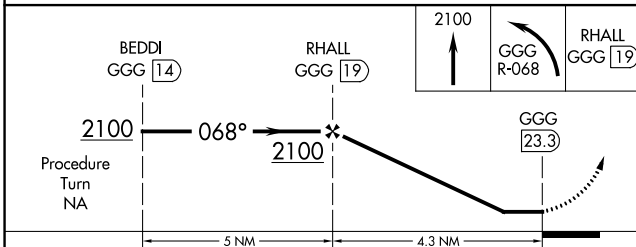
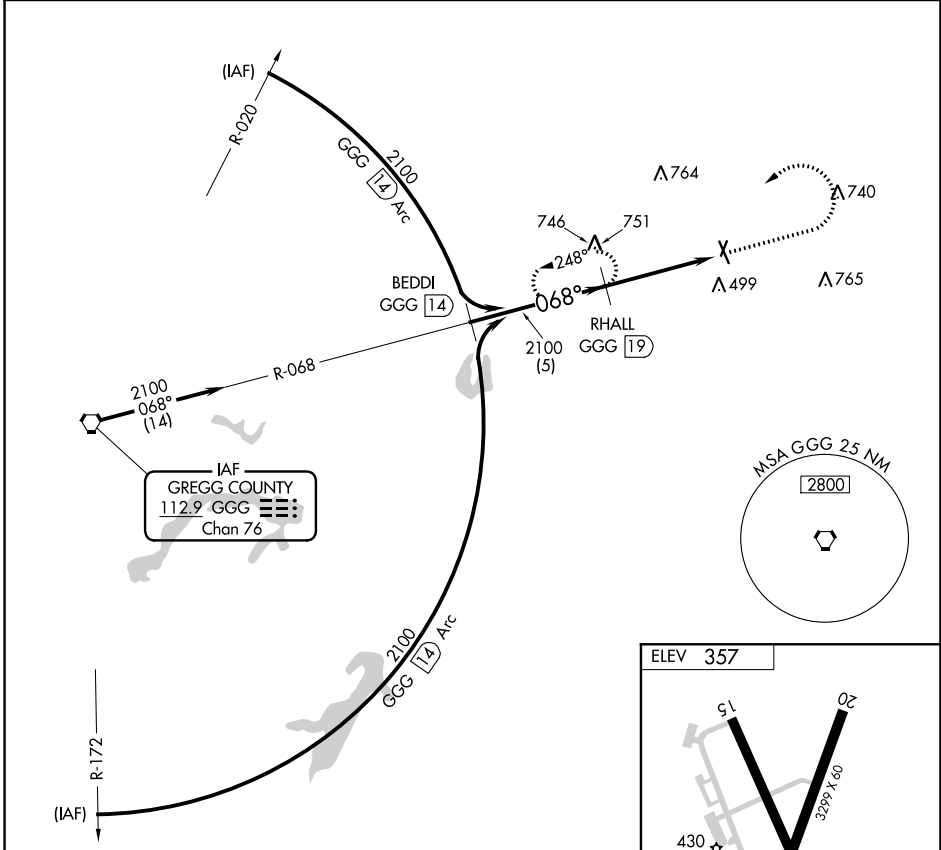
VORTAC GGG 112.9 Chan 76	APP CRS 068°	Rwy Idg TDZE Apt Elev	N/A N/A 357
--	------------------------	-----------------------------	--

VOR/DME-A
HARRISON COUNTY (ASL)

⚠ When local altimeter setting not received, use Longview altimeter setting and increase all MDA 60 feet; increase Cat B visibility to 1½. Night Landing: Rwy 2, 15, 20 NA. Helicopter visibility reduction below 1 SM NA.

⚠ MISSED APPROACH: Climb to 2100 then left turn via GGG R-068 to RHALL/GGG 19 DME and hold.

AWOS-3 118.675	SHREVEPORT APP CON 119.9 335.55	UNICOM 122.8 (CTAF) 📻
--------------------------	---	--



CATEGORY	A	B	C	D
CIRCLING	1300-1¼	943 (1000-1¼)	NA	

SC-2, 09 SEP 2021 to 07 OCT 2021

SC-2, 09 SEP 2021 to 07 OCT 2021