

WAAS CH 53512 W10A	APP CRS 104°	Rwy Idg TDZE Apt Elev	4001 1057 1074
--	------------------------	-----------------------------	---

RNAV (GPS) Z RWY 10

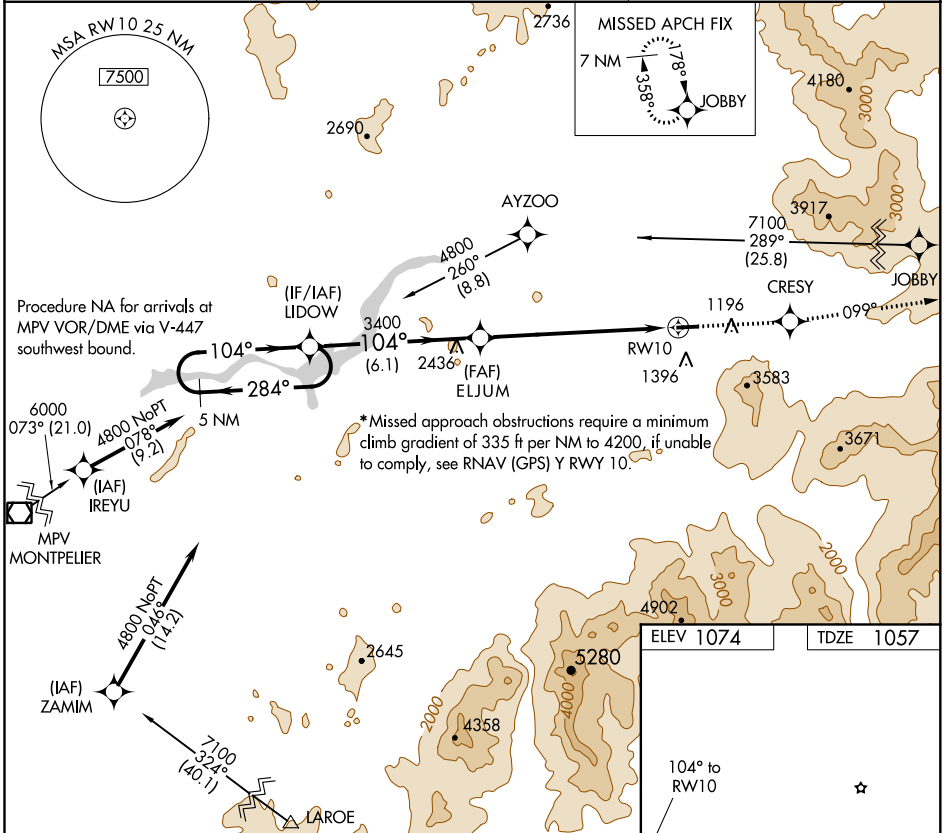
MOUNT WASHINGTON RGNL (HIE)

⚠ DME/DME RNP-0.3 NA. Visibility reduction by helicopters NA. When local altimeter setting not received, use Lyndonville altimeter setting and increase DA 71 feet and LPV all Cats visibility ½ mile.

⚠ MISSED APPROACH: Climb to 7100 direct CRESY and via track 099° to JOBBY and hold, continue climb-in-hold to 7100.

❄ -29°C

ASOS 118.525	BOSTON CENTER 135.7 282.2	UNICOM 122.8 (CTAF) 0
------------------------	-------------------------------------	---------------------------------



VGSi and RNAV glidepath not coincident (VGSi Angle 3.50/TCH 45).			
5 NM Holding Pattern	7100 CRESY	Ir 099°	JOBBY
4800 ← 284°	↑	↖	↖
→ 104°			
GP 3.00°			
TCH 45			
	ELJUM 3400		RWY 10
	← 6.1 NM	← 7.1 NM	
CATEGORY	A	B	C
*LPV DA	1507-1½ 450 (500-1½)		
	NA		

ELEV 1074	TDZE 1057
-----------	-----------

104° to RWY 10

0.6% UP →

4001 X 75

REIL Rwy 10 and 28 0

MIRL Rwy 10-28 0

NE-1, 09 SEP 2021 to 07 OCT 2021

NE-1, 09 SEP 2021 to 07 OCT 2021