


WAAS CH 42819 W23A	APP CRS 234°	Rwy Idg TDZE Apt Elev	5997 29 31
----------------------------------------	------------------------	-----------------------------	---------------------------------------

RNAV (GPS) RWY 23

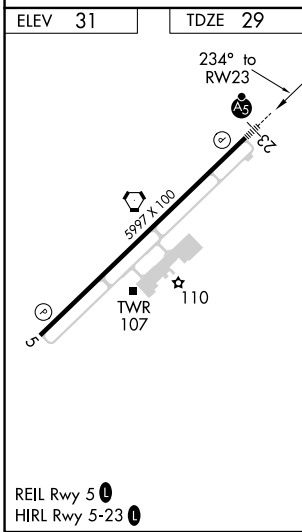
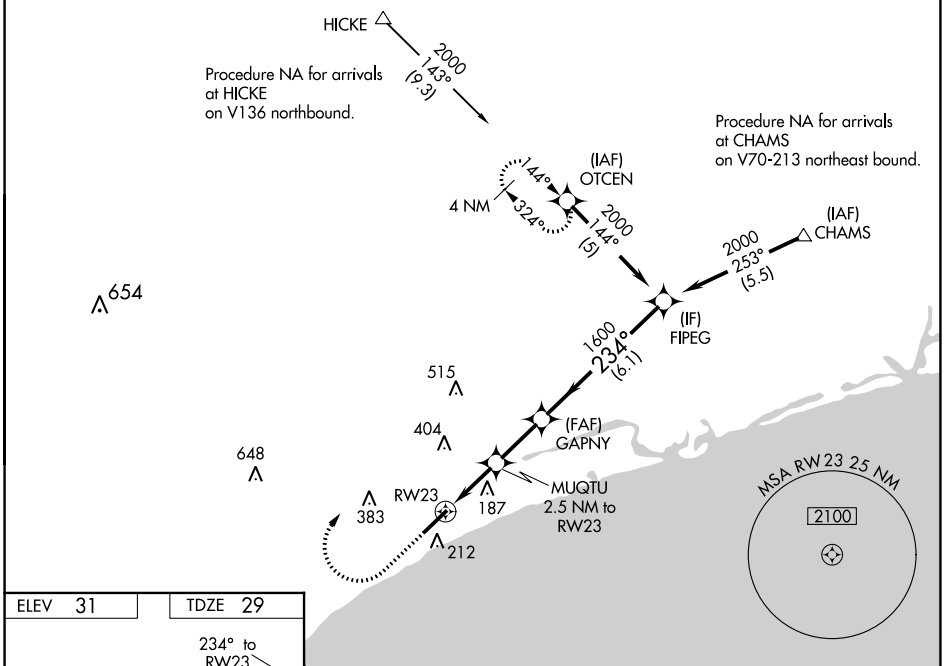
GRAND STRAND (CRE)

⚠ For uncompensated Baro-VNAV systems, LNAV/VNAV NA below -7°C (20°F) or above 54°C (130°F). DME/DME RNP-0.3 NA. VDP and Baro-VNAV NA with Myrtle Beach Intl altimeter setting. When local altimeter setting not received use Myrtle Beach Intl altimeter setting and increase all DA 31 feet and all MDA 40 feet; increase LNAV/VNAV all Cats and LNAV Cat C and D visibility 1/8 mile. For inop MALSRL when using Myrtle Beach Intl altimeter setting, increase LNAV Cats C and D visibility to 1/8.

MALSRL 

MISSED APPROACH:
Climb to 1000 then climbing right turn to 2000 direct OTCEN and hold.

ATIS 119.625	MYRTLE BEACH APP CON* 119.2 350.3	STRAND TOWER* 124.6 (CTAF) 0 257.6	GND CON 121.8 257.6	CLNC DEL 121.8	UNICOM 122.95
------------------------	---------------------------------------------	----------------------------------------------	-------------------------------	--------------------------	-------------------------



ELEV 31	TDZE 29	1000		2000	OTCEN	FIPEG	
		*LNAV only.		MUGTU	1600	2000	
		*1.2 NM to RW23		2.5 NM to RW23			GP 3.00° TCH 55
		RW23		*880	1600		
		1.2 NM	1.3 NM	2.3 NM	6.1 NM		
CATEGORY	A	B	C	D			
LPV DA	229-1/2		200 (200-1/2)				
LNAV/VNAV DA	411-3/4		382 (400-3/4)				
LNAV MDA	480-1/2	451 (500-1/2)		480-7/8		451 (500-7/8)	
CIRCLING	520-1	489 (500-1)		720-2		720-2 1/4	
				689 (700-2)		689 (700-2 1/4)	

SE-2, 09 SEP 2021 to 07 OCT 2021

SE-2, 09 SEP 2021 to 07 OCT 2021