

VORTAC CRE <b>114.4</b> Chan <b>91</b>	APP CRS <b>238°</b>	Rwy Idg <b>5997</b> TDZE <b>29</b> Apt Elev <b>31</b>
--	------------------------	---

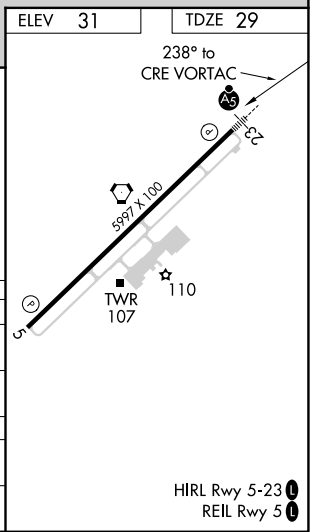
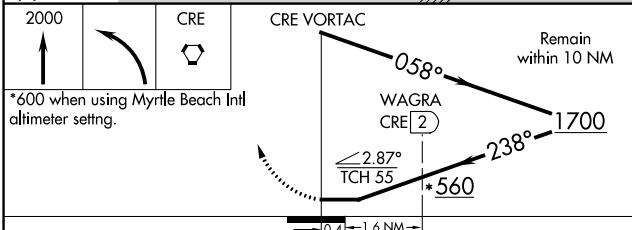
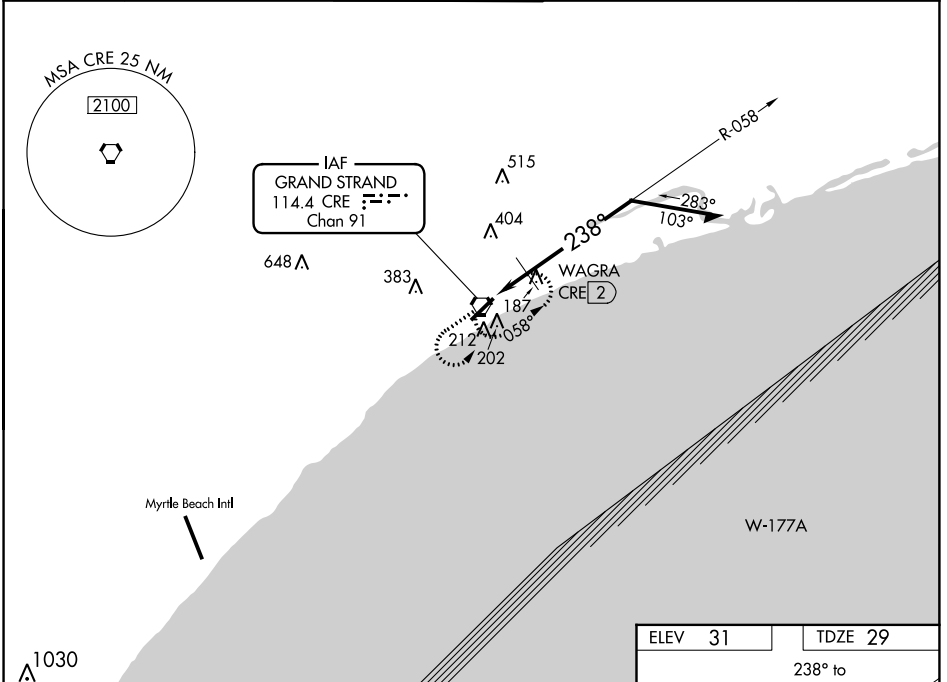
# VOR RWY 23

GRAND STRAND (CRE)

**⚠** For inoperative MALSR, increase S-23 and S-23 DME minimums Cats A and B visibility to 1 mile. Visibility reduction by helicopters NA. When local altimeter setting not received use Myrtle Beach Intl altimeter setting and increase all MDA 40 feet. For inoperative MALSR when using Myrtle Beach Intl altimeter setting, increase S-23 and S-23 DME minimums Cats A and B visibility to 1 mile.

**MALSR** MISSED APPROACH: Climb to 2000 then left turn direct CRE VORTAC and hold.

ATIS <b>119.625</b>	MYRTLE BEACH APP CON* <b>119.2 350.3</b>	STRAND TOWER* <b>124.6 (CTAF) 257.6</b>	GND CON <b>121.8 257.6</b>	CLNC DEL <b>121.8</b>	UNICOM <b>122.95</b>
------------------------	---	--	-------------------------------	--------------------------	-------------------------



CATEGORY	A	B	C	D
S-23	560-3/4	531 (600-3/4)	560-1 531 (600-1)	560-1 1/4 531 (600-1 1/4)
CIRCLING	560-1	529 (600-1)	720-2 689 (700-2)	720-2 1/4 689 (700-2 1/4)
WAGRA FIX MINIMUMS				
S-23	480-3/4	451 (500-3/4)	480-7/8 451 (500-7/8)	480-1 451 (500-1)
CIRCLING	520-1	489 (500-1)	720-2 689 (700-2)	720-2 1/4 689 (700-2 1/4)

SE-2, 09 SEP 2021 to 07 OCT 2021

SE-2, 09 SEP 2021 to 07 OCT 2021