


| | | | |
|--------------|-------------|----------|-------------|
| LOC I-HHR | APP CRS | Rwy Idg | 4193 |
| 109.1 | 253° | TDZE | 63 |
| | | Apt Elev | 66 |

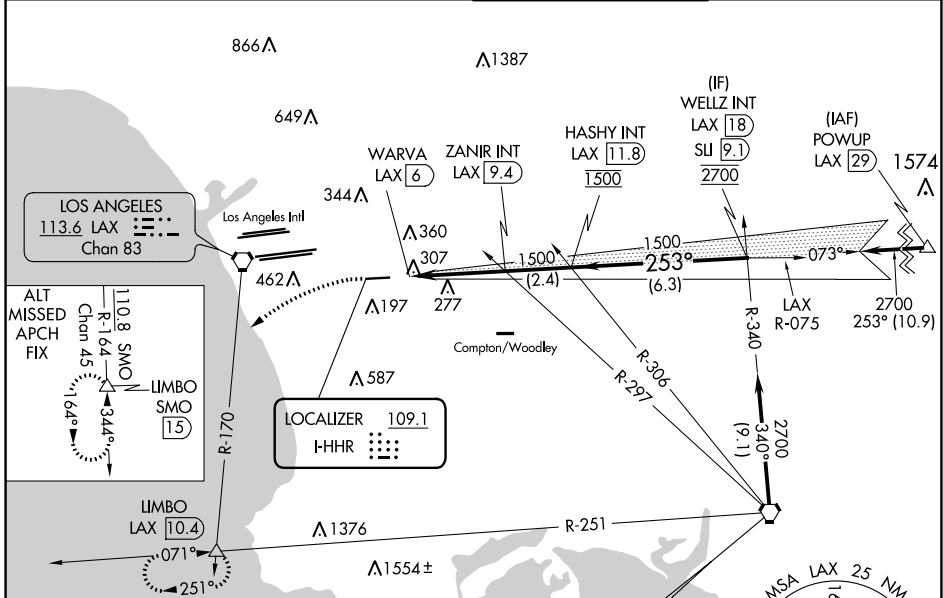
LOC RWY 25

JACK NORTHROP FLD/HAWTHORNE MUNI (HHR)

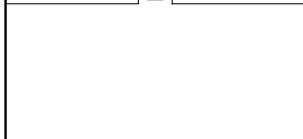
⚠ Inop table does not apply to Cat C. Rwy 25 helicopter visibility reduction below 3/4 SM NA. Circling NA when control tower closed. When local altimeter setting not received, use Los Angeles Intl altimeter setting. Simultaneous approach authorized with LAX 25L/R 24L/R. Circling NA north of Rwy 7-25. DME from LAX VORTAC. Simultaneous reception of I-HHR and LAX DME required. Procedure NA at night.

ODALS

MISSED APPROACH: Climbing left turn to 3000 on heading 210° and LAX VORTAC R-170 to LIMBO INT/LAX 10.4 DME and hold.

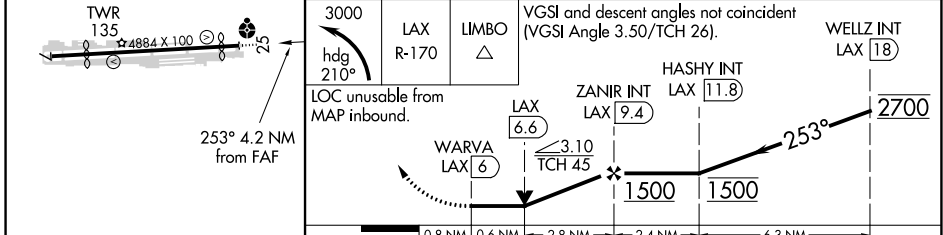
| | | | |
|----------------------|-------------------------------------|--|-------------------------|
| ATIS 118.4 | SOCAL APP CON 124.9 269.0 | HAWTHORNE TOWER* 121.1(CTAF) 0 257.8 | GND CON 125.1 |
|----------------------|-------------------------------------|--|-------------------------|



| | | |
|---------|----------|---------|
| ELEV 66 | D | TDZE 63 |
|---------|----------|---------|



Procedure NA for arrivals at SEAL BEACH 115.7 SLI VORTAC on V459-597 southeast bound.



| CATEGORY | A | B | C | D |
|-------------------|---------|---------------|----------------------|------------------------------|
| S-25 | 580-3/4 | 517 (600-3/4) | 580-13/8 | 517 (600-13/8) |
| C CIRCLING | 620-1 | 554 (600-1) | 780-2 714 (800-2) | 780-2 1/4 714 (800-2 1/4) |

SW-3, 09 SEP 2021 to 07 OCT 2021

SW-3, 09 SEP 2021 to 07 OCT 2021