

WAAS CH <b>65825</b> <b>W25A</b>	APP CRS <b>253°</b>	Rwy Idg <b>4193</b> TDZE <b>63</b> Apt Elev <b>66</b>
--	------------------------	---

# RNAV (GPS) RWY 25

JACK NORTHROP FLD/HAWTHORNE MUNI (HHR)

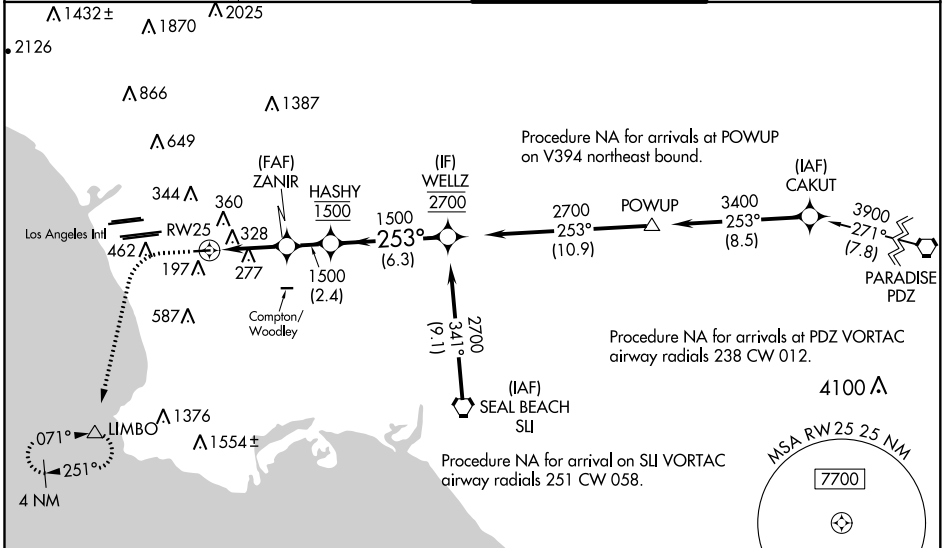
RNP APCH.

**⚠** Circling NA north of Rwy 7-25. Procedure NA at night. Rwy 25 helicopter visibility reduction below 1 SM NA. For uncompensated Baro-VNAV systems, procedure NA below 6°C or above 54°C. Circling NA when control tower closed. For inop ALS increase LNAV/VNAV Cats A/B visibilities to 1 3/4 SM. Inop table does not apply to LPV and LNAV. Simultaneous approach authorized with LAX 25L/R, 24L/R. LNAV and LNAV/VNAV only approach NA during simultaneous operations. Use of FD or AP providing RNAV track guidance required during simultaneous operations.

ODALS

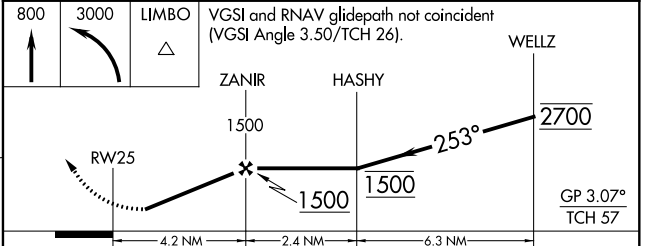
MISSED APPROACH: Climb to 800 then climbing left turn to 3000 direct LIMBO and hold, continue climb-in-hold to 3000.

ATIS <b>118.4</b>	SOCAL APP CON <b>124.9 269.0</b>	HAWTHORNE TOWER ★ <b>121.1(CTAF) 0 257.8</b>	GND CON <b>125.1</b>
----------------------	-------------------------------------	---	-------------------------



ELEV <b>66</b>	<b>D</b>	TDZE <b>63</b>
----------------	----------	----------------

REIL Rwy 25  
MIRL Rwy 7-25



CATEGORY	A	B	C	D
LPV DA		576-1 3/8	513 (600-1 3/8)	
LNAV/VNAV DA		653-1 3/8	590 (600-1 3/8)	
LNAV MDA	580-1	517 (600-1)	580-1 3/8	517 (600-1 3/8)
<b>C</b> CIRCLING	620-1	554 (600-1)	780-2 714 (800-2)	780-2 1/4 714 (800-2 1/4)

SW-3, 09 SEP 2021 to 07 OCT 2021

SW-3, 09 SEP 2021 to 07 OCT 2021