

VORTAC LAX 113.6 Chan 83	APP CRS 261°	Rwy Idg TDZE Apt Elev	4193 63 66
--	------------------------	-----------------------------	---------------------------------------

VOR RWY 25

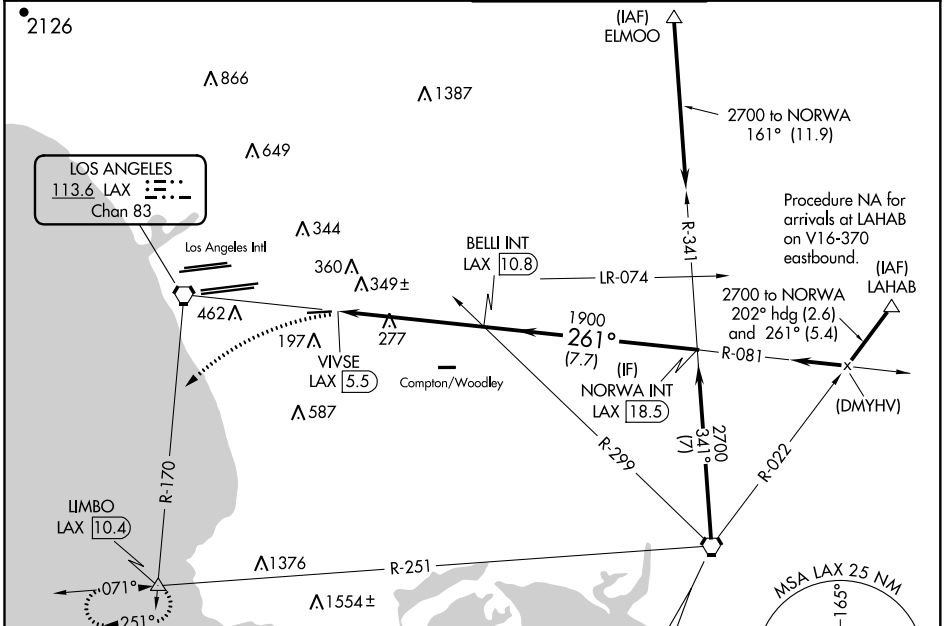
JACK NORTHROP FLD/HAWTHORNE MUNI (HHR)

⚠ Inoperative table does not apply. Circling NA north of Rwy 7-25.
⚠ Rwy 25 helicopter visibility reduction below 1 SM NA. Circling NA when control tower closed. When local altimeter setting not received, use Los Angeles Intl altimeter setting. Procedure NA at night

ODALS

MISSED APPROACH: Climbing left turn to 3000 via heading 210° and LAX VORTAC R-170 to LIMBO INT/LAX 10.4 DME and hold.

ATIS 118.4	SOCAL APP CON 124.9 269.0	HAWTHORNE TOWER* 121.1 (CTAF) 0 257.8	GND CON 125.1
----------------------	-------------------------------------	---	-------------------------



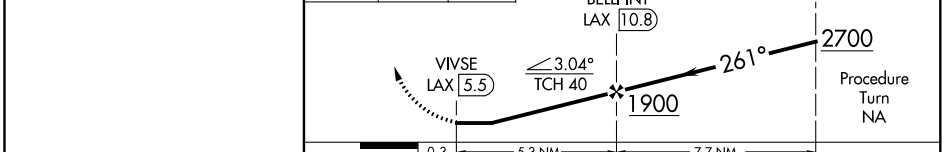
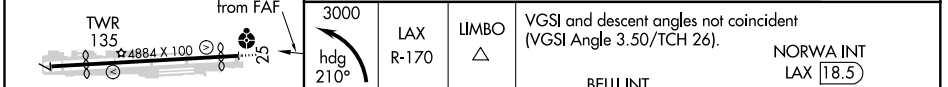
SW-3, 09 SEP 2021 to 07 OCT 2021

SW-3, 09 SEP 2021 to 07 OCT 2021

ELEV 66	TDZE 63
---------	---------



Procedure NA for arrivals at SLI VORTAC on V459-597 southeast bound.



REIL Rwy 25
MIRL Rwy 7-25

FAF to MAP 5.3 NM

Knots	60	90	120	150	180
Min:Sec	5:18	3:32	2:39	2:07	1:46

☑ CIRCLING

CATEGORY	A	B	C	D
S-25	600-1	537 (600-1)	600-1½ 537 (600-1½)	600-1¾ 537 (600-1¾)
☑ CIRCLING	620-1	554 (600-1)	780-2 714 (800-2)	780-2¼ 714 (800-2¼)

VOR RWY 25