

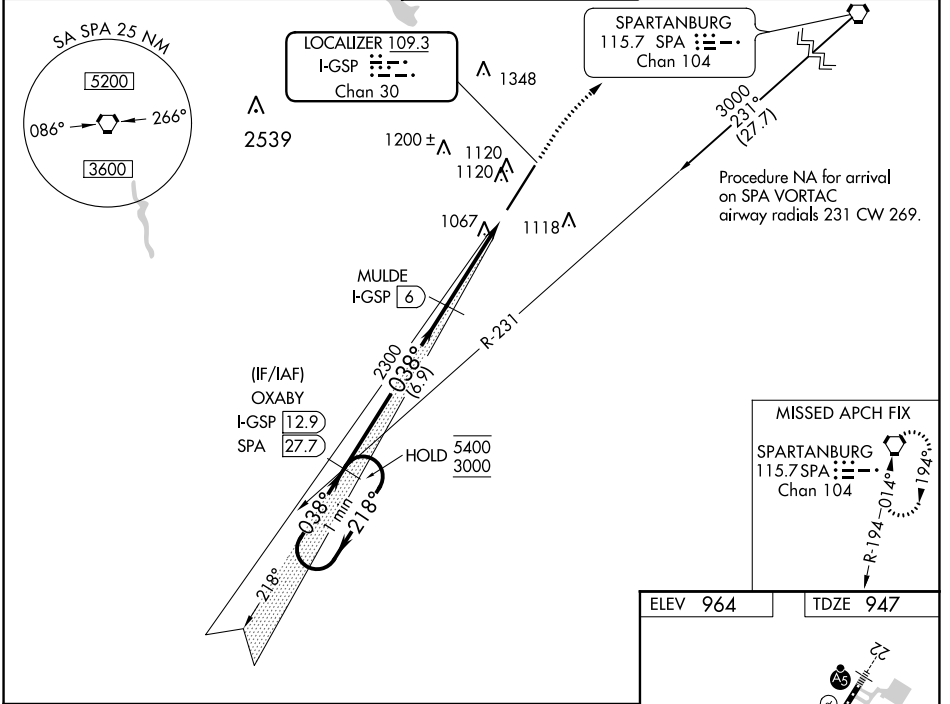
LOC/DME I-GSP <b>109.3</b> Chan 30	APP CRS <b>038°</b>	Rwy Idg <b>11001</b> TDZE <b>947</b> Apt Elev <b>964</b>
--	------------------------	--

# ILS RWY 4 (SA CAT I)

## GREENVILLE SPARTANBURG INTL (GSP)

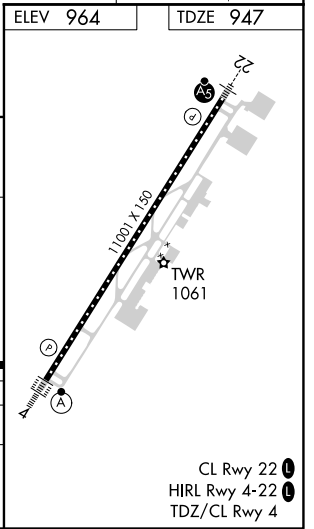
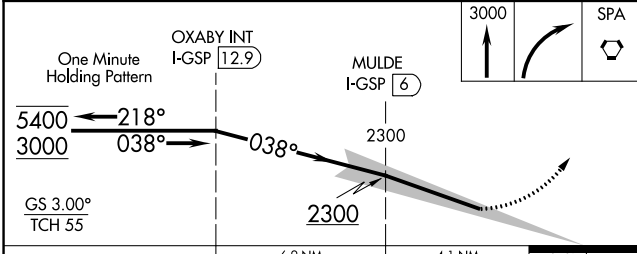
DME required.	ALSF-2	MISSED APPROACH: Climb to 3000 then right turn direct SPA VORTAC and hold.
Requires specific OPSPEC, MSPEC, or LOA approval and use of HUD to DH. Procedure NA when control tower closed.		

ATIS <b>134.25</b>	GREER APP CON ★ <b>118.8 270.275</b>	GREER TOWER ★ <b>120.1(CTAF) 251.15</b>	GND CON <b>121.9</b>	UNICOM <b>122.95</b>
-----------------------	---	--	-------------------------	-------------------------



SE-2, 09 SEP 2021 to 07 OCT 2021

SE-2, 09 SEP 2021 to 07 OCT 2021



CATEGORY	A	B	C	D
S-ILS 4	RA 258/14 150 DA 1097			

**SA CATEGORY I ILS - SPECIAL AIRCREW & AIRCRAFT CERTIFICATION REQUIRED**

- CL Rwy 22
- HIRL Rwy 4-22
- TDZ/CL Rwy 4