

| | | |
|--|------------------------|--|
| WAAS CH 99602 W22A | APP CRS 218° | Rwy Idg 11001 TDZE 964 Apt Elev 964 |
|--|------------------------|--|

RNAV (GPS) RWY 22

GREENVILLE SPARTANBURG INTL (GSP)

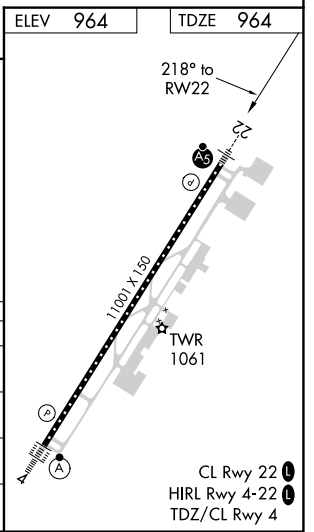
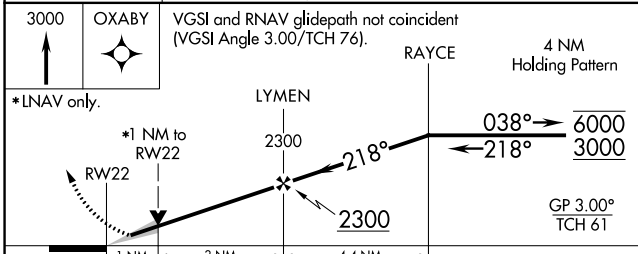
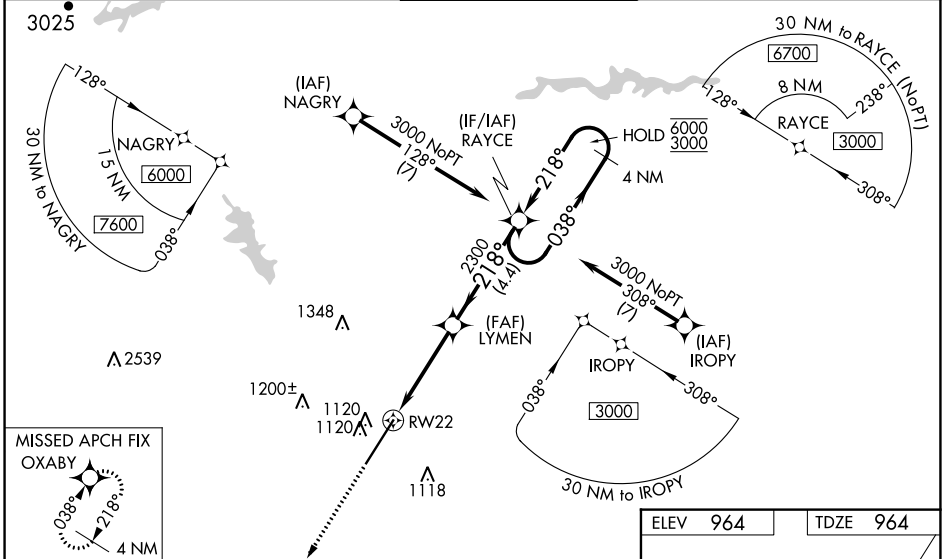
RNP APCH.

For uncompensated Baro-VNAV systems, LNAV/VNAV NA below -10°C or above 54°C. For inop ALS, increase LNAV/VNAV all Cats visibility to RVR 4500. When local altimeter setting not received, use Greenville downtown altimeter setting: increase LPV DA to 1193 feet; increase LNAV/VNAV DA to 1267 feet; increase all MDA 40 feet and LNAV Cat C/D visibility to RVR 4000; increase Circling Cat D visibility to 2½ SM. For inop ALS, when using Greenville downtown altimeter setting, increase LNAV/VNAV all Cats visibility to RVR 4500. VDP and Baro-VNAV NA when using Greenville downtown altimeter setting.

MALSR
AS

MISSED APPROACH:
Climb to 3000 direct OXABY and hold.

| | | | | |
|-----------------------|--|---|-------------------------|-------------------------|
| ATIS 134.25 | GREER APP CON★ 118.8 270.275 | GREER TOWER★ 120.1(CTAF) 251.15 | GND CON 121.9 | UNICOM 122.95 |
|-----------------------|--|---|-------------------------|-------------------------|



| CATEGORY | A | B | C | D |
|--------------|---------|-------------|-------------------------|-------------------------|
| LPV DA | | 1164/24 | 200 (200-½) | |
| LNAV/VNAV DA | | 1238/24 | 274 (300-½) | |
| LNAV MDA | 1360/24 | 396 (400-½) | 1360/35 | 396 (400-¾) |
| CIRCLING | 1440-1 | 476 (500-1) | 1480-1½ 516 (600-1½) | 1700-2¼ 736 (800-2¼) |

SE-2, 09 SEP 2021 to 07 OCT 2021

SE-2, 09 SEP 2021 to 07 OCT 2021