

WAAS CH 63006 W11A	APP CRS 113°	Rwy Idg TDZE Apt Elev	5400 644 660
---------------------------------	------------------------	-----------------------------	---

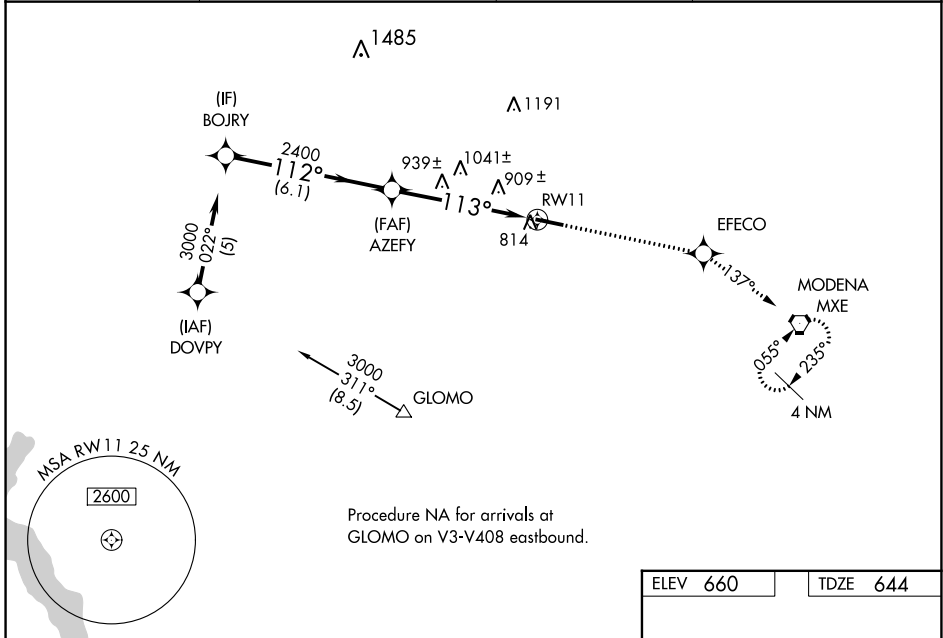
RNAV (GPS) RWY 11

CHESTER COUNTY G O CARLSON (MQS)

⚠ Baro-VNAV NA when using Heritage Fld altimeter setting. For uncompensated Baro-VNAV systems, LNAV/VNAV NA below -16°C (4°F) or above 47°C (116°F). DME/DME RNP-0.3 NA. Rwy 11 helicopter visibility reduction below ¾ SM NA. When local altimeter setting not received, use Heritage Fld altimeter setting and increase all DA 98 feet and all MDA 100 feet, LPV visibility ½ mile all Cats, LNAV/VNAV visibility ½ mile all Cats, LNAV visibility Cats C and D ¼ mile, and Circling visibility Cat C and D ¼ mile.

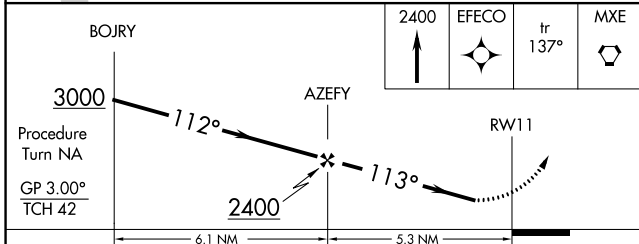
⚠ MISSED APPROACH: Climb to 2400 direct EFECO and on 137° track to MXE VORTAC and hold.

AWOS-3 126.25	PHILADELPHIA APP CON 124.35 319.15	CLNC DEL 125.6	UNICOM 122.7 (CTAF) 0
-------------------------	--	--------------------------	---------------------------------

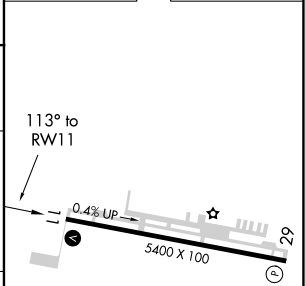


NE-4, 09 SEP 2021 to 07 OCT 2021

NE-4, 09 SEP 2021 to 07 OCT 2021



ELEV 660	TDZE 644
----------	----------



CATEGORY	A	B	C	D
LPV DA	955-1		311 (300-1)	
LNAV/ VNAV DA	1274-2 ¼		630 (700-2 ¼)	
LNAV MDA	1200-1	556 (600-1)	1200-1 ½ 556 (600-1 ½)	1200-1 ¾ 556 (600-1 ¾)
CIRCLING	1200-1 540 (600-1)	1240-1 580 (600-1)	1280-1 ¾ 620 (700-1 ¾)	1440-2 780 (800-2)

HIRL Rwy 11-29 **0**
REIL Rwy 11-29 **0**