

WAAS CH <b>82506</b> <b>W29A</b>	APP CRS <b>293°</b>	Rwy Idg TDZE Apt Elev	<b>5400</b> <b>660</b> <b>660</b>
--	------------------------	-----------------------------	---

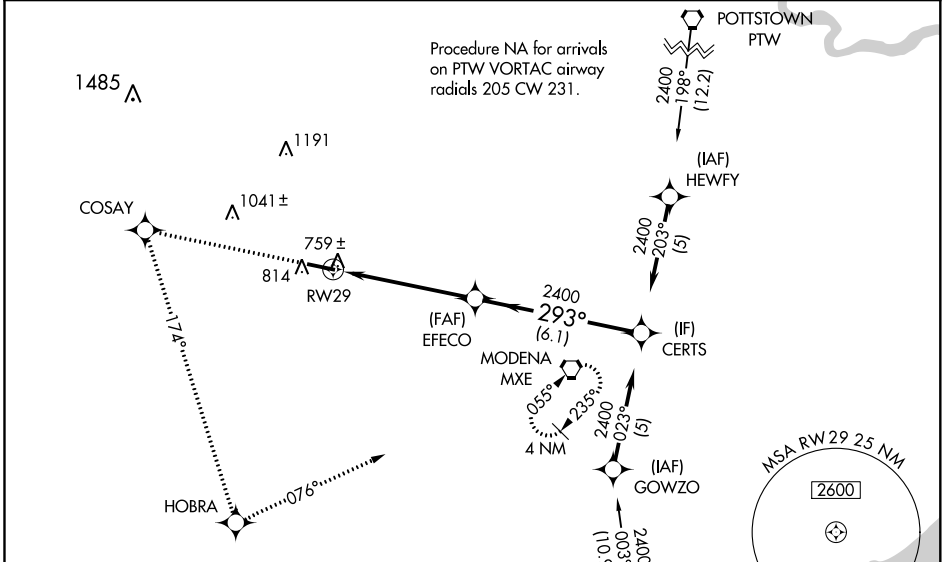
# RNAV (GPS) RWY 29

CHESTER COUNTY G O CARLSON (MQS)

**⚠** Baro-VNAV NA when using Heritage Fld altimeter setting. For uncompensated Baro-VNAV systems, LNAV/VNAV NA below -16°C (4°F) or above 47°C (116°F). DME/DME RNP-0.3 NA. When local altimeter setting not received, use Heritage Fld altimeter setting and increase all DA 98 feet and all MDA 100 feet, LPV visibility ¼ mile all Cats, LNAV/VNAV visibility ¼ mile all Cats, LNAV visibility Cats C and D ¼ mile, and Circling visibility Cat C and D ¼ mile. VDP NA when using Heritage Fld altimeter setting. Rwy 29 helicopter visibility reduction below ¾ SM NA.

**⚠** MISSED APPROACH: Climb to 2400 direct COSAY and left turn on 174° track to HOBRA and left turn on 076° track to MXE VORTAC and hold.

AWOS-3 <b>126.25</b>	PHILADELPHIA APP CON <b>124.35 319.15</b>	CLNC DEL <b>125.6</b>	UNICOM <b>122.7 (CTAF) 0</b>
-------------------------	--	--------------------------	---------------------------------

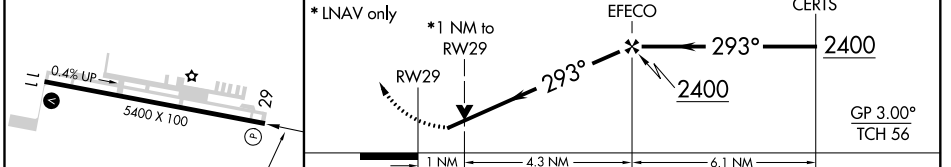
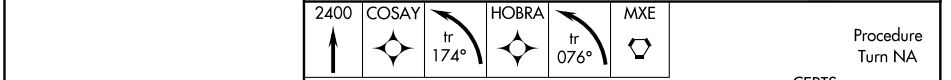


NE-4, 09 SEP 2021 to 07 OCT 2021

NE-4, 09 SEP 2021 to 07 OCT 2021

ELEV 660	TDZE 660
----------	----------

Procedure NA for arrivals on DGO VORTAC airway radials 309 CW 053.



CATEGORY	A	B	C	D
LPV DA		938-1	278 (300-1)	
LNAV/VNAV DA		1029-1¼	369 (400-1¼)	
LNAV MDA		1020-1	360 (400-1)	1020-1¼ 360 (400-1¼)
CIRCLING	1140-1 480 (500-1)	1240-1 580 (600-1)	1280-1¾ 620 (700-1¾)	1440-2½ 780 (800-2½)