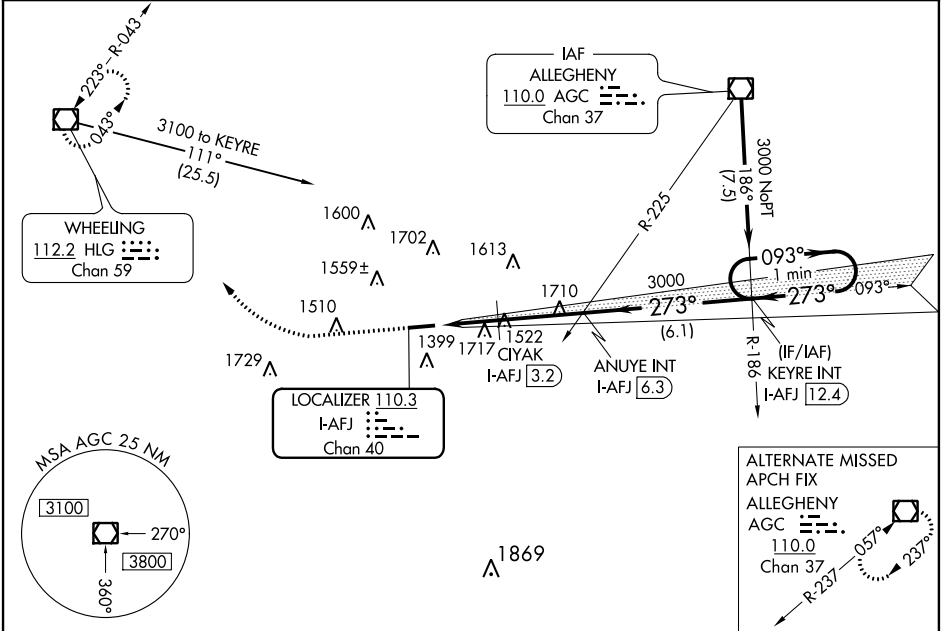


LOC/DME I-AFJ 110.3 Chan 40	APP CRS 273°	Rwy Idg TDZE 1184 Apt Elev 1184
--	------------------------	---

ILS or LOC RWY 27
WASHINGTON COUNTY (AFJ)

<p>▼ Night Landing: Rwy 9 NA. Helicopter visibility reduction below 3/4 SM NA. VDP NA when using Wheeling altimeter setting. When local altimeter setting not received, use Wheeling altimeter setting and increase all DA/MDA 40 feet, increase Circling visibility Cats A and D 1/2 mile; CIYAK fix minimums: increase visibility S-LOC 27 Cats C and D 1/2 mile, Circling Cat C 1/2 mile and Cat D 1/4 mile.</p>		<p>▲ MISSED APPROACH: Climb to 1700 then climbing right turn to 3300 direct HLG VOR/DME and hold.</p>	
AWOS-3PT 119.175	PITTSBURGH APP CON 119.35 285.575	CLNC DEL 127.3	UNICOM 122.975 (CTAF) 0



NE-4, 09 SEP 2021 to 07 OCT 2021

NE-4, 09 SEP 2021 to 07 OCT 2021

ELEV 1184	TDZE 1184	1700	3300	HLG	VGSI and ILS glidepath not coincident. [VGSI Angle 3.09/TCH 62].
<p>HIRL Rwy 9-27 0 REIL Rwy 27 0</p>		<p>* 2020 when using Wheeling altimeter setting. * LOC only.</p>			
<p>FAF to MAP 5.4 NM</p>		<p>One Minute Holding Pattern</p>			
<p>1264± 5004 X 100</p>		<p>ANUYE INT I-AFJ [6.3] KEYRE INT I-AFJ [12.4]</p>			
<p>273° 5.4 NM from FAF</p>		<p>3000 273° 093° 3000</p>			
<p>1.7 NM 0.6 NM 3.1 NM 6.1 NM</p>		<p>GS 3.09° TCH 57</p>			
CATEGORY	A	B	C	D	
S-ILS 27	1384-3/4 200 (200-3/4)				
S-LOC 27	1980-1 796 (800-1)	1980-1 1/4 796 (800-1 1/4)	1980-2 1/2 796 (800-2 1/2)	796 (800-2 1/2)	
CIRCLING	1980-1 796 (800-1)	1980-1 1/4 796 (800-1 1/4)	1980-2 1/2 796 (800-2 1/2)	2040-2 3/4 856 (900-2 3/4)	
CIYAK FIX MINIMUMS					
S-LOC 27	1780-1 596 (600-1)	1780-1 3/4 596 (600-1 3/4)	1780-1 3/4 596 (600-1 3/4)	596 (600-1 3/4)	
CIRCLING	1800-1 616 (700-1)	1800-1 3/4 616 (700-1 3/4)	1800-1 3/4 616 (700-1 3/4)	2040-2 3/4 856 (900-2 3/4)	