

WAAS CH 90107 W27A	APP CRS 273°	Rwy Idg TDZE Apt Elev	5004 1184 1184
--	------------------------	-----------------------------	---

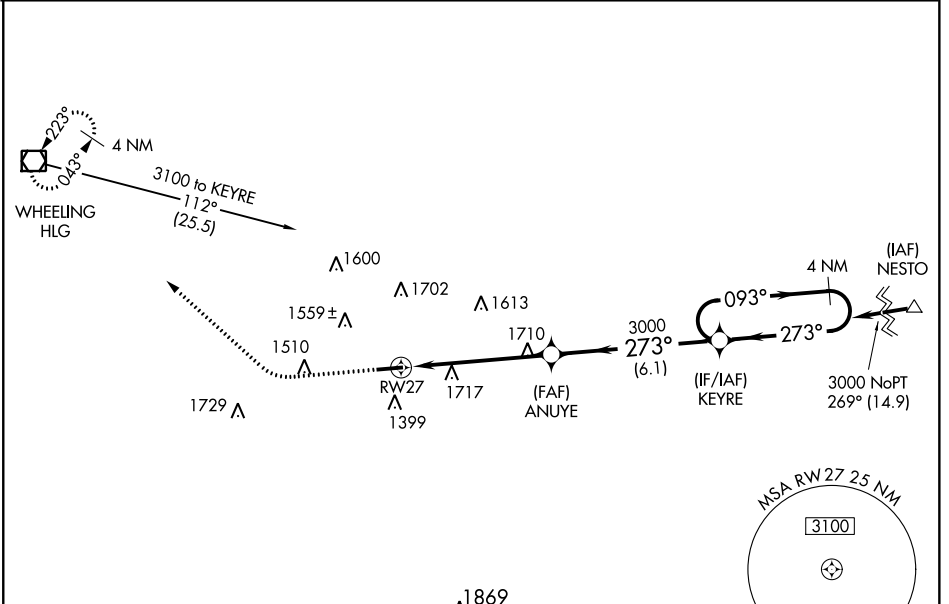
RNAV (GPS) RWY 27

WASHINGTON COUNTY (A.F.J)

⚠ For uncompensated Baro-VNAV systems, LNAV/VNAV NA below -17°C (2°F) or above 45°C (114°F). DME/DME RNP-0.3 NA. Helicopter visibility reduction below ¼ SM NA. Night Landing: Rwy 9 NA. VDP and Baro-VNAV NA when using Wheeling altimeter setting. When local altimeter setting not received, use Wheeling altimeter setting and increase all DA/MDA 40 feet, increase Circling Cat A and Cat D visibility ¼ mile.

⚠ MISSED APPROACH: Climb to 1700 then climbing right turn to 3300 direct HLG VOR/DME and hold.

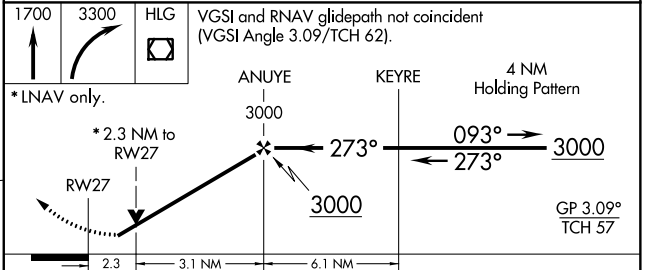
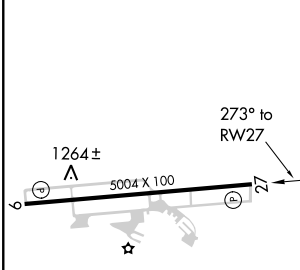
AWOS-3PT 119.175	PITTSBURGH APP CON 119.35 285.575	CLNC DEL 127.3	UNICOM 122.975 (CTAF) 📻
----------------------------	---	--------------------------	--



NE-4, 09 SEP 2021 to 07 OCT 2021

NE-4, 09 SEP 2021 to 07 OCT 2021

ELEV 1184	TDZE 1184
-----------	-----------



CATEGORY	A	B	C	D
LPV DA		1386-¾	202 (300-¾)	
LNAV/VNAV DA		2140-4	956 (1000-4)	
LNAV MDA	1980-1 796 (800-1)	1980-1¼ 796 (800-1¼)	1980-2½ 796 (800-2½)	796 (800-2½)
CIRCLING	1980-1 796 (800-1)	1980-1¼ 796 (800-1¼)	1980-2½ 796 (800-2½)	2040-2¾ 856 (900-2¾)

HIRL Rwy 9-27 **📻**
REIL Rwy 27 **📻**