

RNAV (GPS) RWY 31

APCH CRS	Rwy ldg	10,000
315°	TDZE	9
	Arpt Elev	10

AL-5157 [USAF]

CAPE CANAVERAL AFS SKID STRIP (KXMR)

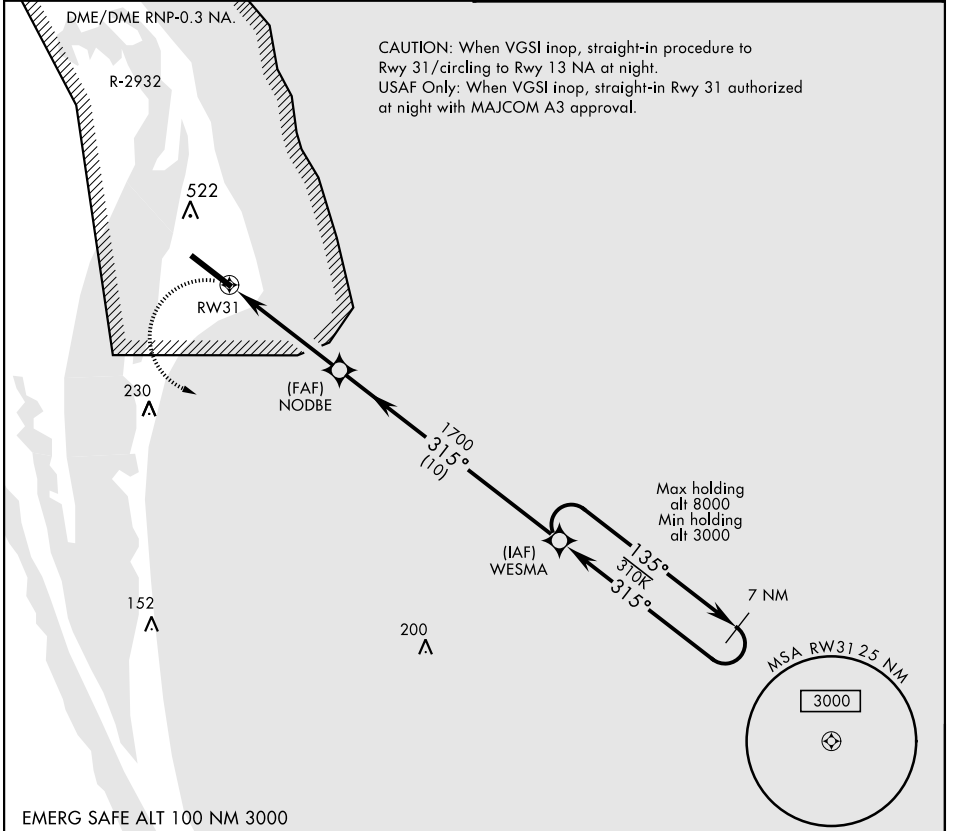
▼ * When ALS inop, increase CAT CDE vis to 1 $\frac{3}{8}$ miles.
 ** Circling not authorized NE of Rwy 13-31.

SALS

MISSED APPROACH: Turn left, climb to 3000 direct WESMA and hold.

ORLANDO APP CON
134.95 281.425

CAPE TOWER *
118.625 143.15 239.05



SE-3, 09 SEP 2021 to 07 OCT 2021

SE-3, 09 SEP 2021 to 07 OCT 2021

EMERG SAFE ALT 100 NM 3000

	WESMA	ELEV	10	TDZE	9
NODBE RW31 1700 5 NM $\leq 3.04^\circ$ TCH 79		WESMA 135° → ← 315° 3000		TWR 10,000 + 200 315° 5 NM from NODBE 235 A 120 A HIRL Rwy 13-31	
CATEGORY	A	B	C	D	E
LNAV MDA *	500-1 491 (500-1)		500-1 $\frac{1}{8}$ 491 (500-1 $\frac{1}{8}$)		
CIRCLING **	580-1 570 (600-1)		580-1 $\frac{1}{2}$ 570 (600-1 $\frac{1}{2}$)	620-2 610 (700-2)	640-2 $\frac{1}{4}$ 630 (700-2 $\frac{1}{4}$)

RNAV (GPS) RWY 31