

ILS or LOC/DME RWY 35

MONROE COUNTY (BMG)

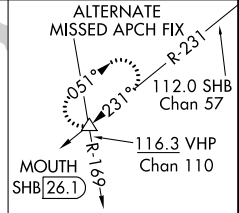
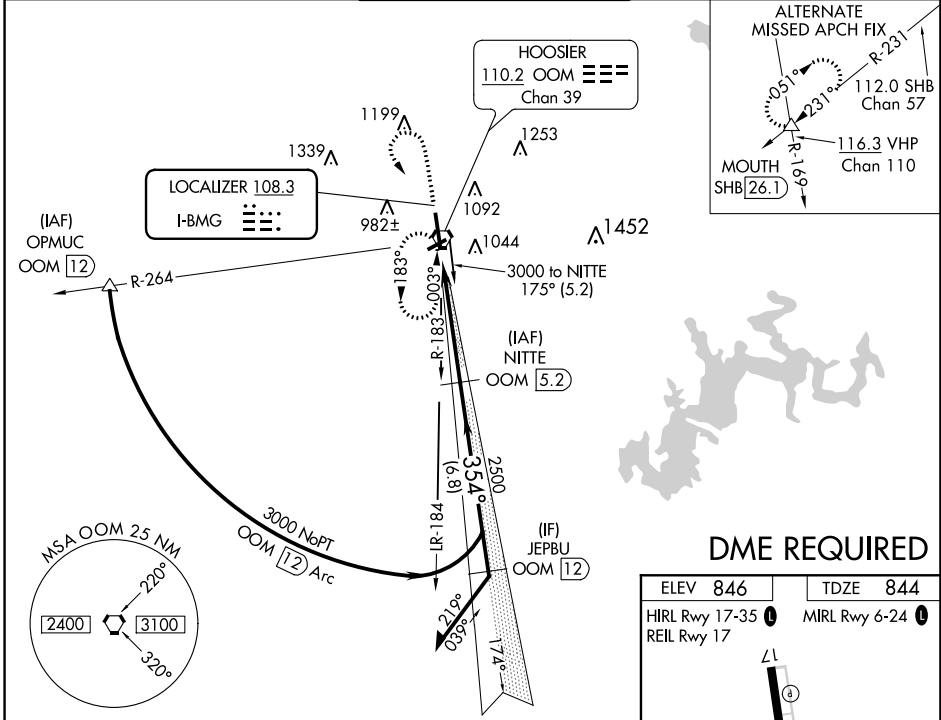
LOC I-BMG 108.3	APP CRS 354°	Rwy Idg TDZE Apt Elev	6500 844 846
---------------------------	------------------------	-----------------------------	---

⚠ Circling to Rwy 6/24 NA at night. When local altimeter setting not received, use Terre Haute Rgnl altimeter setting and increase all DA 121 feet and all MDA 140 feet and increase S-ILS 35 all Cats visibility ¼ mile, S-LOC 35 Cat C, D and Circling Cat C visibility ½ mile and Circling Cat D visibility ¼ mile. For inoperative MALSR when using Terre Haute Rgnl altimeter setting: increase S-ILS 35 all Cats visibility to 1¼ miles. DME from OOM VORTAC. Simultaneous reception of I-BMG and OOM DME required.



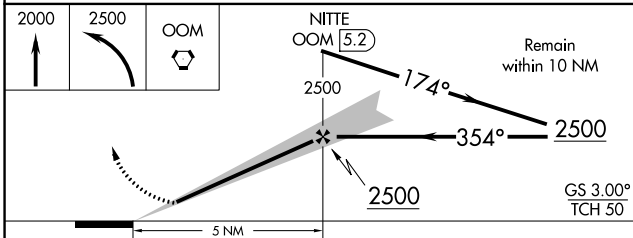
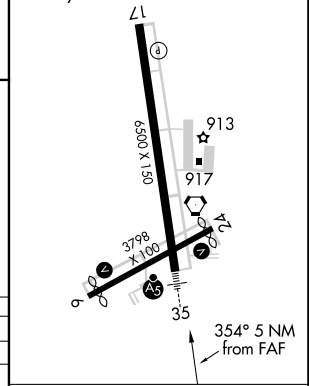
MISSED APPROACH:
Climb to 2000 then climbing left turn to 2500 direct OOM VORTAC and hold.

ASOS 134.525	HULMAN APP CON 128.025 339.8	BLOOMINGTON TOWER * 120.775 (CTAF) 0	GND CON 121.9	UNICOM 122.95
------------------------	--	---	-------------------------	-------------------------



DME REQUIRED

ELEV 846	TDZE 844
HIRL Rwy 17-35	MIRL Rwy 6-24
REIL Rwy 17	



CATEGORY	A	B	C	D
S-ILS 35		1044-½	200 (200-½)	
S-LOC 35	1420-½	576 (600-½)	1420-1 576 (600-1)	1420-1¼ 576 (600-1¼)
CIRCLING	1420-1	574 (600-1)	1420-1½ 574 (600-1½)	1420-2 574 (600-2)

FAF to MAP 5 NM					
Knots	60	90	120	150	180
Min:Sec	5:00	3:20	2:30	2:00	1:40

EC-2, 09 SEP 2021 to 07 OCT 2021

EC-2, 09 SEP 2021 to 07 OCT 2021