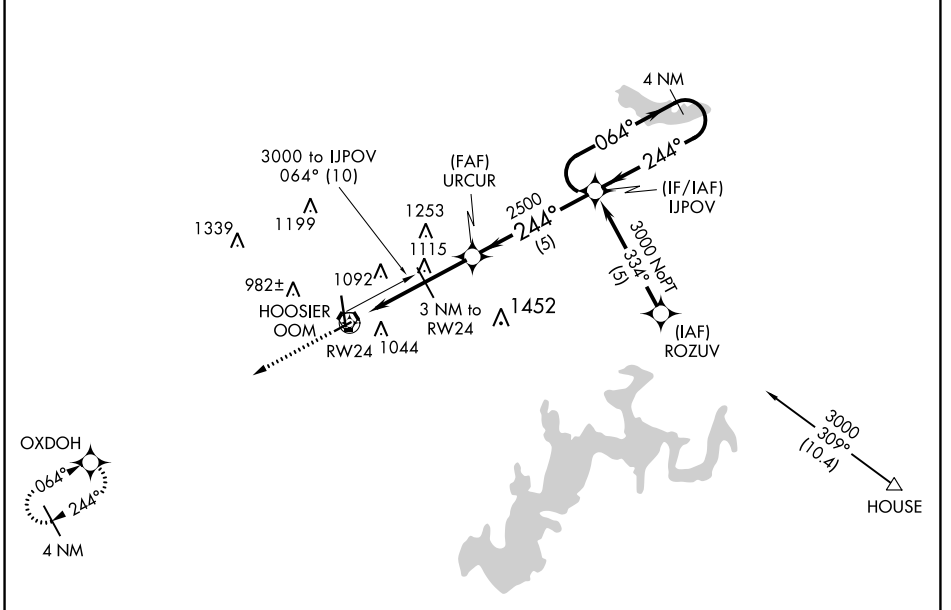


APP CRS 244°	Rwy Idg TDZE Apt Elev	3576 841 846
------------------------	-----------------------------	---

RNAV (GPS) RWY 24

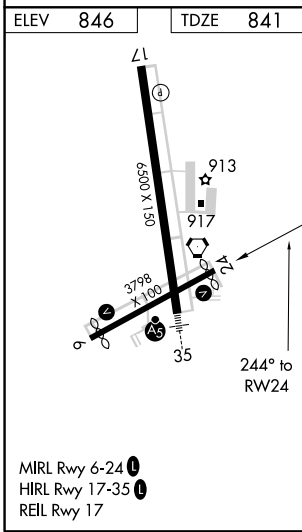
MONROE COUNTY (BMG)

RNP APCH.		<p>▼ Rwy 24 helicopter visibility reduction below 1 SM NA. Procedure NA at night. ▲ When local altimeter setting not received use Terre Haute Rgnl altimeter setting and increase all MDA 140 feet; increase LNAV Cat C/D ¼ mile.</p>		
ASOS 134.525	HULMAN APP CON 128.025 339.8	BLOOMINGTON TOWER * 120.775 (CTAF) 0	GND CON 121.9	UNICOM 122.95



EC-2, 09 SEP 2021 to 07 OCT 2021

EC-2, 09 SEP 2021 to 07 OCT 2021



3000	OXDOH	VGSI and descent angle not coincident (VGSI Angle 4.00/TCH 49).	IJPOV	4 NM Holding Pattern
URUR	3 NM to RW24	2500	064°	3000
1840	3.06° TCH 31	2 NM	5 NM	
CATEGORY	A	B	C	D
LNAV MDA	1320-1	479 (500-1)	1320-1¼ 479 (500-1¼)	1320-1½ 479 (500-1½)