


WAAS CH <b>72812</b> W <b>35A</b>	APP CRS <b>354°</b>	Rwy Idg TDZE Apt Elev	<b>6500</b> <b>844</b> <b>846</b>
---	------------------------	-----------------------------	---


# RNAV (GPS) RWY 35

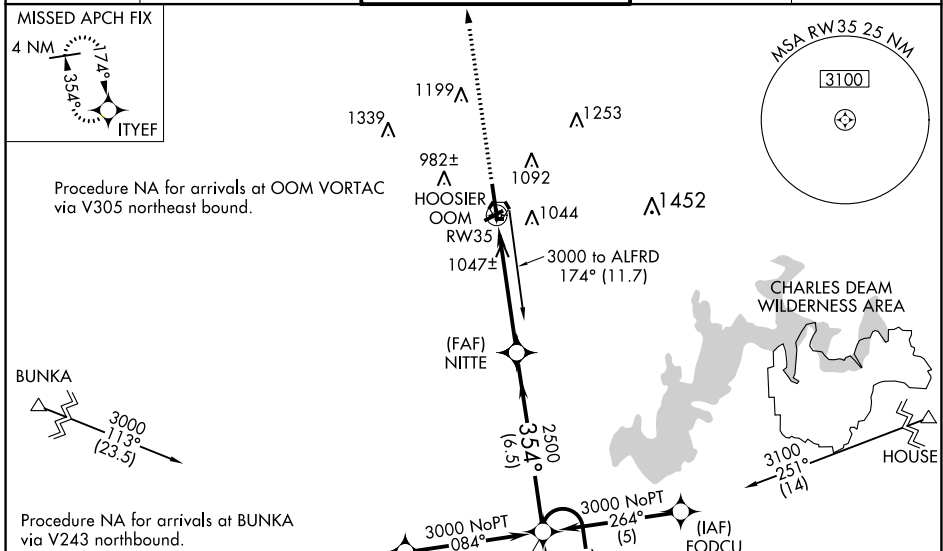
MONROE COUNTY (BMG)

**⚠** For uncompensated Baro-VNAV systems, LNAV/VNAV NA below -16°C (4°F) or above 47°C (116°F). DME/DME RNP-0.3 NA. When local altimeter setting not received, use Terre Haute Rgnl altimeter setting and increase all DA 121 feet and all MDA 140 feet and increase LPV all Cats, LNAV Cat C, D and Circling Cat D visibility ½ mile. LNAV/VNAV all Cats and Circling C visibility ½ mile. For inoperative MALS/R when using Terre Haute Rgnl altimeter setting; increase LPV all Cats visibility ½ mile. Baro-VNAV and VDP NA when using Terre Haute Rgnl altimeter setting. Circling to Rwy 6/24 NA at night.

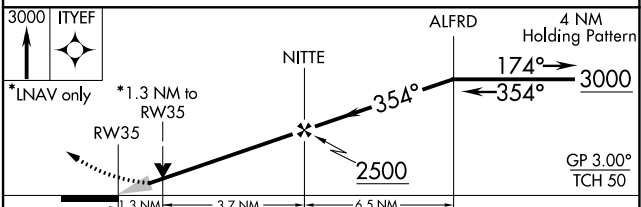
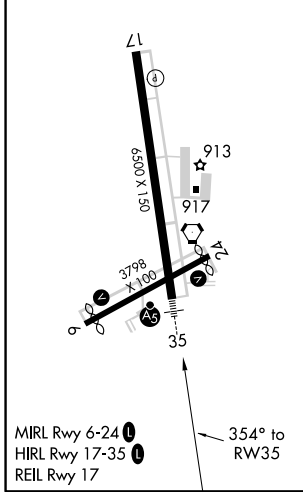
**MALS/R**  


**MISSED APPROACH:**  
Climb to 3000 direct IITYEF and hold.

ASOS <b>134.525</b>	HULMAN APP CON <b>128.025 339.8</b>	<b>BLOOMINGTON TOWER *</b> <b>120.775 (CTAF)</b> 	GND CON <b>121.9</b>	UNICOM <b>122.95</b>
------------------------	--	---	-------------------------	-------------------------



ELEV <b>846</b>	TDZE <b>844</b>
-----------------	-----------------



CATEGORY	A	B	C	D
LPV DA		1044-1/2	200 (200-1/2)	
LNAV/VNAV DA		1344-1 1/4	500 (500-1/4)	
LNAV MDA	1300-1/2	456 (500-1/2)	1300-3/4 456 (500-3/4)	1300-1 456 (500-1)
CIRCLING	1380-1 534 (600-1)	1400-1 554 (600-1)	1400-1 1/2 554 (600-1 1/2)	1400-2 554 (600-2)

EC-2, 09 SEP 2021 to 07 OCT 2021

EC-2, 09 SEP 2021 to 07 OCT 2021