

NDB	MOQ	APP CRS	Rwy Idg	5001
	263	329°	TDZE	41
			Apt Elev	46

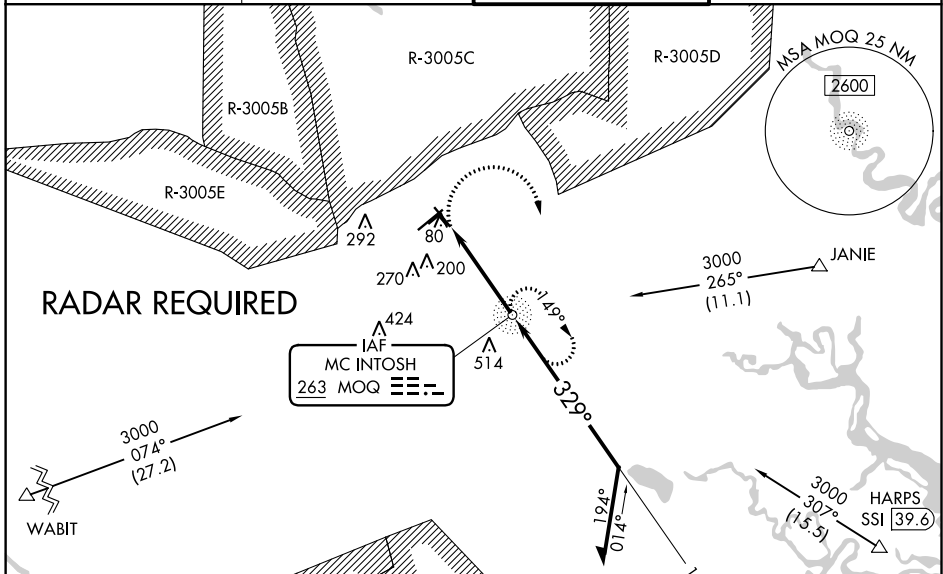
NDB RWY 33R

WRIGHT AAF (FORT STEWART)/MIDCOAST RGNL (LHW)

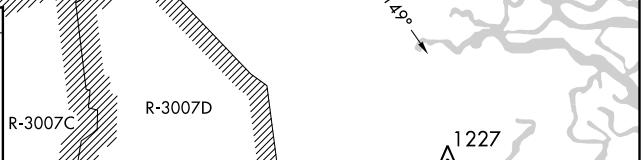
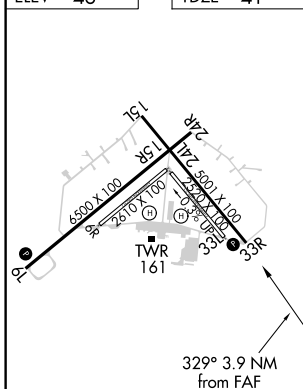
▼ When local altimeter setting not received, use Savannah/Hilton Head Intl altimeter setting and increase all MDA 60 feet, S-33R Cat C/D visibility 1/8 mile, and Circling Cat C/D visibility 1/4 mile. Procedure NA when R-3005C/D or R-3007C is active and LHW tower is closed. Night landing: Rwy 6R, NA. Circling NA northeast of Rwy 15L/33R. Circling to Rwy 6L, 24R NA at night.

MISSED APPROACH: Climbing right turn to 2300 direct MOQ NDB and hold, continue climb-in-hold to 2300.

ATIS ★ 118.475	SAVANNAH APP CON★ 120.4 353.775	WRIGHT TOWER ★ 126.25 (CTAF) 0 269.275	GND CON 121.7 273.575
--------------------------	---	--	---------------------------------



ELEV 46	TDZE 41
---------	---------



MOQ NDB	2300	149°	2300
329°	1500	3.43°	TCH 65
3.9 NM			

HIRL Rwy 6L-24R, 15L-33R	FAF to MAP 3.9 NM				
Knots	60	90	120	150	180
Min:Sec	3:54	2:36	1:57	1:34	1:18
CIRCLING	520-1 474 (500-1)	620-1 574 (600-1)	660-1 3/4 614 (700-1 3/4)	680-2 634 (700-2)	

NDB RWY 33R

SE-4, 09 SEP 2021 to 07 OCT 2021

SE-4, 09 SEP 2021 to 07 OCT 2021