

WAAS CH <b>61125</b> W11A	APP CRS <b>114°</b>	Rwy Idg TDZE Apt Elev	<b>4460</b> <b>96</b> <b>103</b>
---------------------------------	------------------------	-----------------------------	----------------------------------------

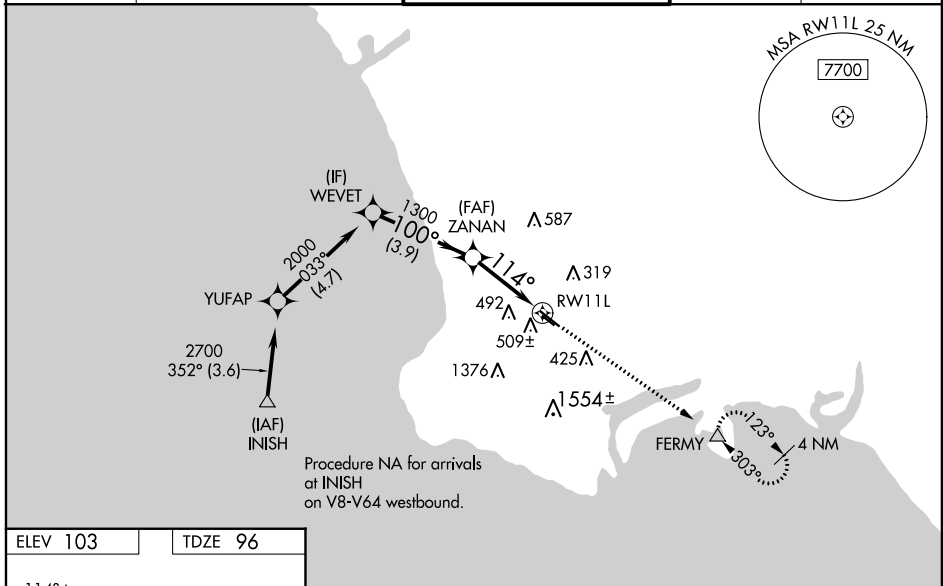
# RNAV (GPS) RWY 11L

ZAMPERINI FLD (TOA)

**⚠** For uncompensated Baro-VNAV systems, LNAV/VNAV NA below 3°C (38°F) or above 54°C (130°F). Circling NA southwest of Rwy 11R-29L. Baro-VNAV and VDP NA when using Los Angeles Intl altimeter setting. DME/DME RNP-0.3 NA. When local altimeter setting not received, except for operators with approved weather reporting service, use Los Angeles Intl altimeter setting: increase LPV DA to 390 feet and LNAV/VNAV DA to 714 feet and all MDA 40 feet; increase LNAV/VNAV all Cats visibility, LNAV Cat C visibility and Circling Cat C visibility 1/8 SM. Rwy 11L helicopter visibility reduction below 3/4 SM NA.

MISSED APPROACH: Climb to 2700 direct FERMV and hold, continue climb-in-hold to 2700.

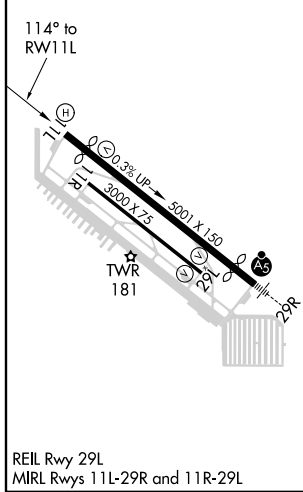
ATIS <b>125.6</b>	SOCAL APP CON <b>124.3 363.2</b> (Rwys 11L, 11R) <b>127.2 269.6</b> (Rwys 29L, 29R)	<b>TORRANCE TOWER*</b> <b>133.075 257.8</b> (NORTH) <b>124.0</b> (CTAF) <b>0 257.8</b> (SOUTH)	GND CON <b>120.9</b>	UNICOM <b>122.95</b>
----------------------	-------------------------------------------------------------------------------------------	------------------------------------------------------------------------------------------------------	-------------------------	-------------------------



SW-3, 09 SEP 2021 to 07 OCT 2021

SW-3, 09 SEP 2021 to 07 OCT 2021

ELEV 103	TDZE 96
----------	---------



REIL Rwy 29L  
MIRL Rwys 11L-29R and 11R-29L

VGSI and RNAV glidepath not coincident (VGSI Angle 3.50/TCH 10).

	WEVET	ZANAN		FERMV
	2000	1300		2700
	100°	114°		
	1300			
	3.9 NM	1.7 NM	1.5 NM	
	*1.5 NM to RWY 11L			
	*LNAV only.			
GP 3.43° TCH 59				
CATEGORY	A	B	C	D
LPV DA	366-7/8 270 (300-7/8)			NA
LNAV/VNAV DA	690-13/4 594 (600-13/4)			NA
LNAV MDA	640-1	544 (600-1)	640-15/8 544 (600-15/8)	NA
<b>C</b> CIRCLING	640-1 537 (600-1)	680-1 577 (600-1)	680-15/8 577 (600-15/8)	NA