

WAAS CH 82413 W26A	APP CRS 267°	Rwy Idg 5001 TDZE 787 Apt Elev 794
--	------------------------	---

RNAV (GPS) RWY 26R

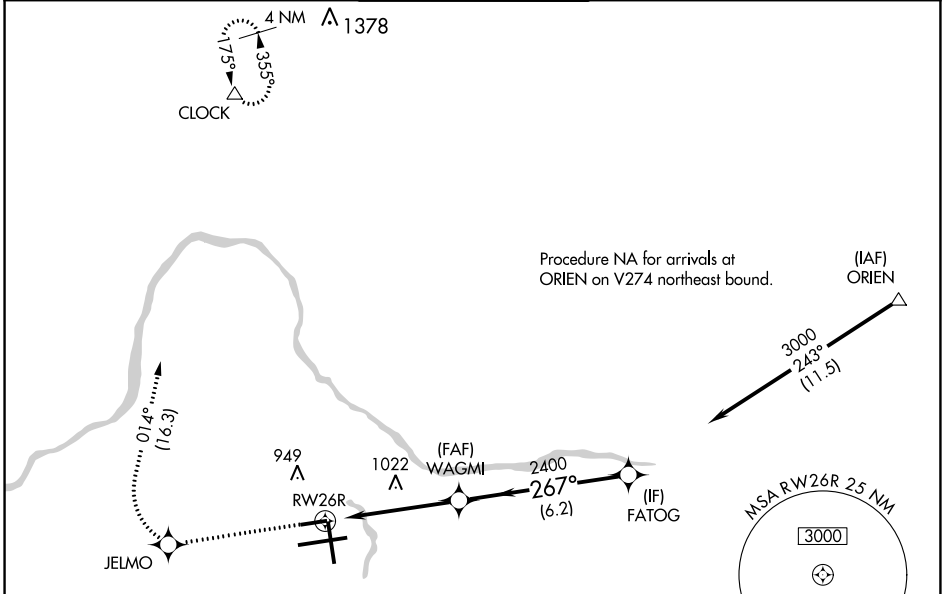
GERALD R FORD INTL (G.R.R.)

RNP APCH.

ASR For uncompensated Baro-VNAV systems, LNAV/VNAV NA below -16°C or above 47°C. Rwy 26R helicopter visibility reduction below 1 SM NA.

MISSED APPROACH: Climb to 3000 direct JELMO and right turn on track 014° to CLOCK and hold.

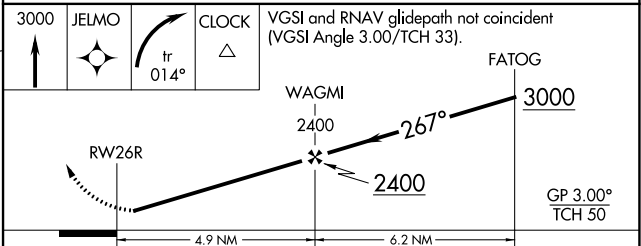
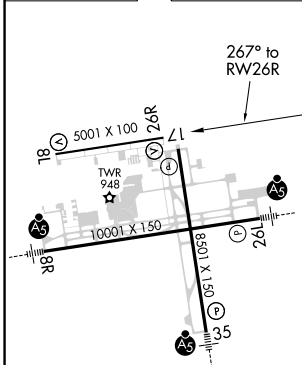
ATIS 118.725	GREAT LAKES APP CON * 128.4 257.6	GRAND RAPIDS TOWER * 135.65 (CTAF) 339.8	GND CON 121.8	CLNC DEL 119.3	UNICOM 122.95
------------------------	---	--	-------------------------	--------------------------	-------------------------



EC-1, 09 SEP 2021 to 07 OCT 2021

EC-1, 09 SEP 2021 to 07 OCT 2021

ELEV 794	D	TDZE 787
----------	----------	----------



CATEGORY	A	B	C	D
LPV DA	1037-1 250 (300-1)			
LNAV/VNAV DA	1216-1½ 429 (500-1½)			
LNAV MDA	1280-1	493 (500-1)	1280-1¾ 493 (500-1¾)	1280-1½ 493 (500-1½)
C CIRCLING	1280-1	486 (500-1)	1340-1½ 546 (600-1½)	1360-2 566 (600-2)

MIRL Rwy 8L-26R **L**
REIL Rwy 8L, 17 and 26R **L**
HIRL Rwy 8R-26L and 17-35 **L**