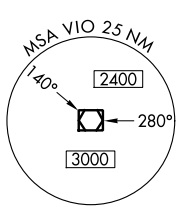
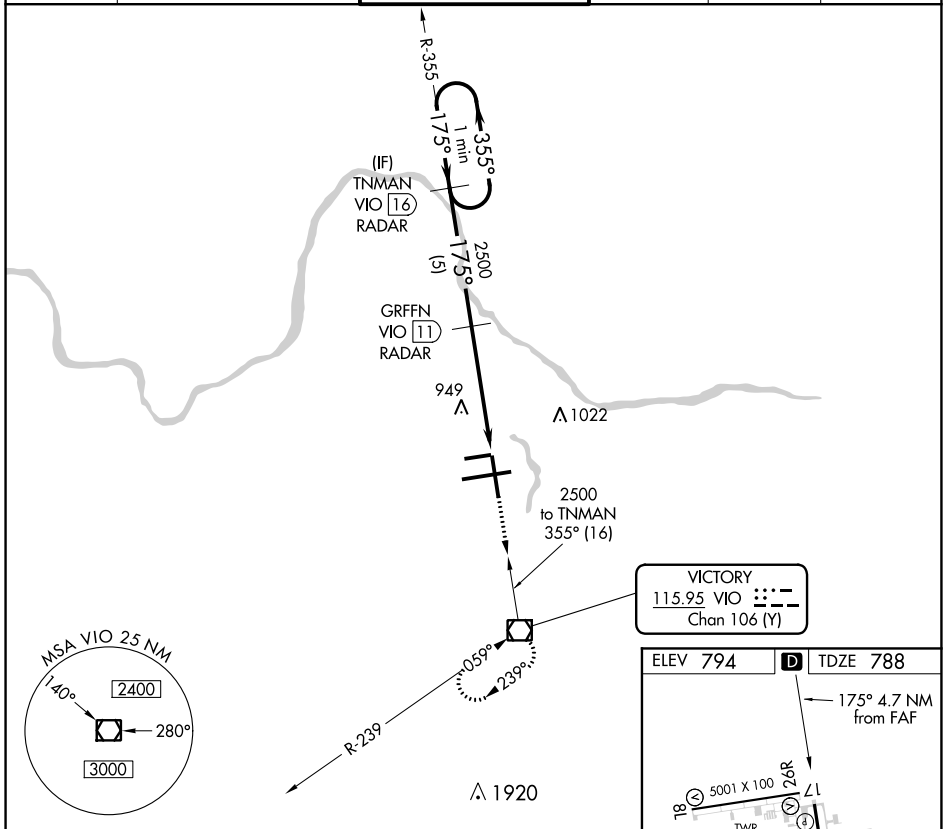


VOR/DME VIO	APP CRS	Rwy Idg	8501
115.95	175°	TDZE	788
Chan 106 (Y)		Apt Elev	794

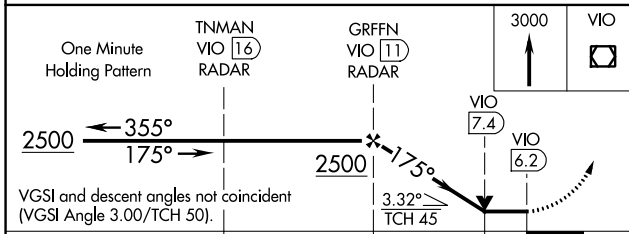
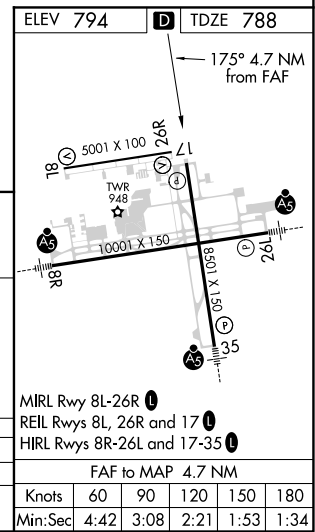
VOR RWY 17

GERALD R FORD INTL (G.R.)

DME or RADAR required.		MISSED APPROACH: Climb to 3000 direct VIO VOR/DME and hold.				
<p>⚠ When local altimeter setting not received, use Holland altimeter setting and increase all MDAs 80 feet and increase S-17 Cat D visibility ¼ SM. Rwy 17 helicopter visibility reduction below ¼ SM NA.</p>		<p>GRAND RAPIDS TOWER ★</p> <p>135.65 (CTAF) 0 339.8</p>		GND CON	CLNC DEL	UNICOM
ATIS	GREAT LAKES APP CON ★			121.8	119.3	122.95
118.725	128.4 257.6					



VICTORY
 115.95 VIO
 Chan 106 (Y)



One Minute Holding Pattern	TNMAN VIO 16 RADAR	GRFFN VIO 11 RADAR	3000	VIO
2500 ← 355°	← 175° →	2500	3.32° TCH 45	VIO 7.4
VGSi and descent angles not coincident (VGSi Angle 3.00/TCH 50).				VIO 6.2
	5 NM	3.5 NM	1.2	
CATEGORY	A	B	C	D
S-17	1200-1	412 (500-1)	1200-1¼	412 (500-1¼)
Ⓢ CIRCLING	1280-1	486 (500-1)	1340-1½	1360-2
			546 (600-1½)	566 (600-2)

MIRL Rwy 8L-26R
 REIL Rwy 8L, 26R and 17
 HIRL Rwy 8R-26L and 17-35

FAF to MAP 4.7 NM

Knots	60	90	120	150	180
Min:Sec	4:42	3:08	2:21	1:53	1:34

EC-1, 09 SEP 2021 to 07 OCT 2021

EC-1, 09 SEP 2021 to 07 OCT 2021