

# RNAV (GPS) RWY 8

HOPKINSVILLE-CHRISTIAN COUNTY (HVC)

APP CRS	Rwy Idg	<b>5505</b>
<b>079°</b>	TDZE	<b>540</b>
	Apt Elev	<b>564</b>

RNP APCH.

**▼** Rwy 8 helicopter visibility reduction below 1 SM NA. When local altimeter setting not received, use Clarksville altimeter setting and increase all MDA 40 feet. Procedure NA at night.

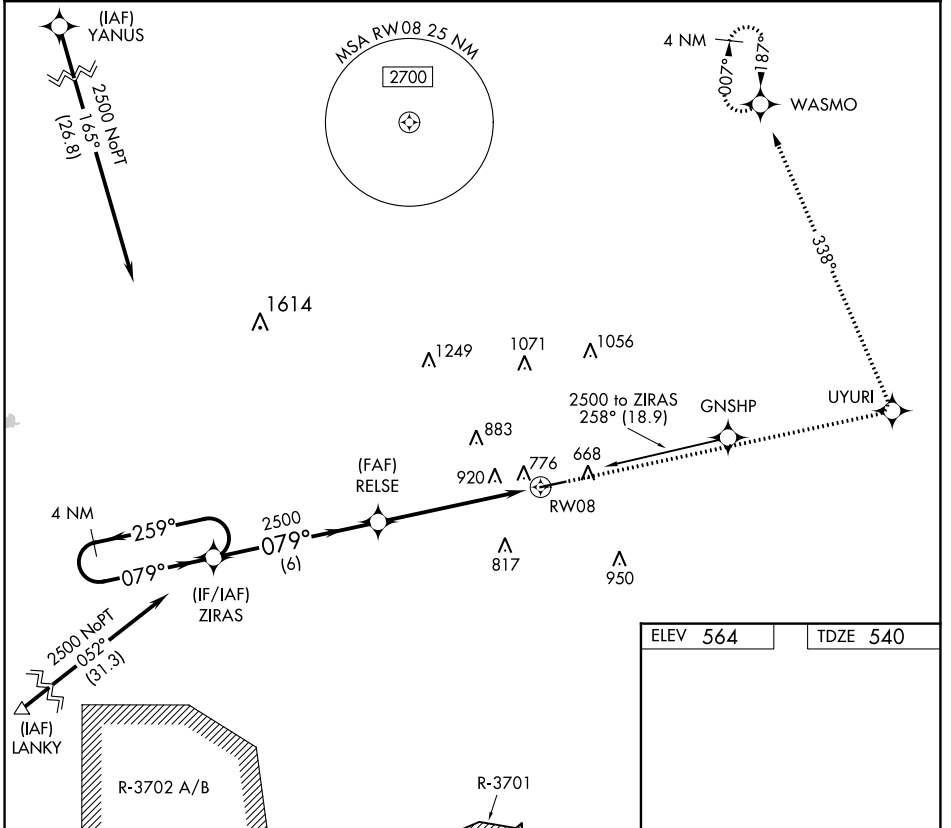
**▲ NA**

**MISSED APPROACH:** Climb to 3000 direct UYURI and left turn via 338° track to WASMO and hold.

AWOS-3  
**132.575**

CAMPBELL APP CON  
**118.1 269.525**

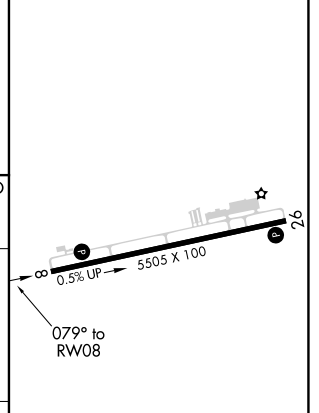
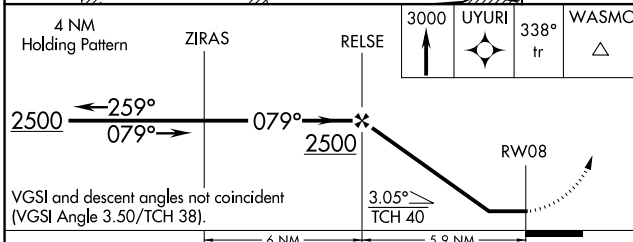
UNICOM  
**122.8 (CTAF) 0**



SE-1, 09 SEP 2021 to 07 OCT 2021

SE-1, 09 SEP 2021 to 07 OCT 2021

ELEV 564	TDZE 540
----------	----------



CATEGORY	A	B	C	D
LNVA MDA	1220-1	680 (700-1)	1220-2	1220-2 1/4
			680 (700-2)	680 (700-2 1/4)

MIRL Rwy 8-26 **0**  
REIL Rwy 8 and 26 **0**