

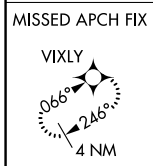
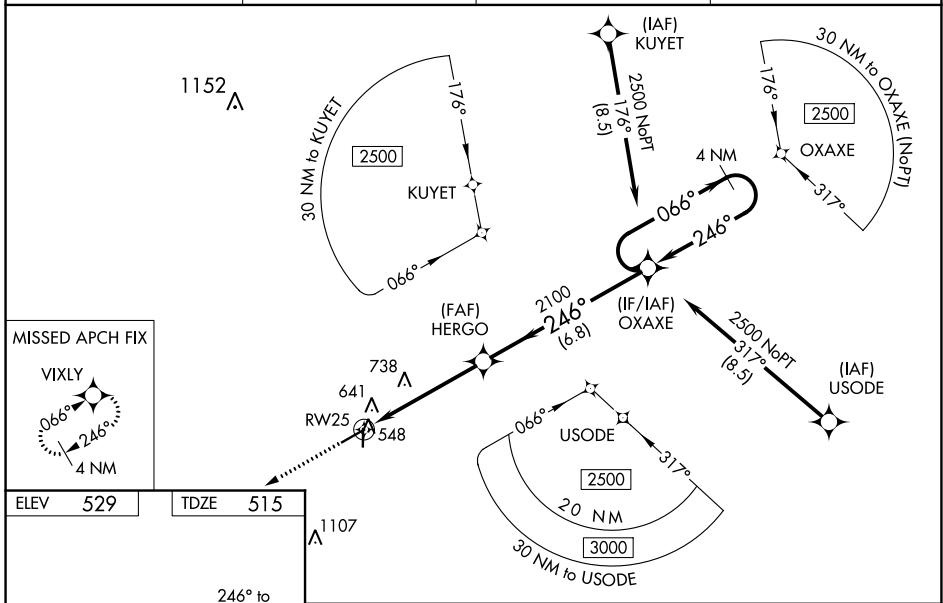
WAAS CH <b>50301</b> W25A	APP CRS <b>246°</b>	Rwy Idg TDZE Apt Elev	<b>5500</b> <b>515</b> <b>529</b>
---------------------------------	------------------------	-----------------------------	---

# RNAV (GPS) RWY 25

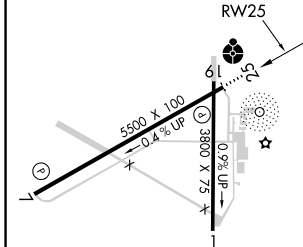
AIKEN RGNL (AIK)

RNP APCH.	<p>ODALS</p>	<p>MISSED APPROACH: Climb to 3000 direct VIXLY and hold.</p>
<p><b>▽</b> Baro-VNAV NA when using Augusta Rgnl at Bush Fld altimeter setting.  <b>△</b> NA For uncompensated Baro-VNAV systems, LNAV/VNAV NA below -16°C or above 40°C. VDP NA with Augusta Rgnl at Bush Fld altimeter setting. When local altimeter setting not received, use Augusta Rgnl at Bush Fld altimeter setting: increase LPV all Cats DA to 869 feet, LNAV/VNAV all Cats DA to 927 feet and all visibilities 3/8 mile; increase all MDA 120 feet and Cat C/D visibilities 1/4 mile. For inop ODALS, increase LPV all Cats visibility to 7/8 mile, LNAV/VNAV all Cats to 1 1/8 mile and LNAV Cat C/D to 1 1/4 mile. For inop ODALS when using Augusta Rgnl at Bush Fld altimeter setting, increase LPV all Cats visibility to 1 1/4 mile, LNAV/VNAV all Cats to 1 1/2 mile and LNAV Cat D to 1 3/8 mile.</p>		

AWOS-3 <b>118.025</b>	AUGUSTA APP CON * <b>119.15 284.625</b>	CLNC DEL <b>126.075</b>	UNICOM <b>122.8 (CTAF)</b>
--------------------------	--	----------------------------	-------------------------------



ELEV 529	TDZE 515
----------	----------



3000	VIXLY	VGSI and RNAV glidepath not coincident (VGSI Angle 3.00/TCH 27).	4 NM Holding Pattern
*LNAV only.	*1.3 NM to RW25	HERGO 2100	OXAXE 2500
	1.3	3.6 NM	6.8 NM
			GP 3.00° TCH 45

CATEGORY	A	B	C	D
LPV DA	765-3/4 250 (300-3/4)			
LNAV/VNAV DA	823-1 308 (300-1)			
LNAV MDA	940-3/4	425 (500-3/4)	940-1/8	425 (500-1/8)

SE-2, 09 SEP 2021 to 07 OCT 2021

SE-2, 09 SEP 2021 to 07 OCT 2021