

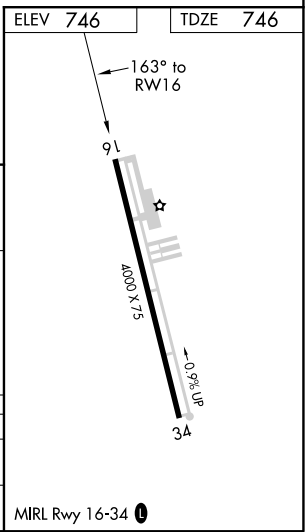
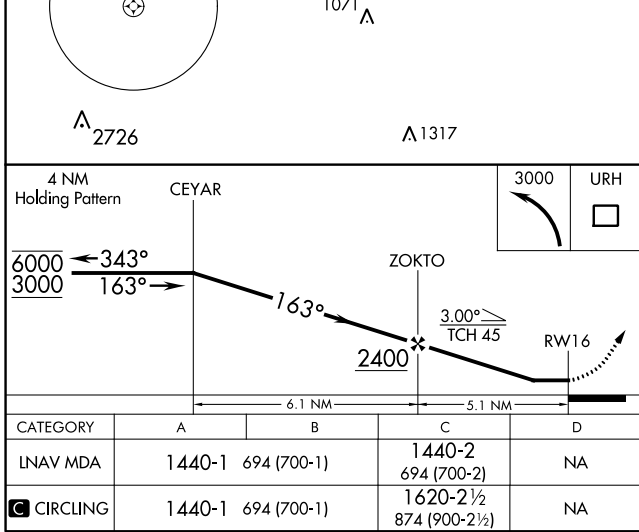
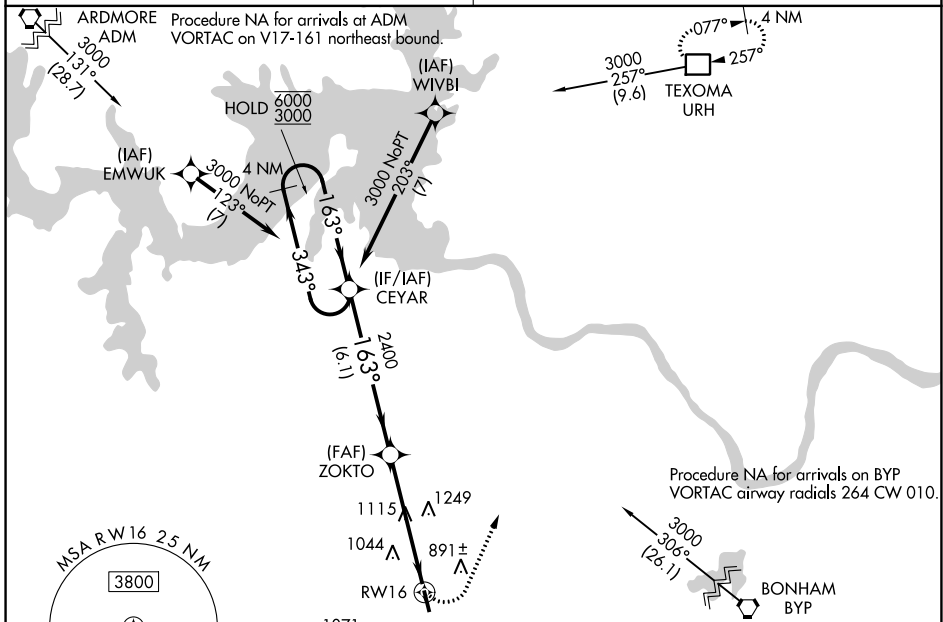
APP CRS	Rwy Idg	<b>4000</b>
<b>163°</b>	TDZE	<b>746</b>
	Apt Elev	<b>746</b>

# RNAV (GPS) RWY 16

SHERMAN MUNI (SWI)

RNP APCH	<p>Use Sherman/Denison altimeter setting, if not received use Dallas Love Fld altimeter setting and increase all MDA 140 feet and increase LNAV visibility Cat B ¼ SM, Cat C ½ SM, and increase Circling visibility Cats A/B ¼ SM, Cat C ½ SM. Procedure NA at night. Rwy 16 helicopter visibility reduction below 1 SM NA.</p>	<p>MISSED APPROACH: Climbing left turn to 3000 direct URH DME and hold.</p>
----------	---	---

<p><b>FORT WORTH CENTER</b> <b>124.75 323.0</b></p>	<p><b>UNICOM</b> <b>122.8 (CTAF) 0</b></p>
---	--



SC-2, 09 SEP 2021 to 07 OCT 2021

SC-2, 09 SEP 2021 to 07 OCT 2021