

| | | | |
|--|------------------------|-----------------------------|---|
| WAAS CH 86534 W34A | APP CRS 343° | Rwy Idg TDZE Apt Elev | 4000 739 746 |
|--|------------------------|-----------------------------|---|

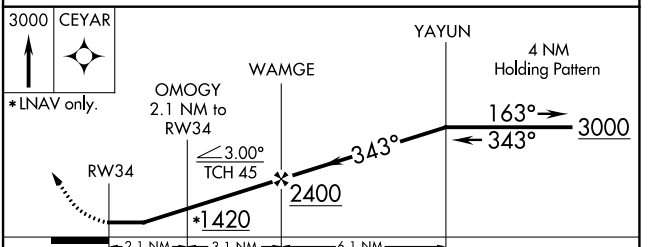
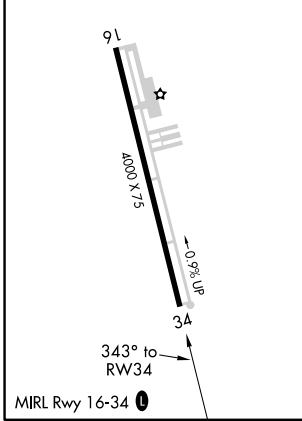
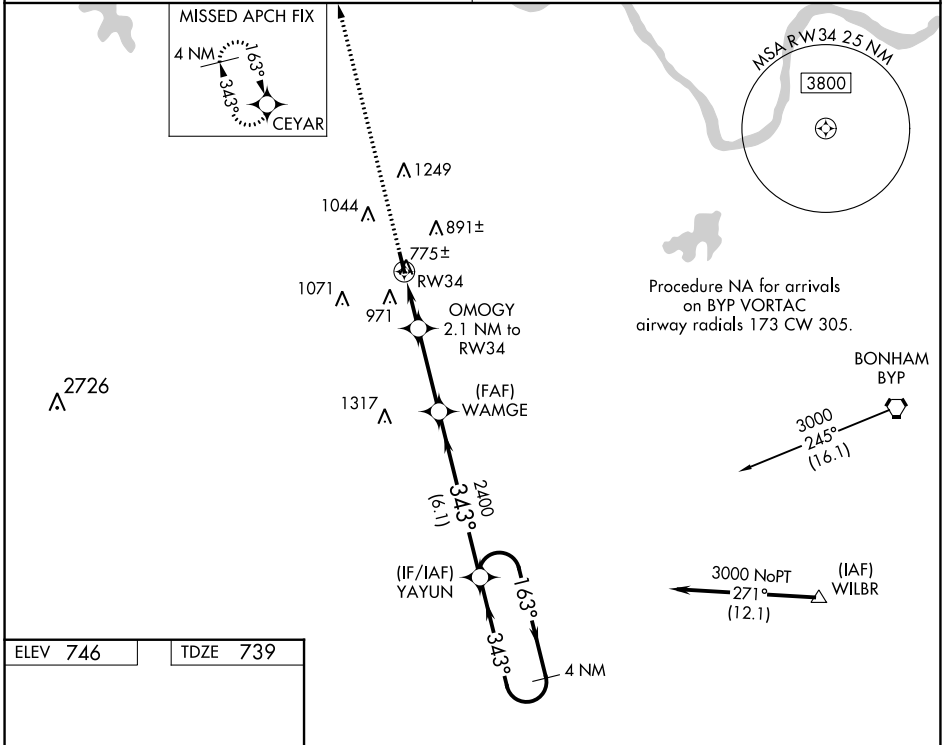
RNAV (GPS) RWY 34

SHERMAN MUNI (SWI)

NA DME/DME RNP-0.3 NA. Use Sherman/Denison altimeter setting, if not received, use Dallas Love Fld altimeter setting and increase all MDA 140 feet; increase LP and LNAV Cat C visibility 3/8 mile, Circling Cat B visibility 1/4 mile and Cat C visibility 1/2 mile. Procedure NA at night. Helicopter visibility reduction below 1 SM NA.

MISSED APPROACH:
Climb to 3000 direct CEYAR and hold.

| | |
|--|---------------------------------|
| FORT WORTH CENTER 124.75 323.0 | UNICOM 122.8 (CTAF) 0 |
|--|---------------------------------|



| CATEGORY | A | B | C | D |
|-------------------|-----------------------|-----------------------|-------------------------------|----|
| LP MDA | 1060-1 321 (400-1) | | | NA |
| LNAV MDA | 1100-1 | 361 (400-1) | 1100-1 1/8 361 (400-1 1/8) | NA |
| C CIRCLING | 1300-1 554 (600-1) | 1420-1 674 (700-1) | 1620-2 1/2 874 (900-2 1/2) | NA |

SC-2, 09 SEP 2021 to 07 OCT 2021

SC-2, 09 SEP 2021 to 07 OCT 2021