

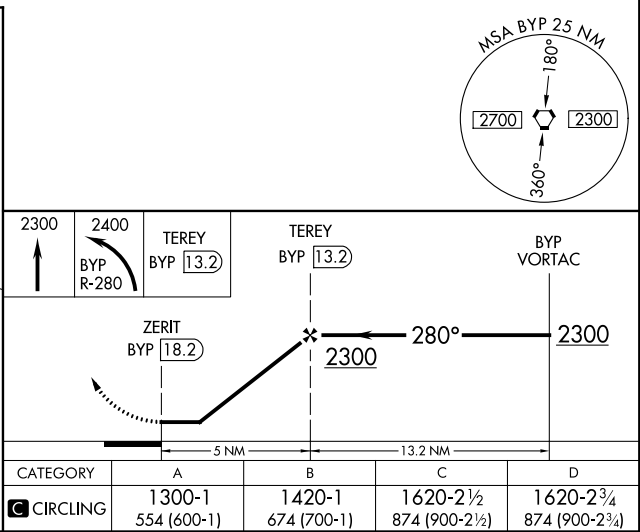
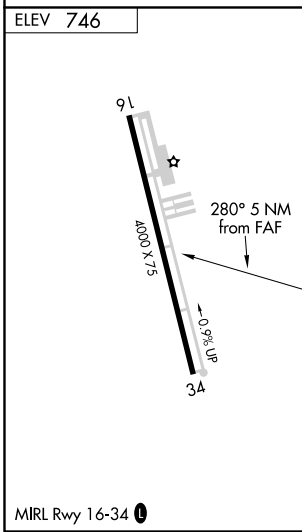
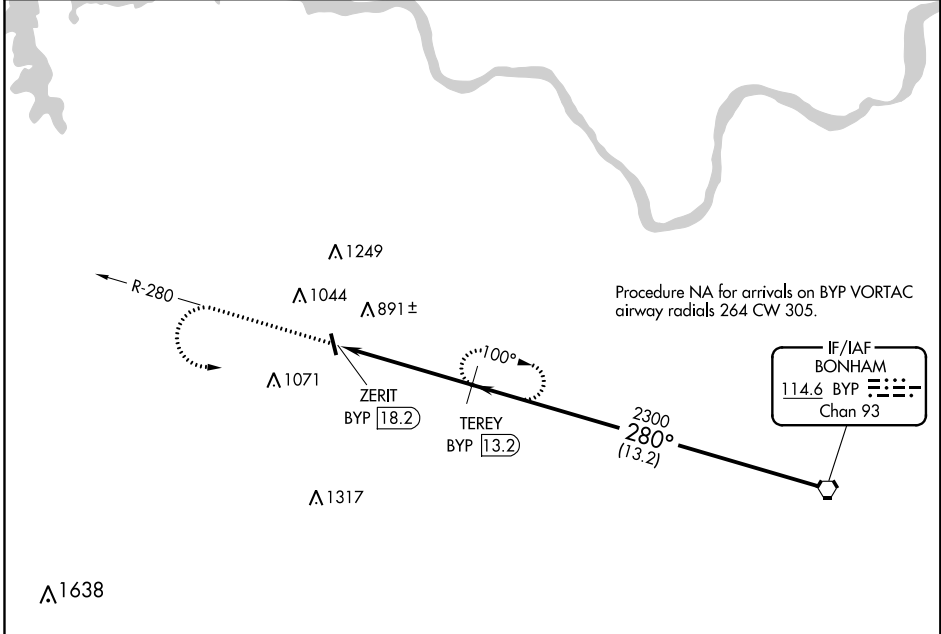
VORTAC BYP <b>114.6</b> Chan <b>93</b>	APP CRS <b>280°</b>	Rwy Idg TDZE Apt Elev	<b>N/A</b> <b>N/A</b> <b>746</b>
--	------------------------	-----------------------------	--

**VOR/DME-A**  
SHERMAN MUNI (SWI)

**⚠** Use Sherman/Denison altimeter setting, when not received, use Dallas Love Fld altimeter setting and increase all MDA 140 feet, increase visibility Cat B ¼ mile, Cat C ½ mile, and Cat D ¼ mile. Procedure NA at night.  
**⚠ NA** Helicopter visibility reduction below 1 SM NA.

**MISSED APPROACH:** Climb to 2300, then climbing left turn to 2400 on BYP R-280 to TEREY/13.2 DME and hold.

FORT WORTH CENTER <b>124.75 323.0</b>	UNICOM <b>122.8 (CTAF) 0</b>
--	---------------------------------



SC-2, 09 SEP 2021 to 07 OCT 2021

SC-2, 09 SEP 2021 to 07 OCT 2021