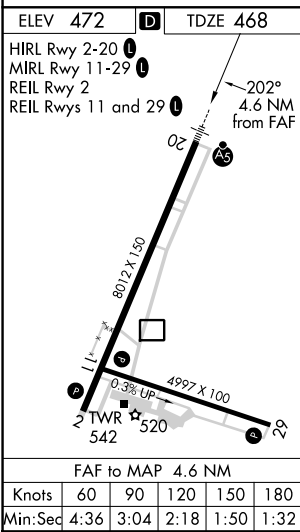
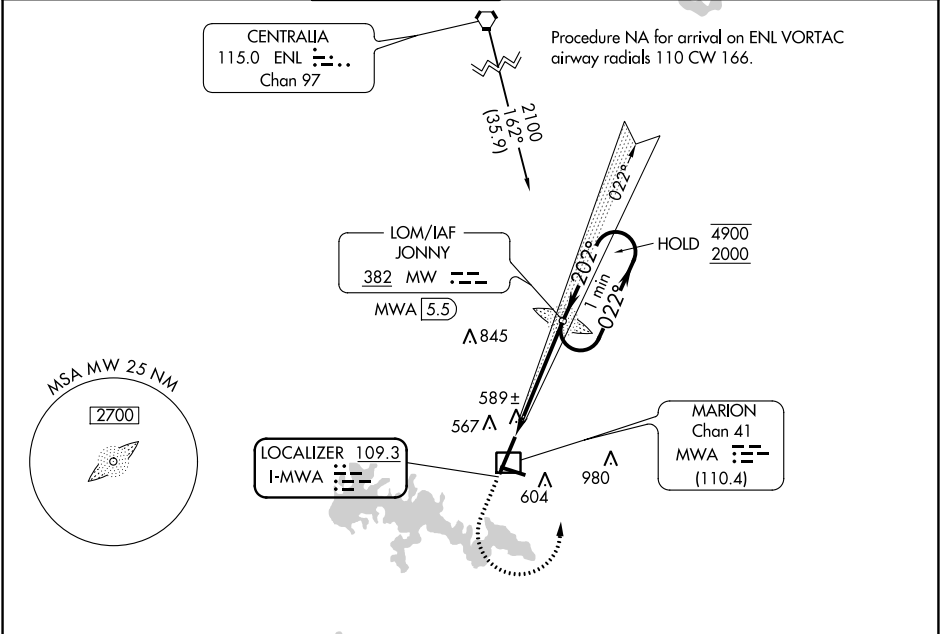


LOC I-MWA <b>109.3</b>	APP CRS <b>202°</b>	Rwy Idg <b>8012</b> TDZE <b>468</b> Apt Elev <b>472</b>
---------------------------	------------------------	---

# ILS or LOC RWY 20

VETERANS AIRPORT OF SOUTHERN ILLINOIS (MWA)

DME required. ADF required.		MALSR	MISSED APPROACH: Climb to 1500 then climbing left turn to 2000 direct JONNY LOM/MWA 5.5 DME and hold.		
⚠ Circling Rwy 11 NA at night. For inop ALS, increase S-LOC 20 ⚠ Cat C/D visibilities to 1 SM.			AWOS-3 <b>119.675</b>	KANSAS CITY CENTER <b>127.475 346.275</b>	MARION TOWER ★ <b>128.4 (CTAF) 0</b>
		CLNC DEL <b>127.475</b> (When twr closed)	GND CON <b>121.7</b>	UNICOM <b>122.95</b>	



ELEV <b>472</b>	TDZE <b>468</b>	1500 2000 MW MW LOM MWA <b>5.5</b>		One Minute Holding Pattern 1990 022° → 4900 ← 202° 2000 GS 3.00° TCH 50
HIRL Rwy 2-20 MIRL Rwy 11-29 REIL Rwy 2 REIL Rwy 11 and 29		* LOC only. * MWA <b>1.9</b>		
FAF to MAP 4.6 NM Knots: 60 90 120 150 180 Min:Sec: 4:36 3:04 2:18 1:50 1:32		1 NM    3.6 NM		
CATEGORY	A	B	C	D
S-ILS 20	668-½		200 (200-½)	
S-LOC 20	840-½	372 (400-½)	840-⅝	372 (400-⅝)
CIRCLING	920-1 448 (500-1)	940-1 468 (500-1)	1040-1½ 568 (600-1½)	1340-2¾ 868 (900-2¾)

EC-3, 09 SEP 2021 to 07 OCT 2021

EC-3, 09 SEP 2021 to 07 OCT 2021