

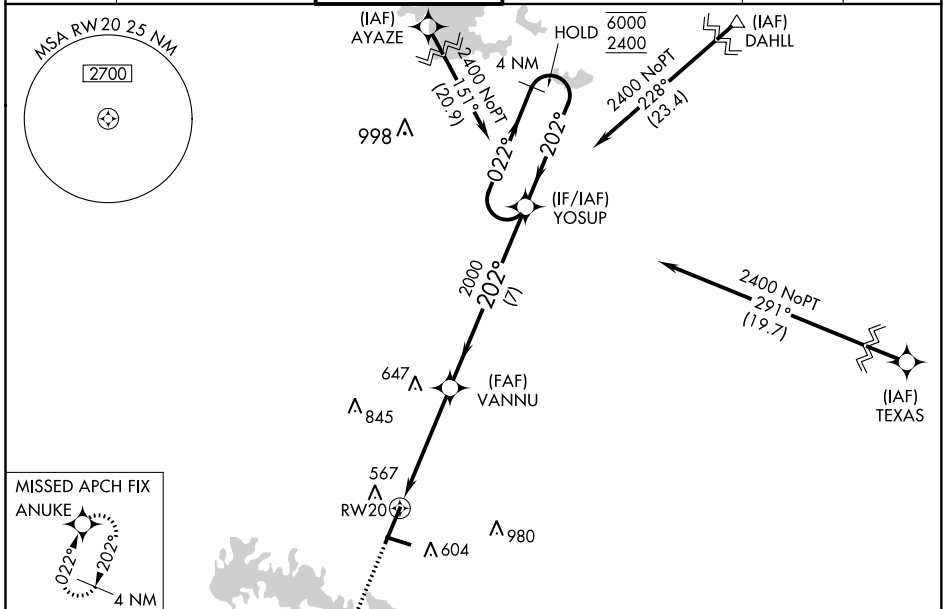
WAAS CH 57904 W20A	APP CRS 202°	Rwy Idg TDZE Apt Elev	8012 468 472
--	------------------------	-----------------------------	---

RNAV (GPS) RWY 20

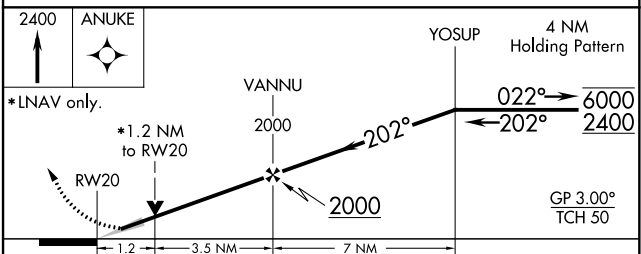
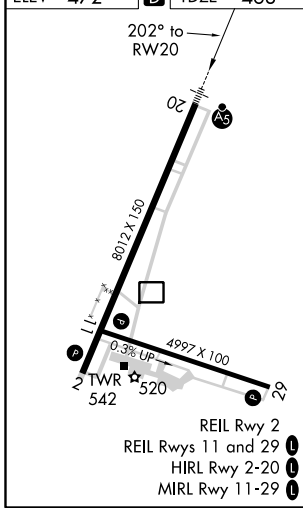
VETERANS AIRPORT OF SOUTHERN ILLINOIS (MWA)

RNP APCH.	MALSRL	MISSED APPROACH: Climb to 2400 direct ANUKE and hold.
<p>⚠ Circling Rwy 11 NA at night. For uncompensated Baro-VNAV systems, LNAV/VNAV NA below -15°C or above 54°C. For inop ALS, increase LNAV/VNAV all Cats visibility to 7/8 SM and LNAV Cats C/D visibility to 1 1/8 SM.</p>		

AWOS-3 119.675	KANSAS CITY CENTER 127.475 346.275	MARION TOWER★ 128.4 (CTAF)	CLNC DEL 127.475 (When twr closed)	GND CON 121.7	UNICOM 122.95
--------------------------	--	--------------------------------------	--	-------------------------	-------------------------



ELEV 472	D	TDZE 468
-----------------	----------	-----------------



CATEGORY	A	B	C	D
LPV DA		668-1/2	200 (200-1/2)	
LNAV/VNAV DA		773-1/2	305 (400-1/2)	
LNAV MDA	880-1/2	412 (500-1/2)	880-3/4	412 (500-3/4)
CIRCLING	920-1 448 (500-1)	940-1 468 (500-1)	1040-1 1/2 568 (600-1 1/2)	1340-2 3/4 868 (900-2 3/4)

EC-3, 09 SEP 2021 to 07 OCT 2021

EC-3, 09 SEP 2021 to 07 OCT 2021