

# AIRPORT DIAGRAM

AL-5240 (FAA)

UNIVERSITY PARK (UNV)  
STATE COLLEGE, PENNSYLVANIA

D-ATIS  
127.65  
UNIVERSITY PARK ★  
128.475  
GND CON  
119.625  
CLNC DEL  
119.625  
118.55 (When Tower Closed)

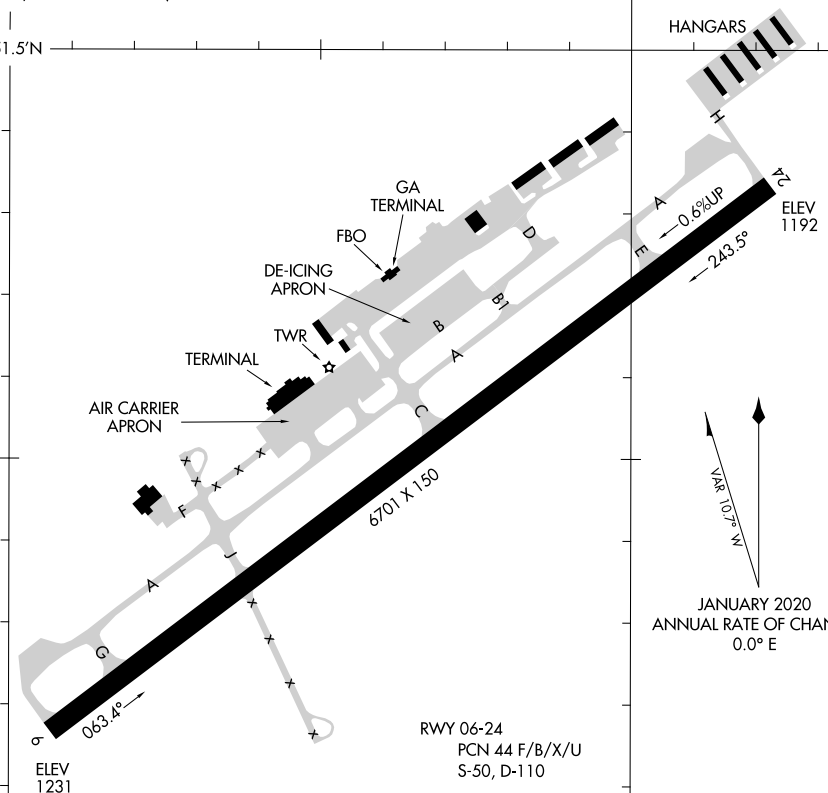
**D**

FIELD ELEV 1231
-----------------------

40°51.5'N

HANGARS

NE-4, 09 SEP 2021 to 07 OCT 2021



NE-4, 09 SEP 2021 to 07 OCT 2021

40°50.5'N

CAUTION: BE ALERT TO RUNWAY CROSSING CLEARANCES.  
READBACK OF ALL RUNWAY HOLDING INSTRUCTIONS IS REQUIRED.

RWY 06-24  
PCN 44 F/B/X/U  
S-50, D-110

77°51.5'W

77°50.5'W

# AIRPORT DIAGRAM

STATE COLLEGE, PENNSYLVANIA  
UNIVERSITY PARK (UNV)