


LOC IUNV 111.7	APP CRS 244°	Rwy Idg TDZE Apt Elev	6701 1218 1231
--------------------------	------------------------	-----------------------------	---

ILS or LOC RWY 24

UNIVERSITY PARK (UNV)

ADF required for procedure entry.


V Circling NA NW of Rwy 6-24. When local altimeter setting not received, use Clearfield altimeter setting: increase S-ILS 24 DA to 1524 feet; increase all MDAs 120 feet and visibility S-LOC 24 Cats C and D 3/8 SM and Circling Cat C 1/2 SM. For inop ALS when using Clearfield altimeter setting, increase S-ILS 24 all Cats visibility to 3/8 SM and S-LOC 24 Cats C/D to 1/2 SM.


MALSR 

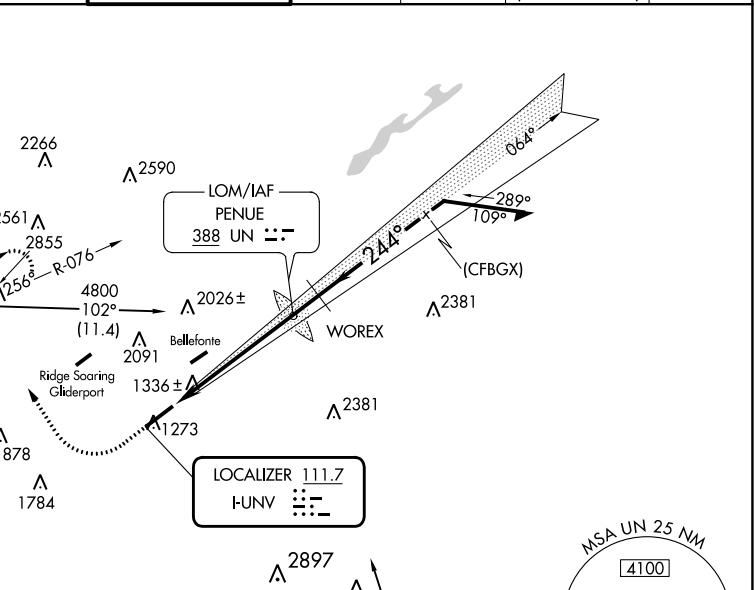
MISSED APPROACH: Climb to 2600 then climbing right turn to 4000 direct PSB VORTAC and hold.

D-ATIS 127.65	NEW YORK CENTER 134.8 338.3	UNIVERSITY PARK ★ 128.475 (CTAF) 0	GND CON 119.625	CLNC DEL 119.625	CLNC DEL 118.55 (When twr closed)	UNICOM 122.95
-------------------------	---------------------------------------	---	---------------------------	----------------------------	--	-------------------------

ALTERNATE MISSED APCH FIX

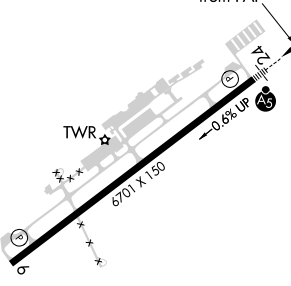


PENUE UN 
388

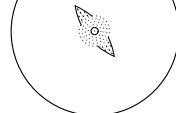
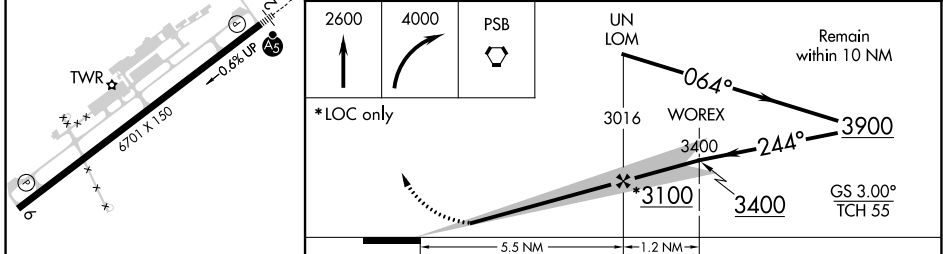


ELEV 1231	D	TDZE 1218
-----------	----------	-----------

244° 5.5 NM from FAF



Procedure NA for arrivals at RASHE INT on V106 southwest bound.

REIL Rwy 6 0	HIRL Rwy 6-24 0	FAF to MAP 5.5 NM			
Knots	60	90	120	150	180
Min:Sec	5:30	3:40	2:45	2:12	1:50
C CIRCLING	1640-1 409 (500-1)	1700-1 469 (500-1)	1940-2 709 (800-2)	2580-3 1349 (1400-3)	

NE-4, 09 SEP 2021 to 07 OCT 2021

NE-4, 09 SEP 2021 to 07 OCT 2021