

WAAS CH 61309 W24A	APP CRS 244°	Rwy Idg TDZE Apt Elev	6701 1218 1231
--	------------------------	-----------------------------	---

RNAV (GPS) RWY 24

UNIVERSITY PARK (UNV)

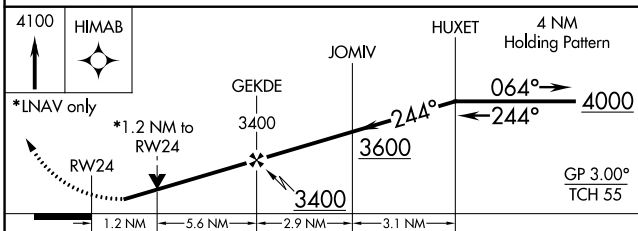
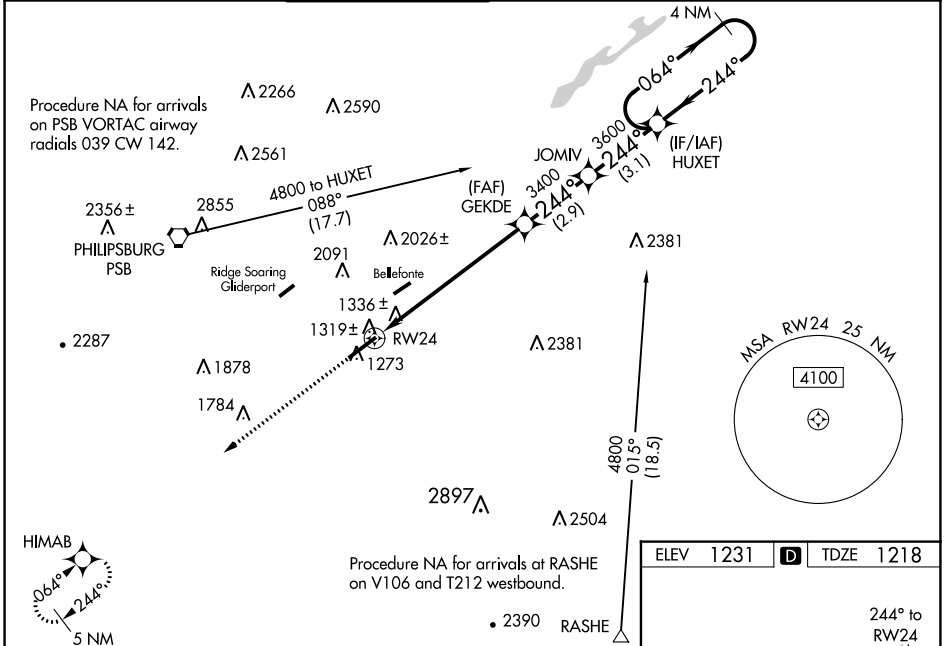
RNP APCH.

For uncompensated Baro-VNAV systems, LNAV/VNAV NA below -17°C (2°F) or above 54°C (130°F). Baro-VNAV and VDP NA when using Clearfield altimeter setting. When local altimeter setting not received, use Clearfield altimeter setting; increase LPV DA to 1524 feet and LNAV/VNAV DA to 1725 feet and visibility LNAV/VNAV all Cats ¼ SM; increase all MDAs 120 feet and visibility LNAV Cats C/D ¾ SM and Circling Cat C ½ SM. For inop ALS, increase LNAV/VNAV all Cats visibility to 1 ½ SM. For inop ALS when using Clearfield altimeter setting, increase LPV all Cats visibility to ¾ SM and LNAV/VNAV all Cats to 1 ½ SM. Circling NA NW of Rwy 6-24.

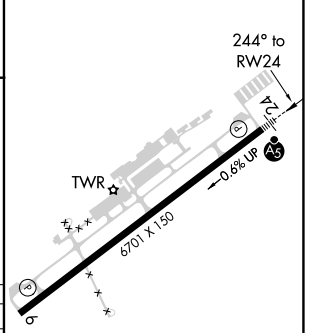
MALSR

MISSED APPROACH: Climb to 4100 direct HIMAB and hold.

D-ATIS 127.65	NEW YORK CENTER 134.8 338.3	UNIVERSITY PARK * 128.475 (CTAF)	GND CON 119.625	CLNC DEL 119.625	CLNC DEL 118.55 (When twr closed)	UNICOM 122.95
-------------------------	---------------------------------------	---	---------------------------	----------------------------	--	-------------------------



ELEV	1231		TDZE	1218
------	------	--	------	------



CATEGORY	A	B	C	D
LPV DA		1418-½	200 (200-½)	
LNAV/VNAV DA		1619-¾	401 (400-¾)	
LNAV MDA	1640-½	422 (500-½)	1640-¾	422 (500-¾)
CIRCLING	1640-1 409 (500-1)	1700-1 469 (500-1)	1940-2 709 (800-2)	2580-3 1349 (1400-3)

REIL Rwy 6

HIRL Rwy 6-24

NE-4, 09 SEP 2021 to 07 OCT 2021

NE-4, 09 SEP 2021 to 07 OCT 2021