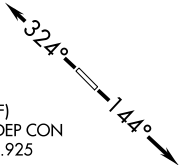


JDUBB FOUR DEPARTURE (RNAV)

AWOS-3
124.85
CLNC DEL
126.15
UNICOM
122.7 (CTAF)
POTOMAC DEP CON
120.45 306.925



**TOP ALTITUDE:
3000**

DEPARTURE ROUTE DESCRIPTION

TAKEOFF RUNWAY 14: Climb on heading 144° or as assigned by ATC. Expect RADAR vectors to HAFNR, then on track 225° to JDUBB, thence. . . .

TAKEOFF RUNWAY 32: Climb on heading 324° or as assigned by ATC. Expect RADAR vectors to HAFNR, then on track 225° to JDUBB, thence. . . .

. . . . on assigned transition. Maintain 3000. Expect clearance to filed altitude within ten (10) minutes after departure.

MELTN TRANSITION (JDUBB4.MELTN)

RRSIN TRANSITION (JDUBB4.RRSIN)

P-56B

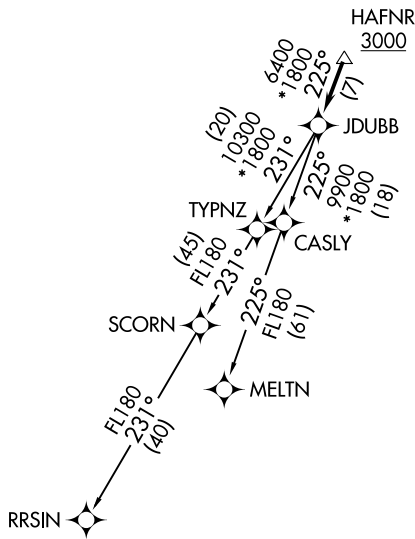


P-56A



NE-3, 09 SEP 2021 to 07 OCT 2021

NE-3, 09 SEP 2021 to 07 OCT 2021



- NOTE: RNAV 1.
- NOTE: RADAR required.
- NOTE: DME/DME/IRU or GPS required.
- NOTE: Turbo-jets only.
- NOTE: Takeoff Rwy 32 requires a climb to 2500 on heading 341° before proceeding on the ATC assigned heading for obstacle avoidance.

TAKEOFF MINIMUMS

Rwy 14: Standard
Rwy 32: Standard with minimum climb of 240' per NM to 1900.

NOTE: Chart not to scale.