

RNAV (GPS) RWY 14

WINCHESTER RGNL (OKV)

WAAS CH 70712 W14A	APP CRS 144°	Rwy Idg TDZE Apt Elev	5498 726 726
--	------------------------	-----------------------------	---

RNP APCH.

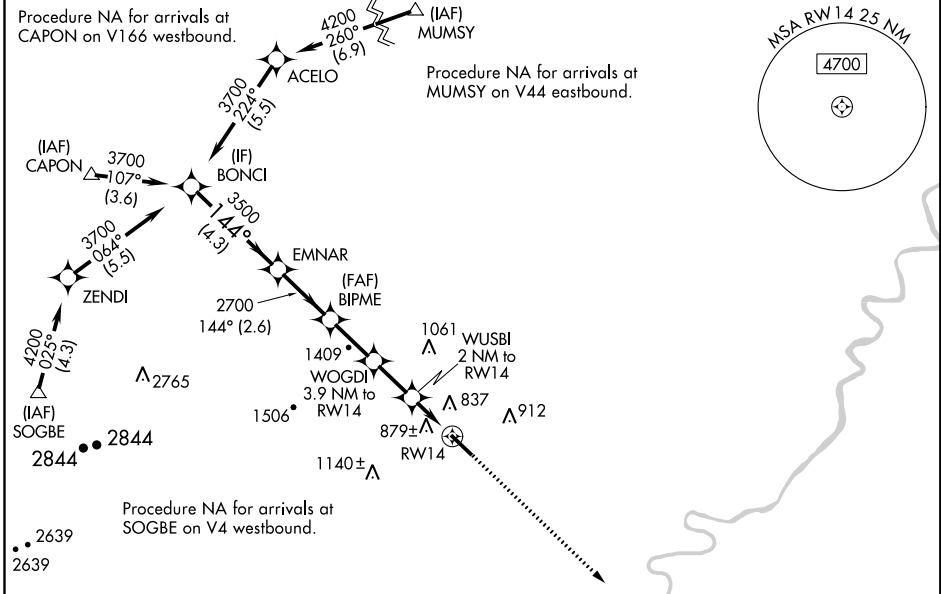
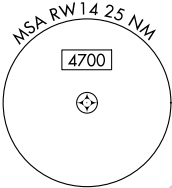
⚠ Baro-VNAV and VDP NA when using Martinsburg altimeter setting. Rwy 14 helicopter visibility reduction below $\frac{3}{4}$ SM NA. For uncompensated Baro-VNAV systems, LNAV/VNAV NA below -16°C or above 54°C. When local altimeter setting not received, use Martinsburg altimeter setting: increase all DA 63 feet and all MDA 80 feet; increase LPV all Cats and LNAV/VNAV Cats A/B visibility $\frac{1}{8}$ SM; increase LNAV Cats C/D and Circling Cats C/D visibility $\frac{1}{4}$ SM.

MISSED APPROACH:
Climb to 3700 direct CLADD and hold, continue climb-in-hold to 3700.

AWOS-3 124.85	POTOMAC APP CON 120.45 306.925	CLNC DEL 126.15	UNICOM 122.7 (CTAF) 0
-------------------------	--	---------------------------	---------------------------------

Procedure NA for arrivals at CAPON on V166 westbound.

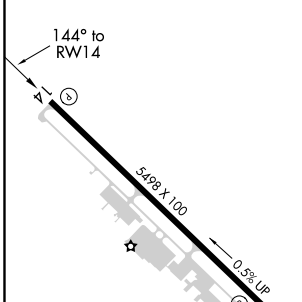
Procedure NA for arrivals at MUMSY on V44 eastbound.



NE-3, 09 SEP 2021 to 07 OCT 2021

NE-3, 09 SEP 2021 to 07 OCT 2021

ELEV 726	TDZE 726
----------	----------



REIL Rwy 14 0	HIRL Rwy 14-32 0
---------------	------------------

	BONCI	EMNAR	BIPME	WOGDI	WUSBI	CLADD
	3700	3500	2700	2000	1400	3700
	GP 3.00°					
	TCH 45					
	4.3 NM	2.6 NM	2.2 NM	1.9 NM	0.8 NM	1.2 NM
CATEGORY	A	B	C	D		
LPV DA	976- $\frac{3}{4}$				250 (300- $\frac{3}{4}$)	
LNAV/VNAV DA	1060-1	334 (400-1)	1060-1 $\frac{1}{8}$	334 (400-1 $\frac{1}{8}$)		
LNAV MDA	1140-1	414 (500-1)	1140-1 $\frac{1}{8}$	414 (500-1 $\frac{1}{8}$)		
C CIRCLING	1180-1	1220-1	1380-1 $\frac{3}{4}$	1480-2 $\frac{1}{2}$		
	454 (500-1)	494 (500-1)	654 (700-1 $\frac{3}{4}$)	754 (800-2 $\frac{1}{2}$)		