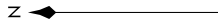


NE-3, 09 SEP 2021 to 07 OCT 2021

AWOS-3
124.85
CLNC DEL
126.15
(CTAF)
122.7
POTOMAC DEP CON
120.45 306.925

TOP ALTITUDE:
3000



▼ DEPARTURE ROUTE DESCRIPTION

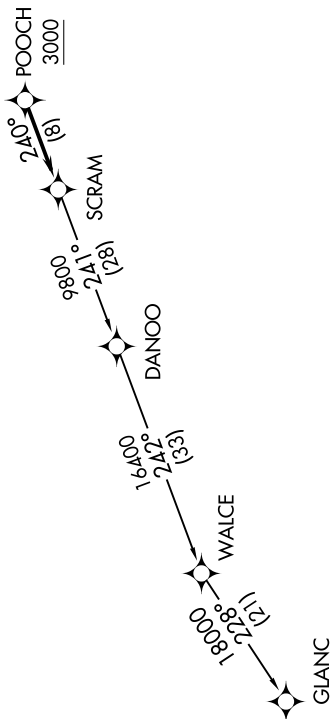
Climb on heading assigned by ATC, expect RADAR vectors to POOCH, then on track 240° to SCRAM, thence. . . .
. . . . as depicted. Maintain 3000, expect clearance to filed altitude within ten (10) minutes after departure.

TAKEOFF MINIMUMS

Rwy 14: Standard.
Rwy 32: Standard with minimum climb of 240° per NM to 1900.

GLANC TRANSITION (SCRAM6.GLANC):

NOTE: RNAV 1.
NOTE: RADAR required.
NOTE: DME/DME/IRU or GPS required.
NOTE: Turbo-jets only.
NOTE: Takeoff Rwy 32 requires a climb to 2500 on heading 34.1° before proceeding on the ATC assigned heading for obstacle avoidance.



NOTE: Chart not to scale.

NE-3, 09 SEP 2021 to 07 OCT 2021