

WAAS CH 82405 W19A	APP CRS 184°	Rwy Idg TDZE Apt Elev	6501 769 772
----------------------------------------	------------------------	-----------------------------	-----------------------------------------

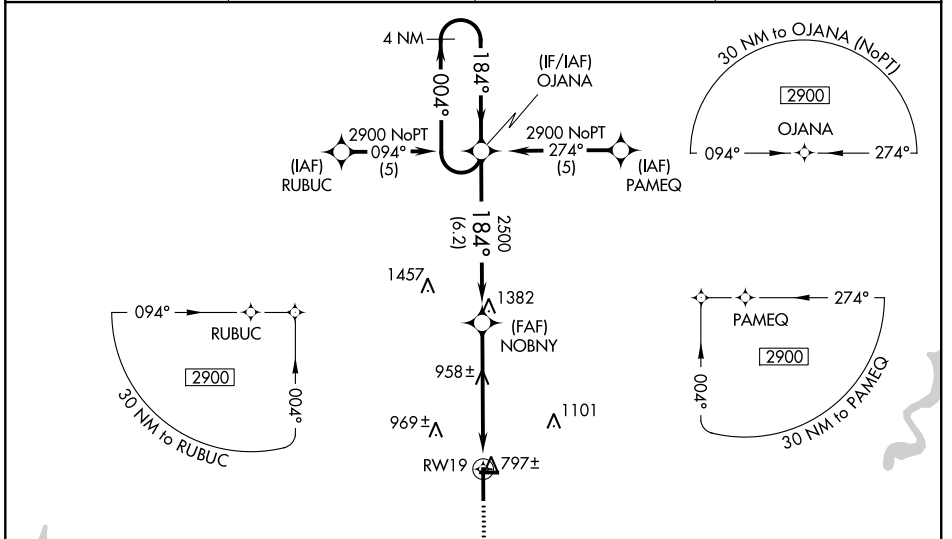
RNAV (GPS) RWY 19

FREMONT MUNI (F'FX)

Baro-VNAV NA when using Muskegon altimeter setting. For uncompensated Baro-VNAV systems, LNAV/VNAV NA below -16°C (4°F) or above 47°C (116°F). Rwy 19 helicopter visibility reduction below 3/4 SM NA. DME/DME RNP-0.3 NA. When local altimeter setting not received, use Muskegon altimeter setting and increase all DA 65 feet, and all visibilities 1/4 mile. Increase all MDA 80 feet, and Cat C/D visibilities 1/4 mile. VDP NA when using Muskegon altimeter setting.

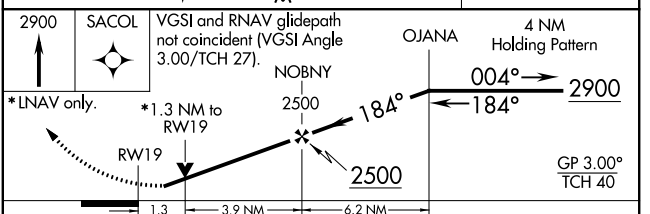
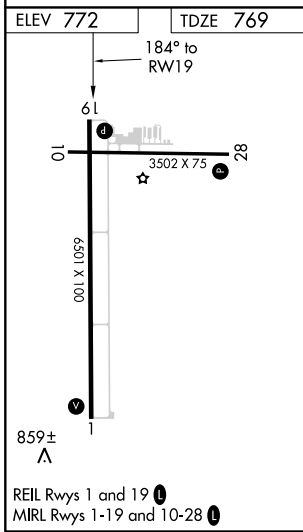
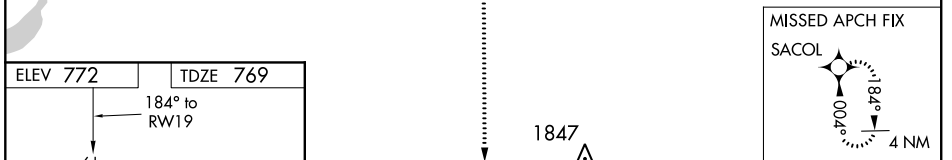
MISSED APPROACH:
Climb to 2900 direct SACOL and hold.

AWOS-3 118.775	GREAT LAKES APP CON ★ 119.8 290.35	CLNC DEL 118.25	UNICOM 123.0 (CTAF) 0
--------------------------	----------------------------------------------	---------------------------	----------------------------------------



EC-1, 09 SEP 2021 to 07 OCT 2021

EC-1, 09 SEP 2021 to 07 OCT 2021



CATEGORY	A	B	C	D
LPV DA		1074-1	305 (400-1)	
LNAV/VNAV DA		1295-2	526 (600-2)	
LNAV MDA	1220-1	451 (500-1)	1220-1¼ 451 (500-1¼)	1220-1½ 451 (500-1½)
CIRCLING	1260-1	488 (500-1)	1260-1½ 488 (500-1½)	1340-2 568 (600-2)