

| | | | |
|--|------------------------|-----------------------------|---|
| WAAS CH 61005 W21A | APP CRS 207° | Rwy ldg TDZE Apt Elev | 5008 980 996 |
|--|------------------------|-----------------------------|---|

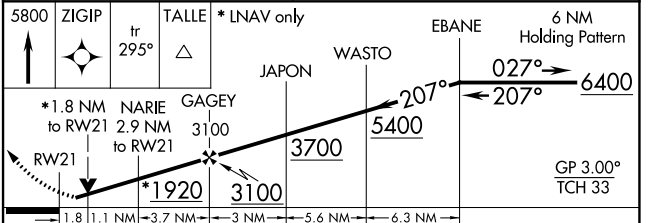
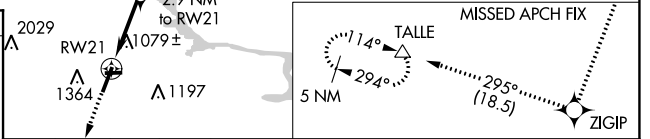
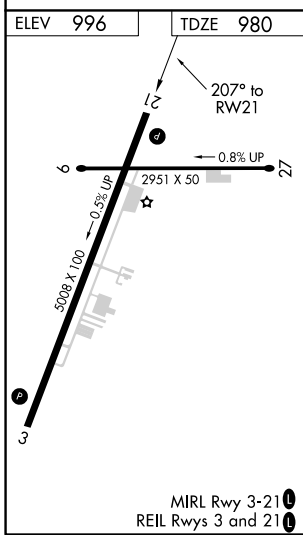
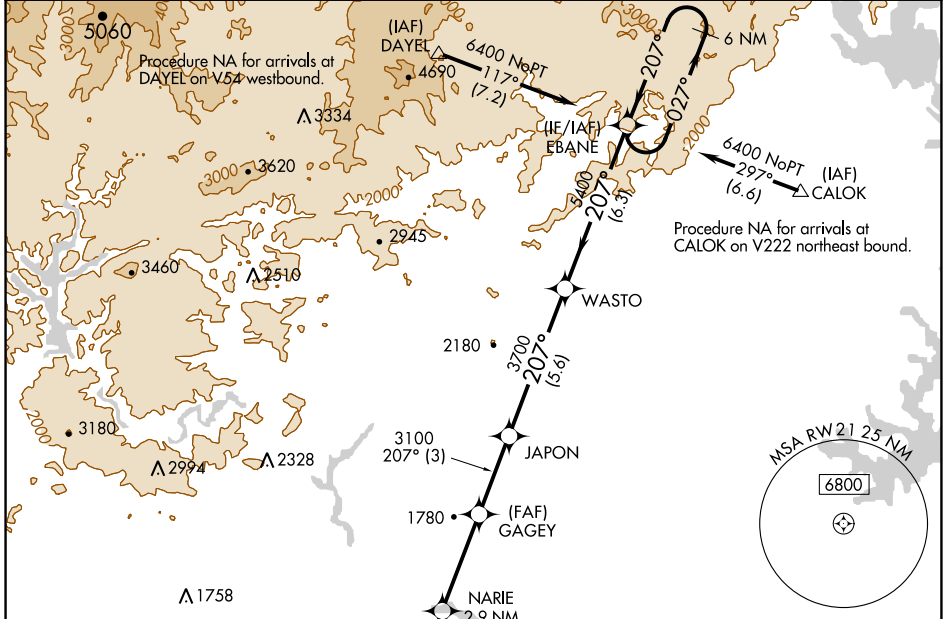
RNAV (GPS) RWY 21

TOCCOA RG LETOURNEAU FIELD (TOC)

RNP APCH:
 ▼ Baro-VNAV and VDP NA when using Gainesville altimeter setting. For uncompensated Baro-VNAV systems, LNAV/VNAV NA below -8°C or above 54°C. When local altimeter setting not received, use Gainesville climeter setting: Increase LPV DA to 1345 feet, LNAV/VNAV DA to 1510 feet, and increase all MDAs 120 feet, increase LNAV/LNAV visibility all Cats ½ SM, LNAV visibility Cats C/D ¾ SM and Circling visibility Cats A/B ½ SM and Cat C ½ SM. Circling Rwy 9, 27 NA at night.

MISSED APPROACH:
 Climb to 5800 direct ZIGIP and on track 295° to TALLE and hold, continue climb-in-hold to 5800.

| | | |
|--------------------------|---------------------------------------|---------------------------------|
| AWOS-3 119.625 | ATLANTA CENTER 134.8 379.95 | UNICOM 122.8 (CTAF) 0 |
|--------------------------|---------------------------------------|---------------------------------|



| CATEGORY | A | B | C | D |
|-----------------|--------|-------------|-------------------------|-------------------------|
| LPV DA | | 1230-1 | 250 (300-1) | |
| LNAV/VNAV DA | | 1395-1½ | | 415 (400-1½) |
| LNAV MDA | 1560-1 | 580 (600-1) | 1560-1½ | 580 (600-1½) |
| CIRCLING | 1720-1 | 724 (800-1) | 1760-2¼ 764 (800-2¼) | 2480-3 1484 (1500-3) |

SE-4, 09 SEP 2021 to 07 OCT 2021

SE-4, 09 SEP 2021 to 07 OCT 2021