

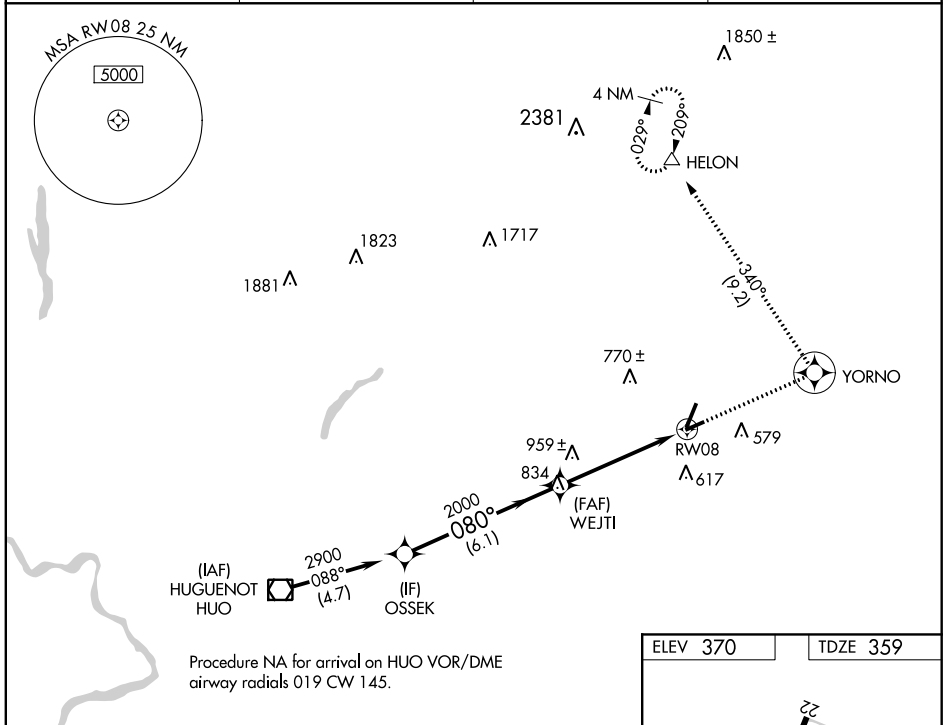
WAAS CH <b>50216</b> <b>W08A</b>	APP CRS <b>080°</b>	Rwy Idg TDZE Apt Elev	<b>3664</b> <b>359</b> <b>370</b>
--	------------------------	-----------------------------	---

# RNAV (GPS) RWY 8

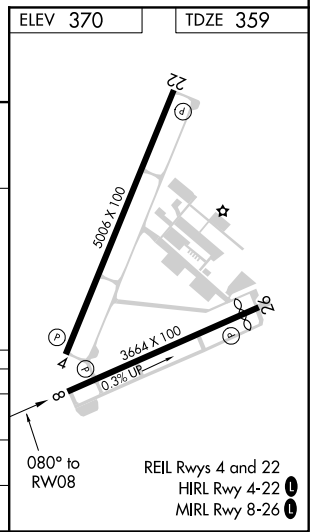
ORANGE COUNTY (MGJ)

RNP APCH.	MISSED APPROACH: Climb to 5300 direct YORNO and left turn on track 340° to HELON and hold, continue climb-in-hold to 5300.
<p><b>▼</b> Rwy 8 helicopter visibility reduction below 1 SM NA. Straight-in Rwy 8 NA at night, Circling Rwy 8, 22, 26 NA at night.</p>	

ASOS <b>119.275</b>	NEW YORK APP CON <b>132.75 363.1</b>	CLNC DEL <b>123.85</b>	UNICOM <b>122.725 (CTAF) 0</b>
------------------------	---	---------------------------	-----------------------------------



Procedure NA for arrival on HUO VOR/DME airway radials 019 CW 145.



VGSIs and RNAV glidepath not coincident (VGSIs Angle 3.50/TCH 49).				
OSSEK	WEJTI		RWY 08	
2900	2000		370	
088°		080°		tr 340°
6.1 NM		5 NM		
CATEGORY	A	B	C	D
LPV DA	1059-2½ 700 (700-2½)			
RNAV MDA	1220-1 861 (900-1)	1220-1¼ 861 (900-1¼)	1220-2½ 861 (900-2½)	1220-2¾ 861 (900-2¾)
CIRCLING	1220-1¼	850 (900-1¼)	1220-2½ 850 (900-2½)	1220-2¾ 850 (900-2¾)

NE-2, 09 SEP 2021 to 07 OCT 2021

NE-2, 09 SEP 2021 to 07 OCT 2021