

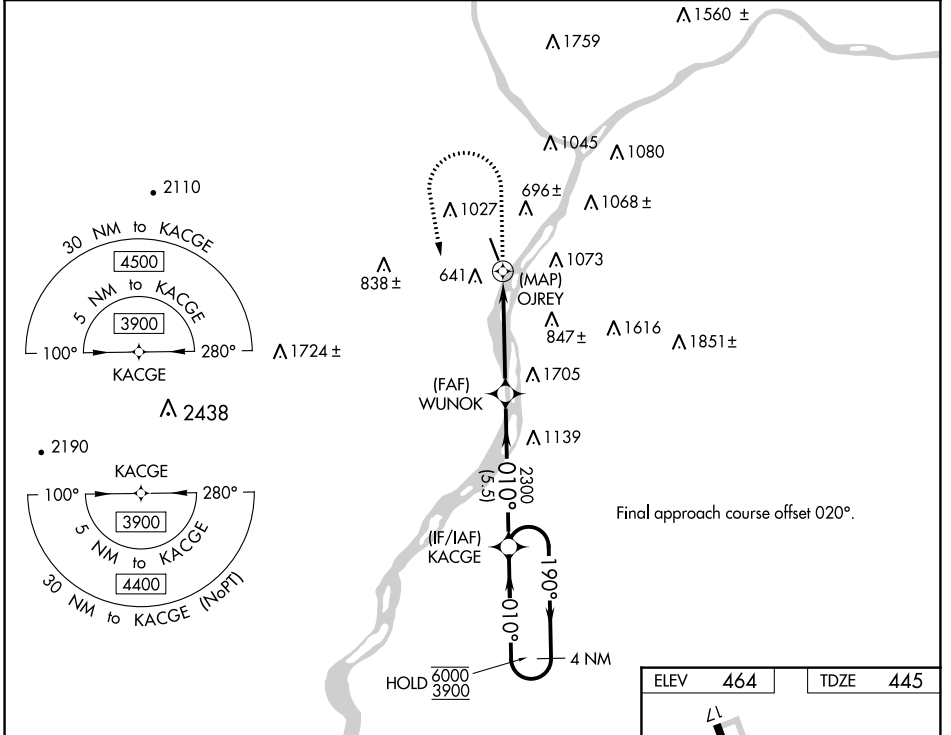
WAAS CH <b>49139</b> <b>W35A</b>	APP CRS <b>010°</b>	Rwy Idg TDZE Apt Elev	<b>4510</b> <b>445</b> <b>464</b>
--	------------------------	-----------------------------	---

# RNAV (GPS) RWY 35

PENN VALLEY (SE/G)

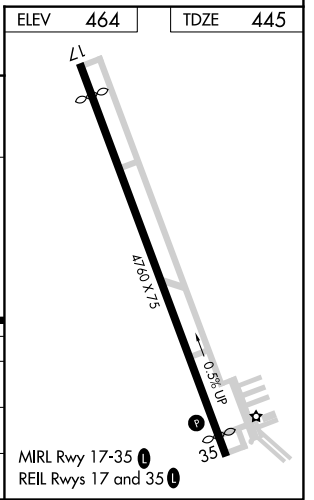
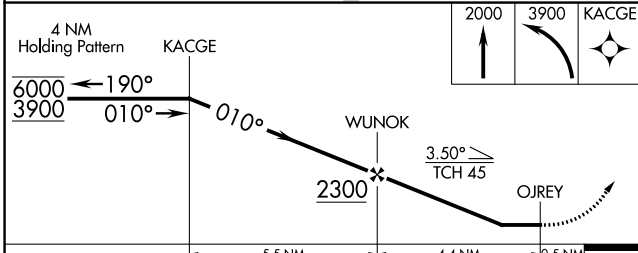
RNP APCH.   
 Circling Rwy 17 NA at night. Rwy 35 helicopter visibility reduction below 1 SM NA. Straight-In Rwy 35 at night, operational VGSI required, remain on or above VGSI glidepath until threshold.   
 MISSED APPROACH: Climb to 2000 then climbing left turn to 3900 direct KACGE and hold.   
 -15°C

ASOS <b>123.975</b>	HARRISBURG APP CON <b>118.25 269.45</b>	UNICOM <b>122.7 (CTAF) 0</b>
------------------------	--	---------------------------------



NE-4, 09 SEP 2021 to 07 OCT 2021

NE-4, 09 SEP 2021 to 07 OCT 2021



CATEGORY	A	B	C	D
LP MDA	1200-1 755 (800-1)	1200-1¼ 755 (800-1¼)	1200-2	755 (800-2)
LNAV MDA	1840-1¼ 1395 (1400-1¼)	1840-1½ 1395 (1400-1½)	1840-3	1395 (1400-3)
CIRCLING	1840-1¼ 1376 (1400-1¼)	1840-1½ 1376 (1400-1½)	1840-3	1376 (1400-3)