

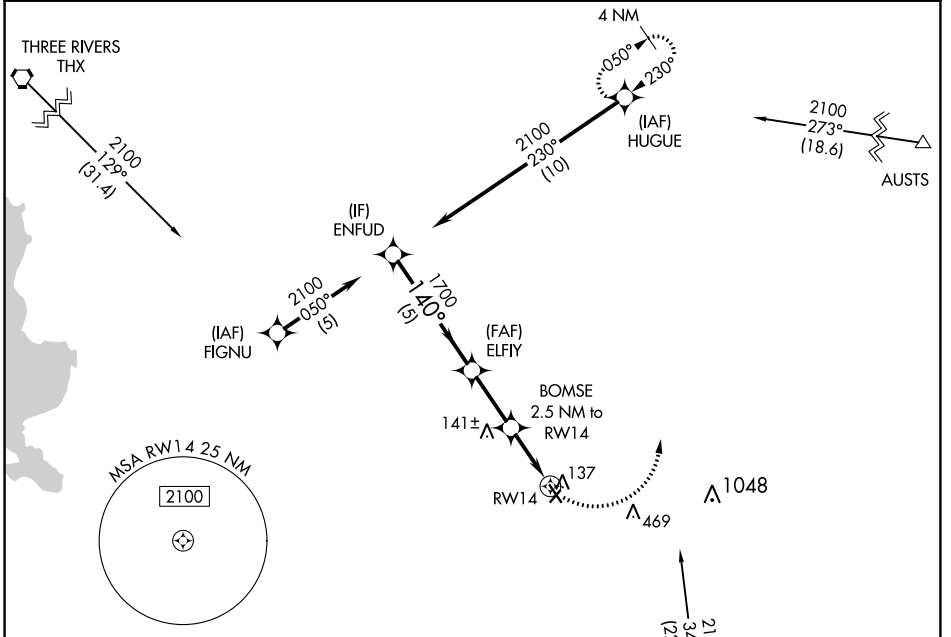
APP CRS	Rwy Idg	4073
140°	TDZE	48
	Apt Elev	48

RNAV (GPS) RWY 14

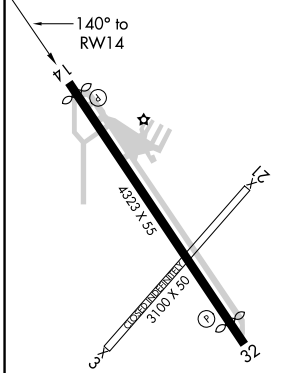
ALFRED C 'BUBBA' THOMAS (T69)

RNP APCH.	MISSED APPROACH: Climbing left turn to 2100 direct HUGUE and hold.
<p>▼ Procedure NA at night.</p> <p>▲ Rwy 14 helicopter visibility reduction below 1 SM NA.</p>	

AWOS-3 118.25	CORPUS APP CON 120.9 348.725	UNICOM 122.8 (CTAF) 0
-------------------------	--	---------------------------------



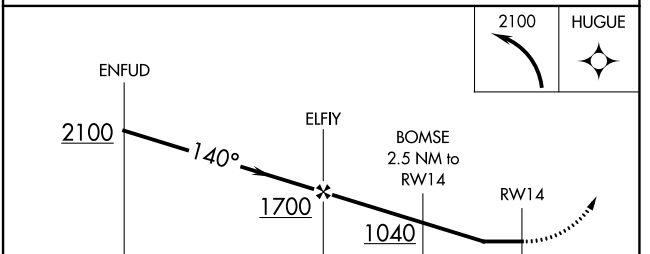
ELEV 48	TDZE 48
---------	---------



MIRL Rwy 14-32 0

REIL Rwy 14 and 32 0

Procedure NA for arrivals at CRP VORTAC on V20-70 southwest bound.



CATEGORY	A	B	C	D
LNAV MDA	480-1	432 (500-1)		NA
CIRCLING	620-1 572 (600-1)	720-1 672 (700-1)		NA

SC-3, 09 SEP 2021 to 07 OCT 2021

SC-3, 09 SEP 2021 to 07 OCT 2021