

SINTON, TEXAS

AL-5274 (FAA)

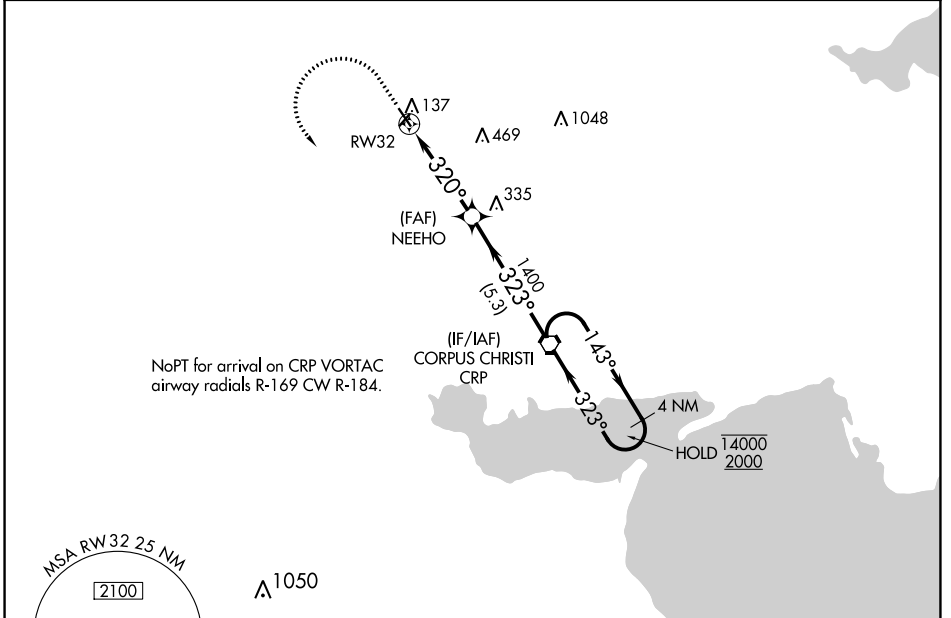
20366

APP CRS 320°	Rwy Idg 3923
	TDZE 48
	Apt Elev 48

RNAV (GPS) RWY 32

ALFRED C 'BUBBA' THOMAS (T69)

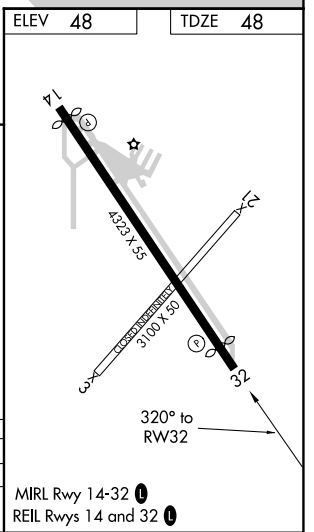
RNP APCH.		MISSED APPROACH: Climb to 1000 then climbing left turn to 2000 direct CRP VORTAC and hold.
<p>▼ Procedure NA at night.</p> <p>▲ Rwy 32 helicopter visibility reduction below 1 SM NA.</p>		
AWOS-3 118.25	CORPUS APP CON 120.9 348.725	UNICOM 122.8 (CTAF) 0



SC-3, 09 SEP 2021 to 07 OCT 2021

SC-3, 09 SEP 2021 to 07 OCT 2021

ELEV 48	TDZE 48			
1000	2000	CRP		
↑	↶	⬡		
<p>4 NM Holding Pattern</p> <p>CRP VORTAC</p> <p>NEEHO</p> <p>RW32</p> <p>320° → 1400</p> <p>143° → 1400</p> <p>← 323° 2000</p> <p>4 NM 5.3 NM</p>				
CATEGORY	A	B	C	D
LNAV MDA	520-1	472 (500-1)		NA
CIRCLING	620-1 572 (600-1)	720-1 672 (700-1)		NA



SINTON, TEXAS
Orig-B 31DEC20

28°02' N-97°33' W

ALFRED C 'BUBBA' THOMAS (T69)
RNAV (GPS) RWY 32