

SINTON, TEXAS

AL-5274 (FAA)

20366

VORTAC CRP 115.5	APP CRS 138°	Rwy ldg TDZE 48
Chan 102		Apt Elev 48

VOR RWY 14

ALFRED C 'BUBBA' THOMAS (T69)

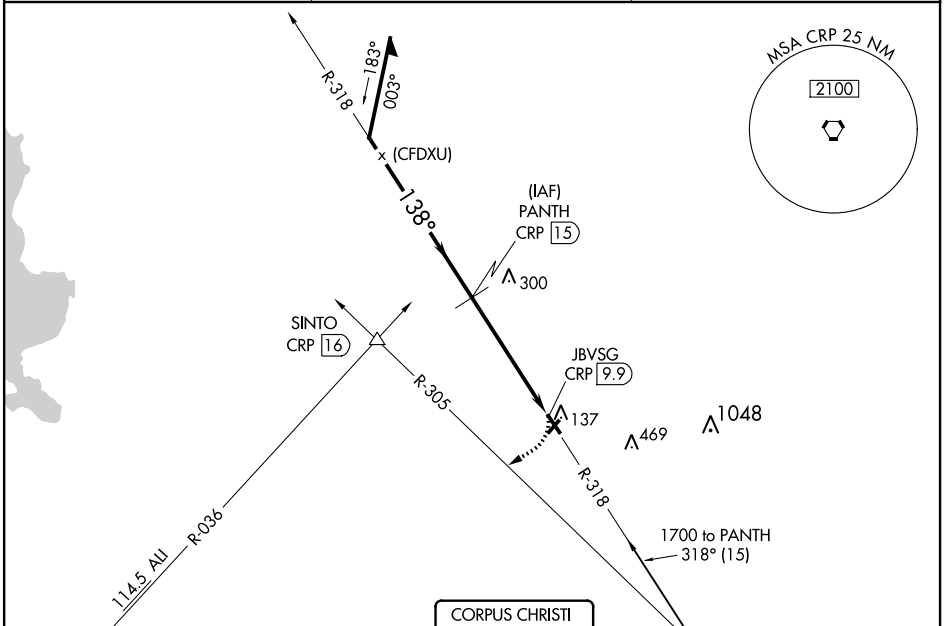
DME required.

Procedure NA at night.

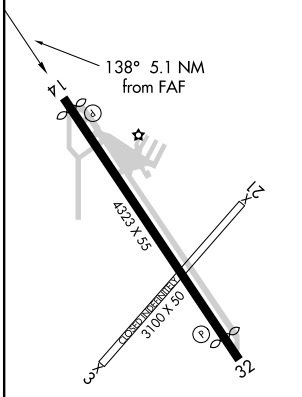
Rwy 14 helicopter visibility reduction below 1 SM NA.

MISSED APPROACH: Climbing right turn to 1800 on heading 230° and CRP VORTAC R-305 to SINTO INT/CRP 16 DME.

AWOS-3 118.25	CORPUS APP CON 120.9 348.725	UNICOM 122.8 (CTAF) 0
-------------------------	--	--



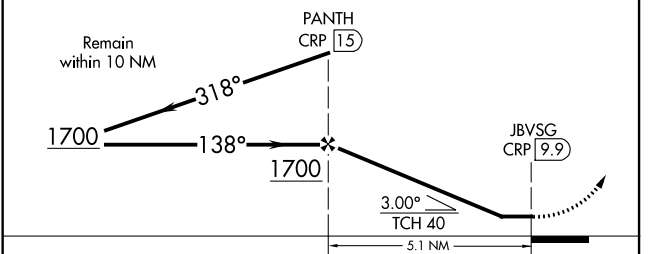
ELEV 48	TDZE 48
----------------	----------------



MIRL Rwy 14-32 0
REIL Rwy 14 and 32 0

VGSI and descent angles not coincident (VGSI Angle 3.00°/TCH 19).

1800 hdg 230°	CRP R-305	SINTO △
---------------------	--------------	------------



CATEGORY	A	B	C	D
S-14	640-1	592 (600-1)		NA
CIRCLING	640-1 592 (600-1)	720-1 672 (700-1)		NA

SINTON, TEXAS
Amdt 1C 31DEC20

28°02' N-97°33' W

ALFRED C 'BUBBA' THOMAS (T69)
VOR RWY 14

SC-3, 09 SEP 2021 to 07 OCT 2021

SC-3, 09 SEP 2021 to 07 OCT 2021