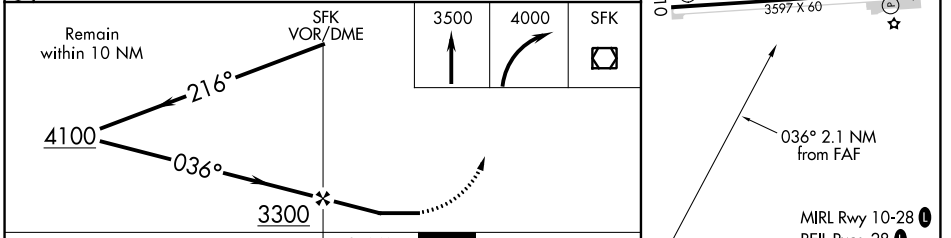
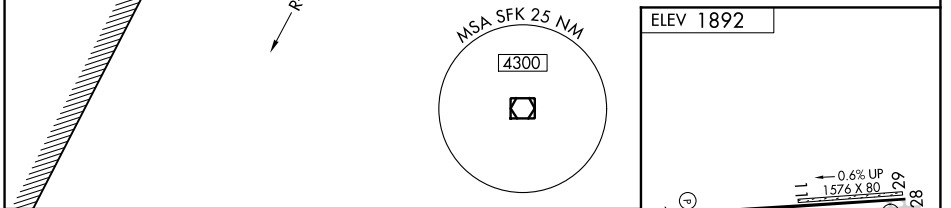
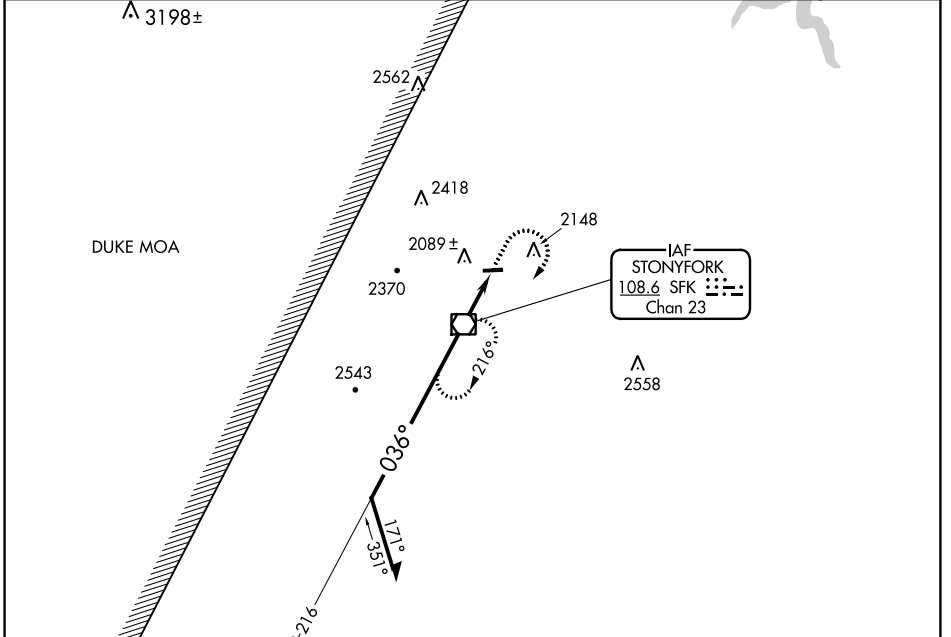


VOR/DME SFK 108.6 Chan 23	APP CRS 036°	Rwy Idg TDZE Apt Elev N/A N/A 1892
---	------------------------	--

VOR-A
WELLSBORO JOHNSTON (N38)

⚠ Circling NA to Rwy 11 and 29. Procedure NA at night. **MISSED APPROACH:** Climb to 3500 then climbing right turn to 4000 direct SFK VOR/DME and hold.

AWOS-3PT 120.925	ELMIRA APP CON ★ 128.425 257.8	UNICOM 122.8 (CTAF) 📻
----------------------------	--	--



CATEGORY	A	B	C	D	FAF to MAP 2.1 NM					
📻 CIRCLING	2940-1¼ 1048 (1100-1¼)	2940-1½ 1048 (1100-1½)	2940-3 1048 (1100-3)	NA	Knots	60	90	120	150	180
					Min:Sec	2:06	1:24	1:03	0:50	0:42

NE-4, 09 SEP 2021 to 07 OCT 2021

NE-4, 09 SEP 2021 to 07 OCT 2021