

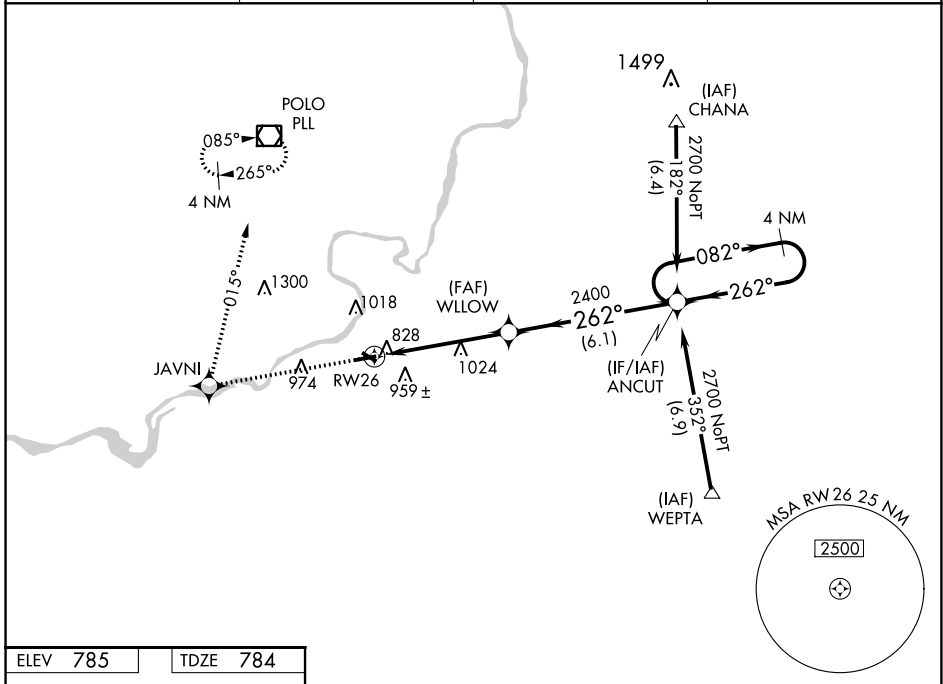
WAAS CH 65712 W26A	APP CRS 262°	Rwy Idg TDZE Apt Elev	3897 784 785
--	------------------------	-----------------------------	---

RNAV (GPS) RWY 26

DIXON MUNI-CHARLES R WALGREEN FLD (C73)

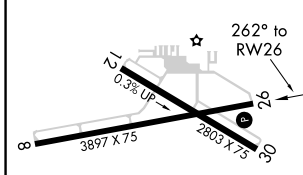
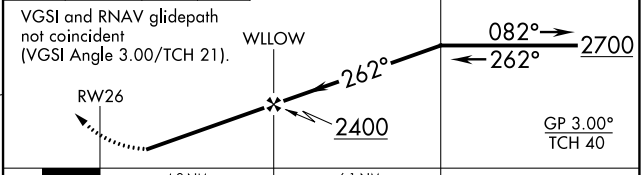
RNP APCH.	Baro-VNAV NA. Rwy 26 helicopter visibility reduction below 3/4 SM NA. When local altimeter setting not received, use Rochelle altimeter setting.	MISSED APPROACH: Climb to 2700 direct JAVNI and right turn via track 015° to PLL VOR/DME and hold.
-----------	---	--

AWOS-AV 118.575	RPJ AWOS-3 125.2	ROCKFORD APP CON 126.0 327.0	UNICOM 123.05 (CTAF) 0
---------------------------	----------------------------	--	----------------------------------



ELEV 785	TDZE 784
-----------------	-----------------

2700	JAVNI	PLL	4 NM Holding Pattern
↑	✦	tr 015°	□



	A	B	C	D
CATEGORY	A	B	C	D
LPV DA	1107-1 1/4	323 (400-1 1/4)		NA
LNAV/VNAV DA	1377-2	593 (600-2)		NA
LNAV MDA	1340-1	556 (600-1)	1340-1 1/2 556 (600-1 1/2)	NA
CIRCLING	1500-1 715 (800-1)	1520-1 735 (800-1)	1520-2 735 (800-2)	NA

REIL Rwy 8 0
MIRL Rwy 8-26 and 12-30 0

RNAV (GPS) RWY 26

EC-3, 09 SEP 2021 to 07 OCT 2021

EC-3, 09 SEP 2021 to 07 OCT 2021