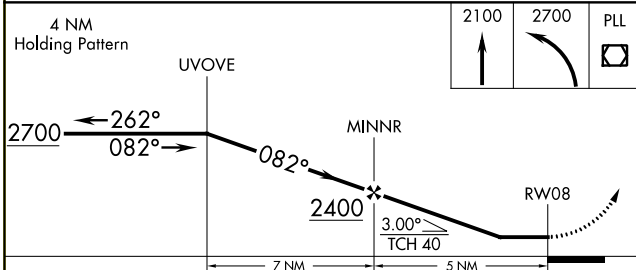
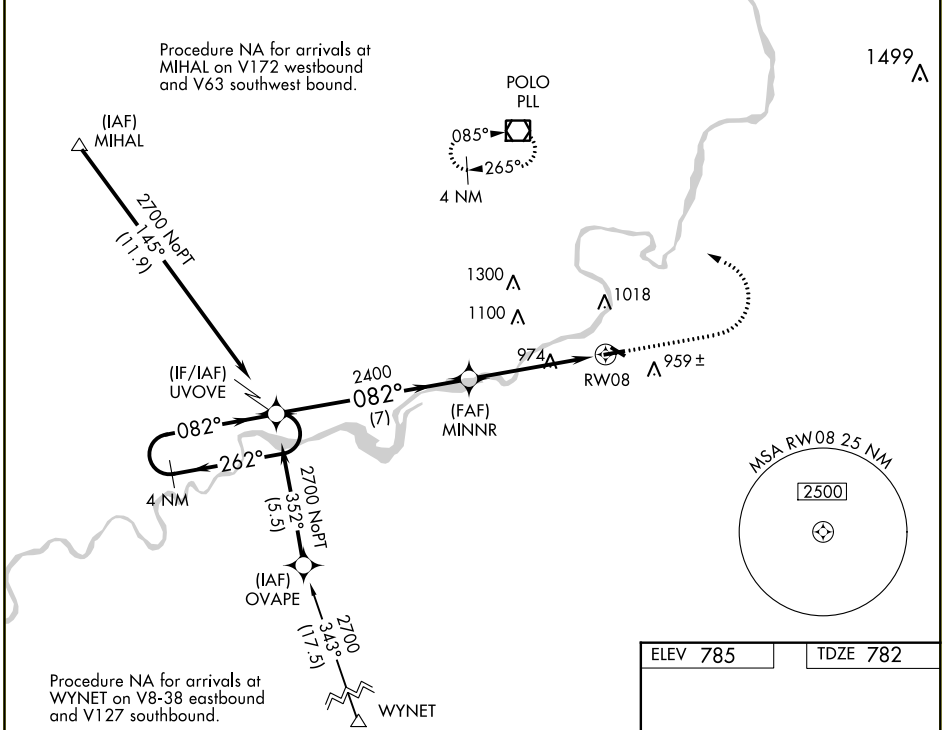


WAAS CH 42821 W08A	APP CRS 082°	Rwy Idg TDZE Apt Elev	3897 782 785
--	------------------------	-----------------------------	---

RNAV (GPS) RWY 8

DIXON MUNI-CHARLES R WALGREEN FLD (C73)

RNP APCH.		MISSED APPROACH: Climb to 2100 then climbing left turn to 2700 direct PLL VOR/DME and hold.	
<p>▼ Rwy 8 helicopter visibility reduction below 3/4 SM NA. When local altimeter setting not received, use Rochelle altimeter setting.</p> <p>▲ NA</p>			
AWOS-AV 118.575	RPJ AWOS-3 125.2	ROCKFORD APP CON 126.0 327.0	UNICOM 123.05 (CTAF) 0



ELEV 785	TDZE 782
----------	----------

3897 X 75, 2803 X 75, 0.3% Up, 082° to RW08

REIL Rwy 8 0
MIRL Rwy 8-26 and 12-30 0

CATEGORY	A	B	C	D
LP MDA	1440-1	658 (700-1)	1440-1 7/8 658 (700-1 7/8)	NA
RNAV MDA	1440-1	658 (700-1)	1440-1 7/8 658 (700-1 7/8)	NA
CIRCLING	1500-1 715 (800-1)	1520-1 735 (800-1)	1520-2 735 (800-2)	NA

EC-3, 09 SEP 2021 to 07 OCT 2021

EC-3, 09 SEP 2021 to 07 OCT 2021