

NDB PLX <b>391</b>	APP CRS <b>156°</b>	Rwy ldg TDZE Apt Elev	<b>3398</b> <b>455</b> <b>461</b>
-----------------------	------------------------	-----------------------------	---

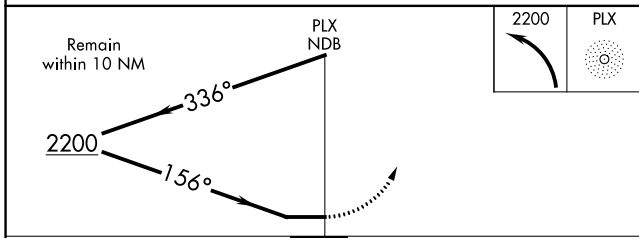
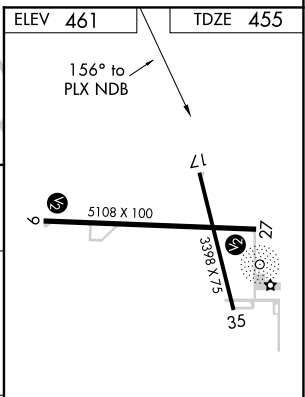
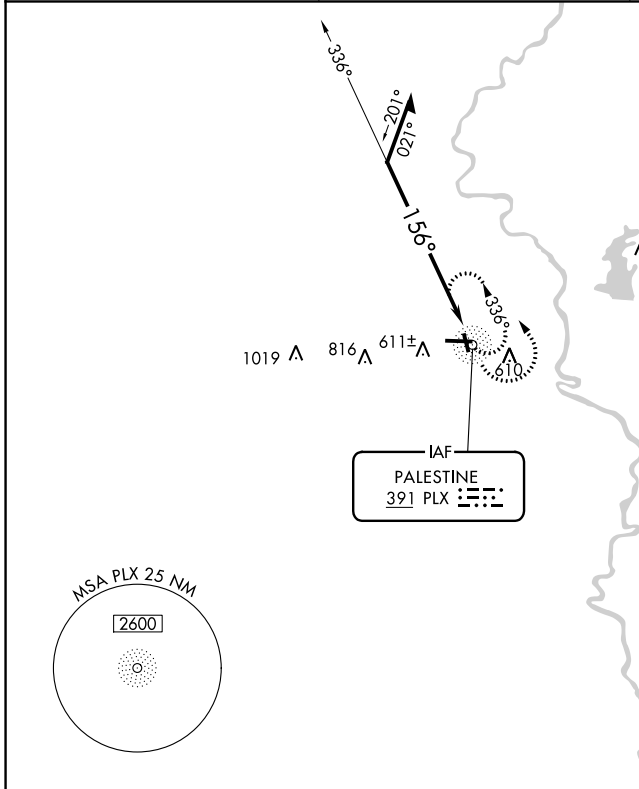
# NDB RWY 17

CRAWFORD COUNTY (RSV)

**⚠** When local altimeter setting not received, use Terre Haute Rgnl altimeter setting and increase all MDA 100 feet; increase S-17 Cat B visibility ¼ mile and Cats C/D visibility ½ mile; increase Circling Cat B visibility ¼ mile and Cats C/D visibility ½ mile. Helicopter visibility reduction below 1 SM NA. Rwy 17 Straight-in and Circling minimums NA at night.

**MISSED APPROACH:**  
Climbing left turn to 2200 in PLX NDB holding pattern.

AWOS-3 <b>120.50</b>	HULMAN APP CON <b>119.25 339.8</b>	UNICOM <b>123.0 (CTAF) 0</b>
-------------------------	---------------------------------------	---------------------------------



CATEGORY	A	B	C	D
S-17	1160-1	705 (700-1)	1160-2	705 (700-2)
<b>C</b> CIRCLING	1160-1	699 (700-1)	1160-2 699 (700-2)	1180-2¼ 719 (800-2¼)

REIL Rwy 9, 17 and 27 **0**  
MIRL Rwy 9-27 and 17-35 **0**

EC-3, 09 SEP 2021 to 07 OCT 2021

EC-3, 09 SEP 2021 to 07 OCT 2021