

WAAS CH 63033 W17A	APP CRS 169°	Rwy Idg TDZE Apt Elev	3398 455 461
--	------------------------	-----------------------------	---

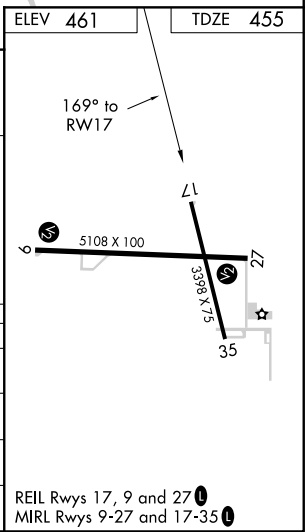
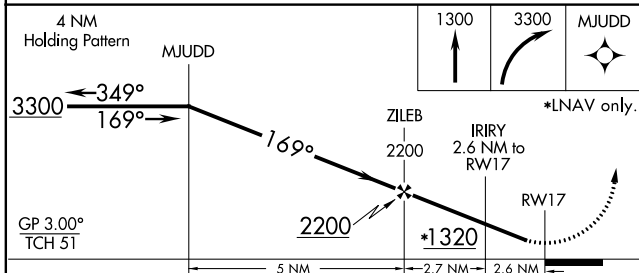
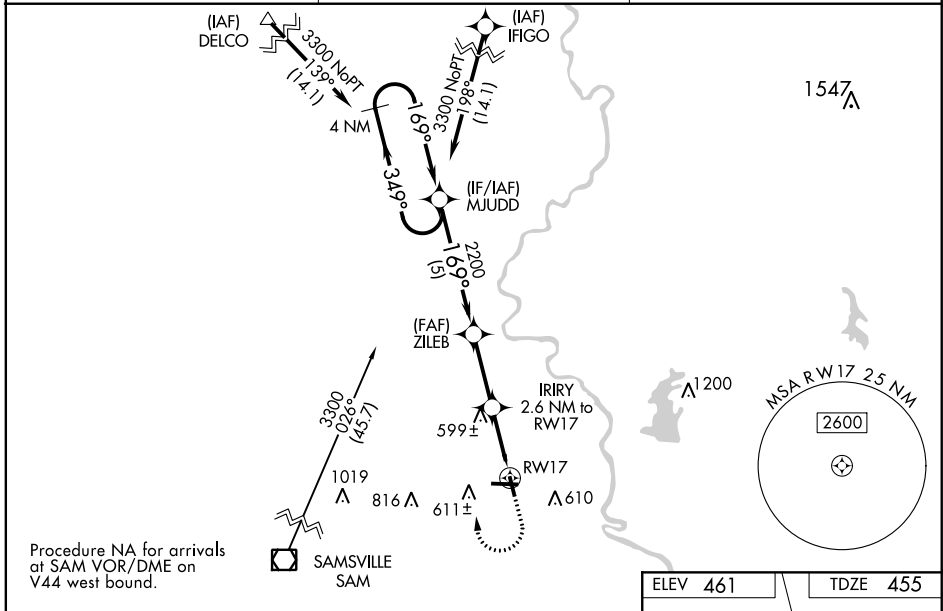
RNAV (GPS) RWY 17

CRAWFORD COUNTY (RSV)

⚠ Baro-VNAV NA when using Terre Haute Rgnl altimeter setting. For uncompensated Baro-VNAV systems, LNAV/VNAV NA below -15°C (5°F) or above 54°C (130°F). DME/DME RNP-0.3 NA. When local altimeter setting not received, use Terre Haute Rgnl altimeter setting and increase all DA 89 feet and all MDA 100 feet; increase LPV all Cats visibility ¼ mile, increase LNAV/VNAV all Cats visibility ⅓ mile, increase LNAV Cat C visibility ¼ mile and increase Circling Cat C visibility ½ mile. Rwy 17 Straight-in and Circling minimums NA at night. Helicopter visibility reduction below 1 SM NA.

MISSED APPROACH: Climb to 300 then climbing right turn to 3300 direct MJUDD and hold.

AWOS-3 120.50	HULMAN APP CON 119.25 339.8	UNICOM 123.0 (CTAF) 0
-------------------------	---------------------------------------	---------------------------------



CATEGORY	A	B	C	D
LPV DA	734-1	279 (300-1)		NA
LNAV/VNAV DA	812-1½	357 (400-1½)		NA
LNAV MDA	860-1	405 (400-1)	860-1½ 405 (400-1½)	NA
C CIRCLING	940-1 479 (500-1)	1080-1 619 (700-1)	1120-1¾ 659 (700-1¾)	NA

EC-3, 09 SEP 2021 to 07 OCT 2021

EC-3, 09 SEP 2021 to 07 OCT 2021