

WAAS CH <b>49109</b> <b>W09A</b>	APP CRS <b>095°</b>	Rwy Idg TDZE <b>461</b> Apt Elev <b>461</b>	<b>5108</b>
--	------------------------	---	-------------

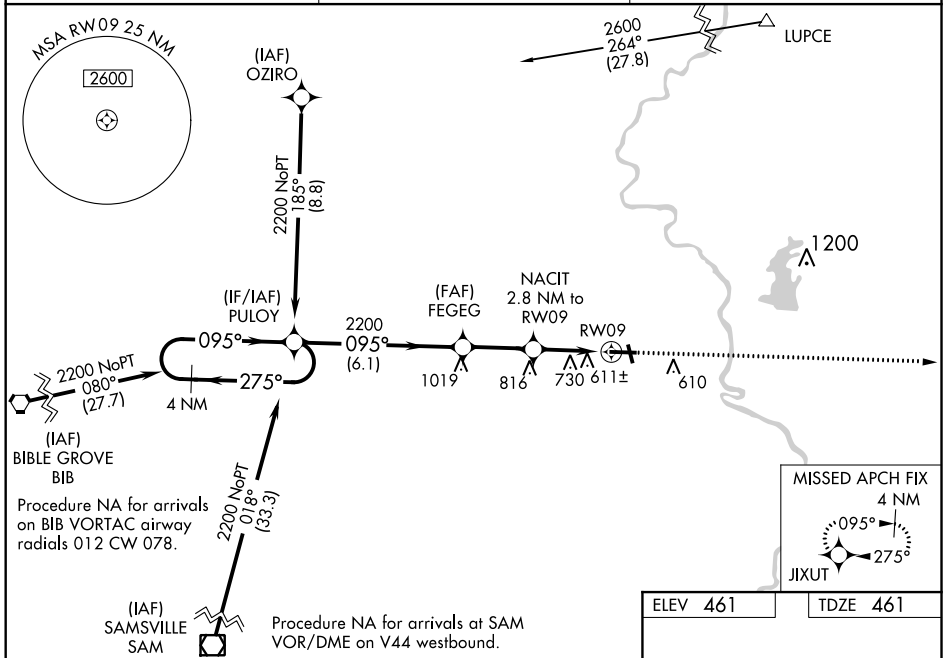
# RNAV (GPS) RWY 9

CRAWFORD COUNTY (RSV)

**⚠** Baro-VNAV NA when using Terre Haute Rgnl altimeter setting. For uncompensated Baro-VNAV systems, LNAV/VNAV NA below -15°C (5°F) or above 54°C (130°F). DME/DME RNP-0.3 NA. When local altimeter setting not received, use Terre Haute Rgnl altimeter setting and increase all DA 89 feet and all MDA 100 feet; increase LPV all Cats visibility ¼ mile, increase LNAV Cats C/D visibility ¼ mile and Circling Cats C/D ½ mile. Helicopter visibility reduction below 1 SM NA. Rwy 9 Straight-in minimums NA at night.

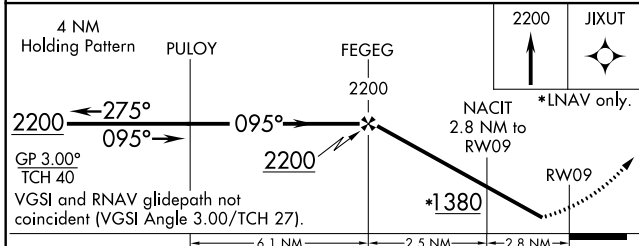
**MISSED APPROACH:**  
Climb to 2200 direct JIXUT and hold.

AWOS-3 <b>120.50</b>	HULMAN APP CON <b>119.25 339.8</b>	UNICOM <b>123.0 (CTAF) 0</b>
-------------------------	---------------------------------------	---------------------------------



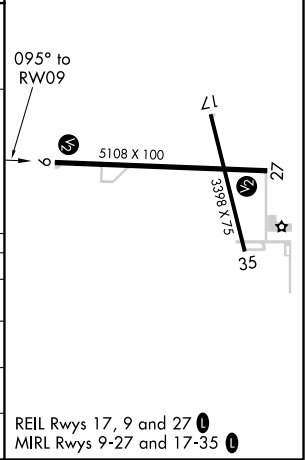
EC-3, 09 SEP 2021 to 07 OCT 2021

EC-3, 09 SEP 2021 to 07 OCT 2021



ELEV 461	TDZE 461
----------	----------

CATEGORY	A	B	C	D
LPV DA	805-1 3/8 344 (400-1 1/8)			
LNAV/VNAV DA	1103-2 1/2 642 (700-2 1/2)			
LNAV MDA	1040-1 579 (600-1)	1040-1 5/8 579 (600-1 1/8)		
<b>C</b> CIRCLING	1040-1 579 (600-1)	1080-1 619 (700-1)	1120-1 3/4 659 (700-1 3/4)	1180-2 1/4 719 (800-2 1/4)



REIL Rwy 17, 9 and 27 **0**  
MRL Rwy 9-27 and 17-35 **0**