

WAAS CH 56517 W12A	APP CRS 121°	Rwy Idg TDZE Apt Elev	6001 1339 1339
--	------------------------	-----------------------------	---

RNAV (GPS) RWY 12

SPENCER MUNI (SPW)

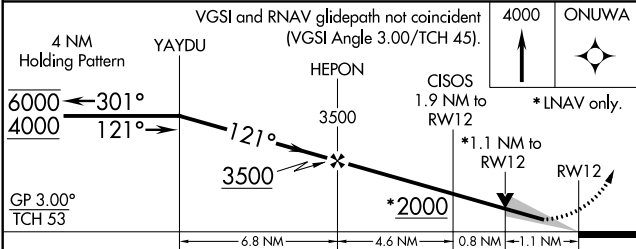
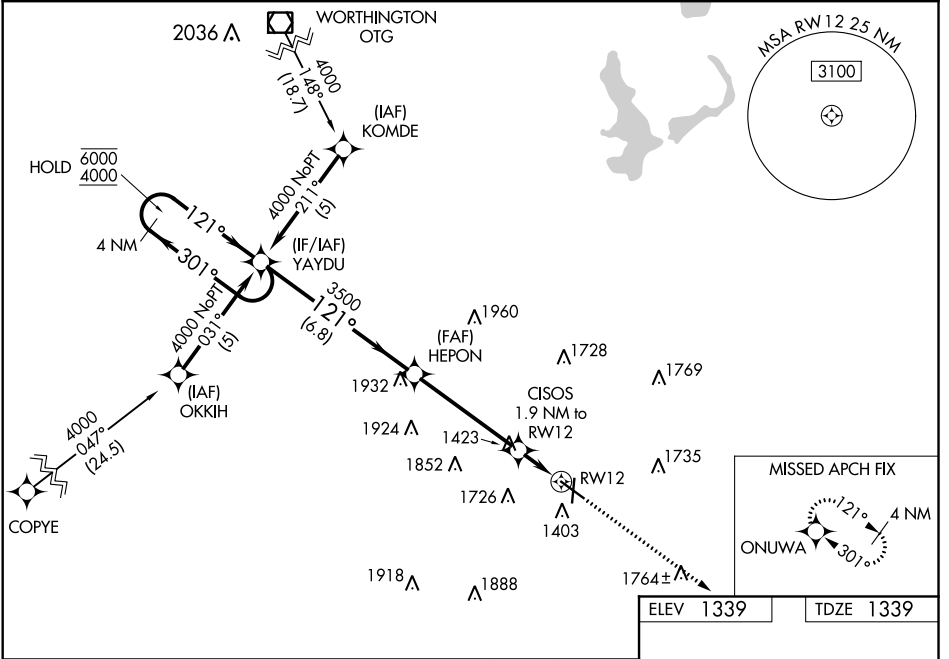
RNP APCH.

▲ For uncompensated Baro-VNAV systems, LNAV/VNAV NA below -17°C or above 54°C. For inop ALS, increase LNAV/VNAV all Cats visibility to 1½ SM and LNAV Cat C/D to 1½ SM.

MALSR

MISSED APPROACH: Climb to 4000 direct ONUWA and hold.

ASOS 126.625	MINNEAPOLIS CENTER 127.75 257.7	UNICOM 123.0 (CTAF)
------------------------	---	-------------------------------



ELEV 1339	TDZE 1339
REIL Rwy 18, 30 and 36	
MRL Rwy 12-30 and 18-36	

CATEGORY	A	B	C	D
LPV DA		1539-½	200 (200-½)	
LNAV/VNAV DA		1734-¾	395 (400-¾)	
LNAV MDA	1740-½	401 (500-½)	1740-¾ 401 (500-¾)	1740-1 401 (500-1)
CIRCLING	1740-1 401 (500-1)	1800-1 461 (500-1)	2100-2¼ 761 (800-2¼)	2100-2½ 761 (800-2½)

NC-3, 09 SEP 2021 to 07 OCT 2021

NC-3, 09 SEP 2021 to 07 OCT 2021