

WAAS CH <b>87133</b> <b>W30A</b>	APP CRS <b>301°</b>	Rwy Idg TDZE <b>1338</b> Apt Elev <b>1339</b>	<b>5501</b>
--	------------------------	---	-------------

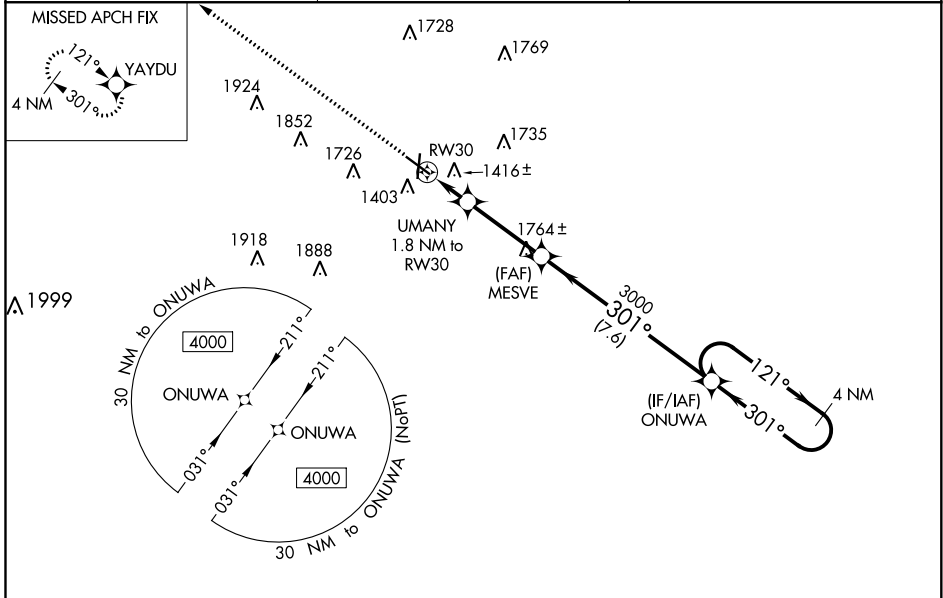
# RNAV (GPS) RWY 30

SPENCER MUNI (SPW)

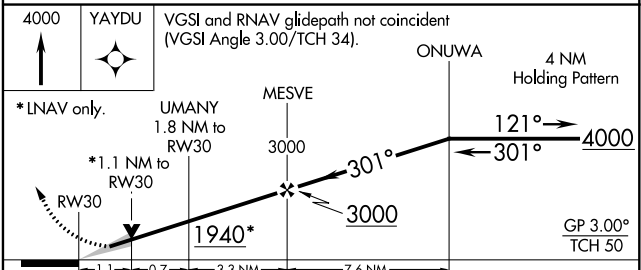
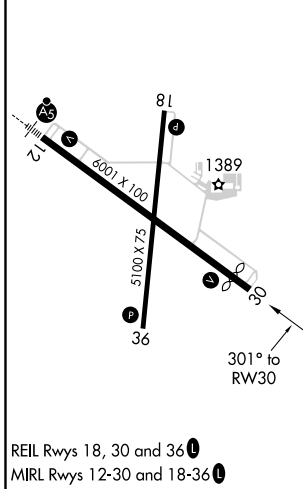
**⚠** Baro-VNAV and VDP NA when using Estherville altimeter setting. For uncompensated Baro-VNAV systems, LNAV/VNAV NA below -20°C (-4°F) or above 54°C (130°F). DME/DME RNP-0.3 NA. When local altimeter setting not received, use Estherville altimeter setting and increase all DA/MDA 60 feet; increase LPV and LNAV/VNAV all Cats, LNAV and Circling Cats C/D visibilities ¼ mile.

MISSED APPROACH:  
Climb to 4000 direct YAYDU and hold.

ASOS <b>126.625</b>	MINNEAPOLIS CENTER <b>127.75 257.7</b>	UNICOM <b>123.0 (CTAF) 0</b>
------------------------	---	---------------------------------



ELEV <b>1339</b>	TDZE <b>1338</b>
------------------	------------------



CATEGORY	A	B	C	D
LPV DA		1588-¾	250 (300-¾)	
LNAV/VNAV DA		1623-⅞	285 (300-⅞)	
LNAV MDA	1720-1	382 (400-1)	1720-1½	382 (400-1½)
<b>C</b> CIRCLING	1740-1 401 (500-1)	1820-1 481 (500-1)	2100-2¼ 761 (800-2¼)	2100-2½ 761 (800-2½)

NC-3, 09 SEP 2021 to 07 OCT 2021

NC-3, 09 SEP 2021 to 07 OCT 2021