

WAAS CH 82233 W36A	APP CRS 001°	Rwy Idg TDZE Apt Elev	5100 1338 1339
--	------------------------	-----------------------------	---

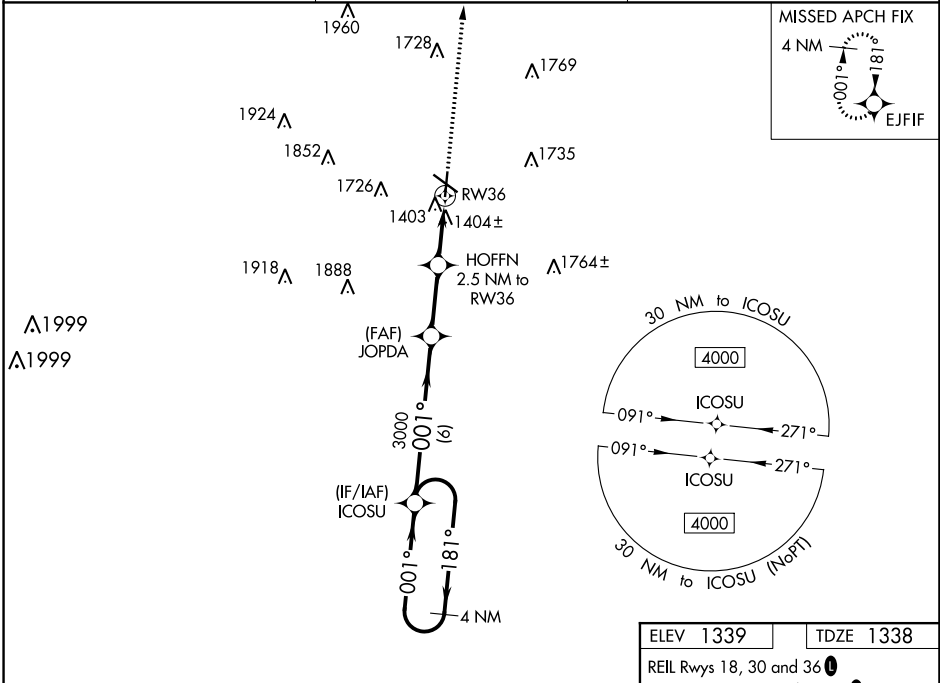
RNAV (GPS) RWY 36

SPENCER MUNI (SPW)

⚠ Baro-VNAV and VDP NA when using Estherville altimeter setting. For uncompensated Baro-VNAV systems, LNAV/VNAV NA below -20°C (-4°F) or above 54°C (130°F). Helicopter visibility reduction below 1 SM NA. DME/DME RNP-0.3 NA. When local altimeter setting not received, use Estherville altimeter setting and increase all DA/MDA 60 feet.

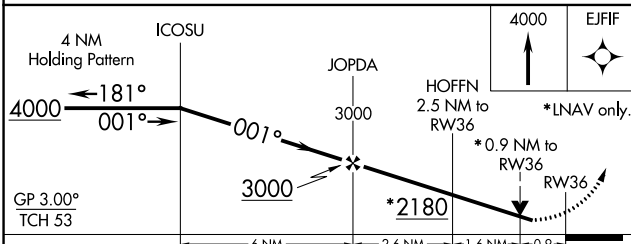
MISSED APPROACH: Climb to 4000 direct EJFIF and hold.

ASOS 126.625	MINNEAPOLIS CENTER 127.75 257.7	UNICOM 123.0 (CTAF) 0
------------------------	---	---------------------------------

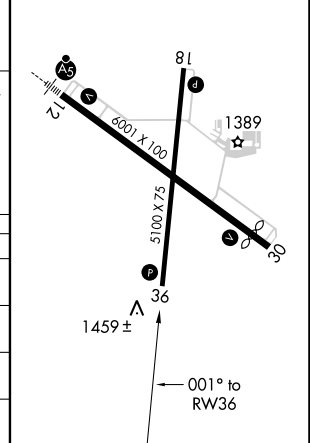


NC-3, 09 SEP 2021 to 07 OCT 2021

NC-3, 09 SEP 2021 to 07 OCT 2021



ELEV 1339	TDZE 1338
REIL Rwy 18, 30 and 36	MIRL Rwy 12-30 and 18-36



CATEGORY	A	B	C	D
LPV DA	1588-1	250 (300-1)		NA
LNAV/VNAV DA	1588-1	250 (300-1)		NA
LNAV MDA	1660-1	322 (400-1)		NA
CIRCLING	1740-1 401 (500-1)	1820-1 481 (500-1)		NA